

## Recombinant MUC16 / CA125 (Ovarian Carcinoma Marker) Antibody

Rabbit Monoclonal Antibody [Clone OCA125/4505R]

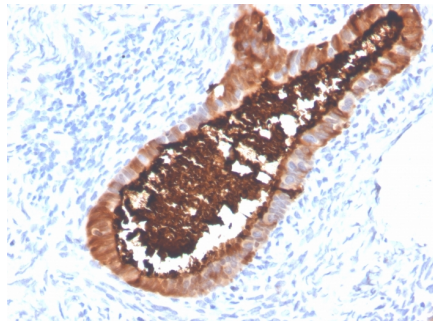
Catalog No	Format	Size
94025-RBM5-P0	Purified Ab with BSA and Azide	200ug/ml
94025-RBM5-P1	Purified Ab with BSA and Azide	200ug/ml
94025-RBM5-P1ABX	Purified Ab WITHOUT BSA and Azide	1.0mg/ml

Applications	Tested Dillution
Immunohistochemistry (IHC)	1-2ug/ml

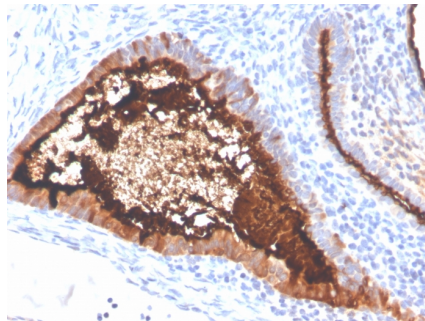
Product Details	
Clone	OCA125/4505R
Gene Name	MUC16
Immunogen	Synthetic peptide corresponding to CA125 residues within aa12201 12300 of CA125 was used as an immunogen.
Host	Rabbit
Clonality	Monoclonal
Isotype / Light Chain	IgG / Kappa
Mol. Weight of Antigen	>2 000kDa
Cellular Localization	Cell membrane, Extracellular space, Secreted
Species Reactivity	Human
Positive Control	MDA-MB-468 cells. Ovarian Cancer.

*\*Optimal dilution for a specific application should be determined.*

### Product Images for Recombinant MUC16 / CA125 (Ovarian Carcinoma Marker) Antibody



Formalin-fixed, paraffin-embedded human ovarian carcinoma stained with MUC16 Recombinant Rabbit Monoclonal Antibody (OCA125/4505R).



Formalin-fixed, paraffin-embedded human ovarian carcinoma stained with MUC16 Recombinant Rabbit Monoclonal Antibody (OCA125/4505R).

### Specificity & Comments

CA125 also known as mucin 16, is a member of the mucin family glycoproteins. CA125 is a component of the ocular surface (including the cornea and conjunctiva), the respiratory tract and the female reproductive tract epithelia. Since CA125 is highly glycosylated it creates a hydrophilic environment that acts as a lubricating barrier against foreign particles and infectious agents on the apical membrane of epithelial cells. CA125 reacts with both normal tissues and neoplasms of fallopian tube, endometrium, endocervix and mesothelioma. It does not react with colon cancer. Normal tissues such as breast, liver, skin, kidney and spleen are also negative. Studies have shown that CA125 reacts with approximately 80% of epithelial ovarian neoplasms of serous, endometrioid, clear cell and undifferentiated types. No reactivity has been shown for mucinous ovarian tumors or in germ cell or hematopoietic tumors. This antibody is a useful aid for classification of a variety of tumors, such as some adenocarcinomas of the colon, breast carcinomas, malignant mesothelioma, uterine adenomatoid tumor, lung bronchoalveolar carcinoma, and ovarian endometrioid and serous carcinomas.

### Research Areas

Immunology, Infectious Disease

### Known Applications & Suggested Dilutions

Immunohistochemistry (Formalin-fixed) (1-2ug/ml for 30 minutes at RT), (Staining of formalin-fixed tissues requires heating tissue sections in 10mM Tris with 1mM EDTA, pH 9.0, for 45 min at 95 °C followed by cooling at RT for 20 minutes), Optimal dilution for a specific application should be determined.

### Limitations and Warranty

This antibody is available for research use only and is not approved for use in diagnosis.

There are no warranties, expressed or implied, which extend beyond this description. Company is not liable for any personal injury or economic loss resulting from this product.

### Supplied As

200ug/ml of Ab purified from Bioreactor Concentrate by Protein A/G. Prepared in 10mM PBS with 0.05% BSA & 0.05% azide. Also available WITHOUT BSA & azide at 1.0mg/ml.

### Storage and Stability

Antibody with azide - store at 2 to 8 °C. Antibody without azide - store at -20 to -80 °C. Antibody is stable for 24 months. Non-hazardous. No MSDS required.