

## Adiponectin (Marker of Obesity) Antibody

Mouse Monoclonal Antibody [Clone ADPN/4256]

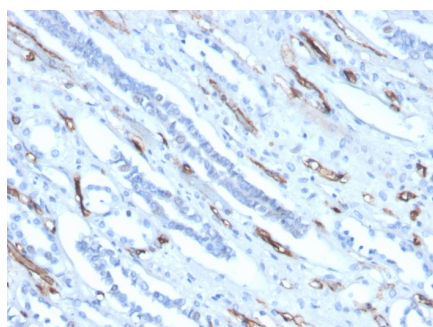
Catalog No	Format	Size
9370-MSM6-P0	Purified Ab with BSA and Azide	200ug/ml
9370-MSM6-P1	Purified Ab with BSA and Azide	200ug/ml
9370-MSM6-P1ABX	Purified Ab WITHOUT BSA and Azide	1.0mg/ml

Applications	Tested Dillution
Immunohistochemistry (IHC)	1-2ug/ml

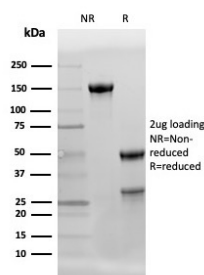
Product Details	
Clone	ADPN/4256
Gene Name	ADIPOQ
Immunogen	Synthetic peptide corresponding to the tail region of the Adiponectin molecule.
Host	Mouse
Clonality	Monoclonal
Isotype / Light Chain	IgG1
Mol. Weight of Antigen	26-30kDa
Cellular Localization	Secreted
Species Reactivity	Human
Positive Control	HeLa cells. Human kidney.

*\*Optimal dilution for a specific application should be determined.*

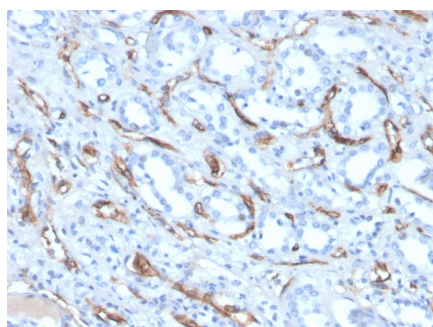
### Product Images for Adiponectin (Marker of Obesity) Antibody



Formalin-fixed, paraffin-embedded human kidney stained with Adiponectin Mouse Monoclonal Antibody (ADPN/4256).



SDS-PAGE Analysis of Purified Adiponectin Mouse Monoclonal Antibody (ADPN/4256) Confirmation of Integrity and Purity of Antibody.



Formalin-fixed, paraffin-embedded human kidney stained with Adiponectin Mouse Monoclonal Antibody (ADPN/4256).

### Specificity & Comments

This MAbs reacts with adiponectin, an adipocytokine. Adipocytokines are hormones produced in adipose tissue. Adiponectin is abundantly present in plasma and has insulin like effect on glucose levels in the blood. Plasma adiponectin levels are low in insulin resistant patients who are obese, have diabetes mellitus type 2 or HIV-lipodystrophy. In women adiponectin levels tend to be higher than in men, which may be due to androgens suppressing adiponectin levels. Furthermore, adiponectin and leptin are both indicated in regulating body weight through direct action on the hypothalamus, influencing appetite. Obese people have low adiponectin levels while levels in anorexia patients are high. Adiponectin acts as ligand for various receptors, two of which have been identified, one probably involved in carbohydrate assimilation, the other in tuning the rate of metabolism. Clone ADPN/4256 is used to detect plasma adiponectin concentrations. Clone ADPN/4256 is also used in a combination ELISA with clone ADPN/4255, acting as the capture antibody.

### Research Areas

Cardiovascular, Complement System, Developmental Biology, Mesenchymal Stem Cell Differentiation

### Known Applications & Suggested Dilutions

ELISA (For coating, use antibody without BSA) | Immunohistochemistry (Formalin-fixed) (1-2ug/ml for 30 minutes at RT), (Staining of formalin-fixed tissues requires heating tissue sections in 10mM Tris with 1mM EDTA, pH 9.0, for 45 min at 95 °C followed by cooling at RT for 20 minutes), Optimal dilution for a specific application should be determined.

### Limitations and Warranty

This antibody is available for research use only and is not approved for use in diagnosis.

There are no warranties, expressed or implied, which extend beyond this description. Company is not liable for any personal injury or economic loss resulting from this product.

### Supplied As

200ug/ml of Ab purified from Bioreactor Concentrate by Protein A/G. Prepared in 10mM PBS with 0.05% BSA & 0.05% azide. Also available WITHOUT BSA & azide at 1.0mg/ml.

### Storage and Stability

Antibody with azide - store at 2 to 8 °C. Antibody without azide - store at -20 to -80 °C. Antibody is stable for 24 months. Non-hazardous. No MSDS required.