

CD22 / BL-CAM (B-Cell Marker) Antibody

Mouse Monoclonal Antibody [Clone MYG13]

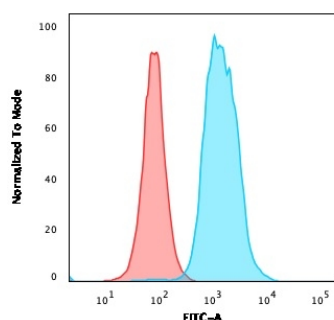
Catalog No	Format	Size
933-MSM2-P0	Purified Ab with BSA and Azide	200ug/ml
933-MSM2-P1	Purified Ab with BSA and Azide	200ug/ml
933-MSM2-P1ABX	Purified Ab WITHOUT BSA and Azide	1.0mg/ml

Applications	Tested Dillution
Flow Cytometry (Flow)	1-2ug/million cells

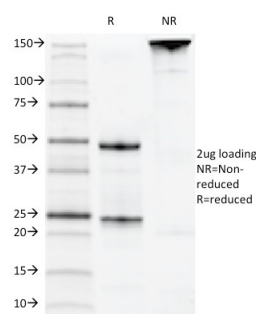
Product Details	
Clone	MYG13
Gene Name	CD22
Immunogen	Human Raji cells
Host	Mouse
Clonality	Monoclonal
Isotype / Light Chain	IgG1 / Kappa
Mol. Weight of Antigen	130-140kDa
Cellular Localization	Cell membrane
Species Reactivity	Human, Mouse, Rat
Positive Control	Daudi, IM9, JY25 and human peripheral blood lymphocytes. Human tonsil and lymphocytes., Raji, Ramos

**Optimal dilution for a specific application should be determined.*

Product Images for CD22 / BL-CAM (B-Cell Marker) Antibody



Flow Cytometric Analysis of Ramos cells using CD22 Mouse Monoclonal Antibody (MYG13) followed by goat anti-Mouse IgG-CF488 (Blue); Isotype Control (Red).



SDS-PAGE Analysis of Purified CD22 Mouse Monoclonal Antibody (MYG13). Confirmation of Integrity and Purity of Antibody.

Specificity & Comments

Recognizes a protein of 130-140kDa, identified as CD22 (also known as BL-CAM). CD22 expression is restricted to normal and neoplastic B cells and is absent from other haemopoietic cell types. In B-cell ontogeny, CD22 is first expressed in the cytoplasm of pro-B and pre-B cells, and on the surface as B cells mature to become IgD+. It is not expressed by plasma cells, CD22 is found highly expressed in follicular mantle and marginal zone B-cells, and while germinal center B-cells are relatively weak. CD22 is a member of the immunoglobulin superfamily and serves as an adhesion receptor for sialic acid-bearing ligands expressed on erythrocytes and all leukocyte classes. It also associates with tyrosine kinases and play a role in signal transduction and B-cell activation.

Research Areas

B Cell Markers, Cardiovascular, Dendritic Cell Marker, Hematopoietic Stem Cells, Immunology

Known Applications & Suggested Dilutions

Flow Cytometry (1-2ug/million cells), Optimal dilution for a specific application should be determined.

Limitations and Warranty

This antibody is available for research use only and is not approved for use in diagnosis.

There are no warranties, expressed or implied, which extend beyond this description. Company is not liable for any personal injury or economic loss resulting from this product.

Supplied As

200ug/ml of Ab Purified from Bioreactor Concentrate by Protein A/G. Prepared in 10mM PBS with 0.05% BSA & 0.05% azide. Also available WITHOUT BSA & azide at 1.0mg/ml.

Storage and Stability

Antibody with azide - store at 2 to 8°C. Antibody without azide - store at -20 to -80°C. Antibody is stable for 24 months. Non-hazardous. No MSDS required.