

Recombinant CD19 (B-Lymphocyte Marker) Antibody

Mouse Monoclonal Antibody [Clone rCD19/4591]

Catalog No	Format	Size
930-MSM11-P0	Purified Ab with BSA and Azide at 200ug/ml	20 ug
930-MSM11-P1	Purified Ab with BSA and Azide at 200ug/ml	100 ug
930-MSM11-P1ABX	Purified Ab WITHOUT BSA and Azide at 1.0mg/ml	100 ug

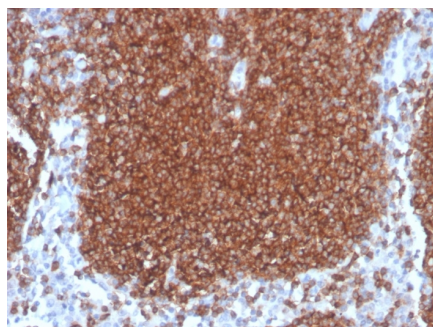
Applications	Tested Dillution	Note
Immunohistochemistry (IHC)	1-2ug/ml	30 min at RT. Staining of formalin-fixed tissues requires heating tissue sections in 10mM Tris with 1mM EDTA, pH 9.0, for 45 min at 95°C followed by cooling at RT for 20 minutes
Western Blot (WB)	2-4ug/ml	

Product Details

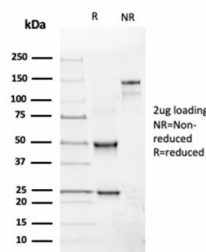
Clone	rCD19/4591
Gene Name	CD19
Immunogen	Synthetic peptide corresponding to CD19 residues within aa456-556 of CD19
Host	Mouse
Clonality	Monoclonal
Isotype / Light Chain	IgG2a / Kappa
Mol. Weight of Antigen	95kDa
Cellular Localization	Cell membrane, Membrane raft
Species Reactivity	Human
Positive Control	Human tonsil, lymph node or spleen. Raji.

*Optimal dilution for a specific application should be determined.

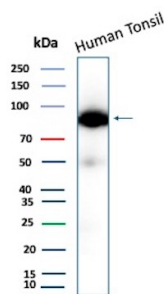
Product Images for Recombinant CD19 (B-Lymphocyte Marker) Antibody



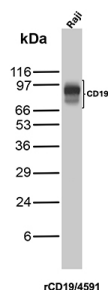
Formalin-fixed, paraffin-embedded human lymph node stained with CD19 Recombinant Mouse Monoclonal Antibody (rCD19/4591).



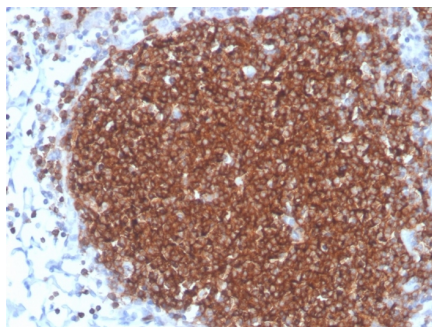
SDS-PAGE Analysis of Purified CD19 Recombinant Mouse Monoclonal Antibody (rCD19/4591). Confirmation of Integrity and Purity of Antibody



Western blot analysis of Human Tonsil tissue lysates using CD19 Recombinant Mouse Monoclonal Antibody (rCD19/4591).



Western blot analysis of Raji cell lysate using CD19 Recombinant Mouse Monoclonal Antibody (rCD19/4591).



Formalin-fixed, paraffin-embedded human lymph node stained with CD19 Recombinant Mouse Monoclonal Antibody (rCD19/4591).

Specificity & Comments

CD19 is a transmembrane glycoprotein that contains two extracellular immunoglobulin-like domains. CD19 is present in both benign and malignant B-cells and is considered to be the most reliable surface marker of this lineage over a wide range of maturational stages. In normal lymphoid tissue, CD19 is observed in germinal centers, in mantle zone cells, and in scattered cells of the inter-follicular areas. Anti-CD19 exhibits an overall immunoreactivity pattern similar to those of the antibodies against CD20 and CD22. However, in contrast to CD20, expression of CD19 is continuous throughout B-cell development and through terminal differentiation of B-cells into plasma cells. Anti-CD19 positivity is seen in the vast majority of B-cell neoplasms commonly at a lower intensity than normal B-cell counterparts. Plasma cell neoplasms are nearly always negative, as are T-cell neoplasms.

Limitations and Warranty

This antibody is available for research use only and is not approved for use in diagnosis. There are no warranties, expressed or implied, which extend beyond this description. Company is not liable for any personal injury or economic loss resulting from this product.

Supplied As

200ug/ml of Ab purified from Bioreactor Concentrate by Protein A/G. Prepared in 10mM PBS with 0.05% BSA & 0.05% azide. Also available WITHOUT BSA & azide at 1.0mg/ml.

Storage and Stability

Antibody with azide - store at 2 to 8 °C. Antibody without azide - store at -20 to -80 °C. Antibody is stable for 24 months. Non-hazardous. No MSDS required.

Research Areas

B Cell Markers, Cardiovascular, Complement System, Hematopoietic Stem Cells, Immune checkpoint, Immunology, Infectious Disease, Mesenchymal Stem Cell Differentiation, Signal Transduction