

Recombinant CD14 (Monocyte / Macrophage Marker) Antibody

Rabbit Monoclonal Antibody [Clone LPSR/4180R]

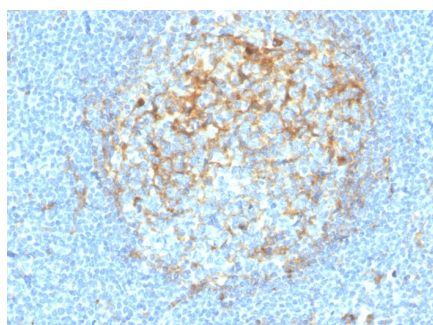
Catalog No	Format	Size
929-RBM14-P0	Purified Ab with BSA and Azide	200ug/ml
929-RBM14-P1	Purified Ab with BSA and Azide	200ug/ml
929-RBM14-P1ABX	Purified Ab WITHOUT BSA and Azide	1.0mg/ml

Applications	Tested Dillution
Immunohistochemistry (IHC)	1-2ug/ml

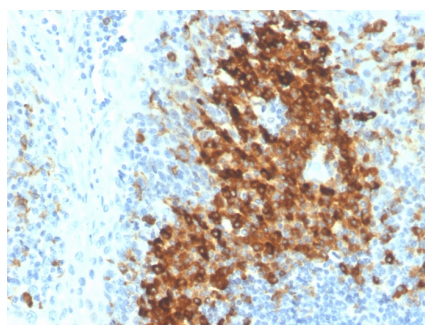
Product Details	
Clone	LPSR/4180R
Gene Name	CD14
Immunogen	Synthetic peptide corresponding to residues within aa 1-100 of CD14 was used as an immunogen.
Host	Rabbit
Clonality	Monoclonal
Isotype / Light Chain	IgG / Kappa
Mol. Weight of Antigen	40kDa
Cellular Localization	Cell membrane, Golgi apparatus, Membrane raft, Secreted
Species Reactivity	Human
Positive Control	Human lymph node or tonsil.

**Optimal dilution for a specific application should be determined.*

Product Images for Recombinant CD14 (Monocyte / Macrophage Marker) Antibody



Formalin-fixed, paraffin-embedded human tonsil stained with CD14 Rabbit Recombinant Monoclonal Antibody (LPSR/4180R).



Formalin-fixed, paraffin-embedded human tonsil stained with CD14 Rabbit Recombinant Monoclonal Antibody (LPSR/4180R).

Specificity & Comments

CD14 is receptor for endotoxin and apoptotic cells. It is expressed by monocytes/histiocytes, Langerhans' cells, follicular dendritic reticulum cells, neutrophils (weakly), and endothelial cells of the liver sinusoids. CD14 is detected in myeloid leukemias with monoblastic/monocytic differentiation, and in histiocytic neoplasms like histiocytic lymphoma, Langerhans' cell histiocytosis and giant cell tumor. In cultures, a subpopulation of Kaposi sarcoma cells express CD14. In differential diagnosis, CD14 is more specific than CD68 in the identification of monocytes/histiocytes and associated neoplasias.

Research Areas

Cardiovascular, Immunology, B Cell Markers, Dendritic Cell Marker, Hematopoietic Stem Cells, Infectious Disease, MAPK Signaling, Mesenchymal Stem Cell Differentiation

Known Applications & Suggested Dilutions

Immunohistochemistry (Formalin-fixed) (1-2ug/ml for 30 minutes at RT), (Staining of formalin-fixed tissues is enhanced by boiling tissue sections in 10mM Tris with 1mM EDTA, pH 9.0 for 10-20 min followed by cooling at RT for 20 minutes), Optimal dilution for a specific application should be determined.

Limitations and Warranty

This antibody is available for research use only and is not approved for use in diagnosis.

There are no warranties, expressed or implied, which extend beyond this description. Company is not liable for any personal injury or economic loss resulting from this product.

Supplied As

200ug/ml of Ab purified from Bioreactor Concentrate by Protein A/G. Prepared in 10mM PBS with 0.05% BSA & 0.05% azide. Also available WITHOUT BSA & azide at 1.0mg/ml.

Storage and Stability

Antibody with azide - store at 2 to 8 °C. Antibody without azide - store at -20 to -80 °C. Antibody is stable for 24 months. Non-hazardous. No MSDS required.