

Recombinant L-PLUNC Antibody

Rabbit Monoclonal Antibody [Clone LPLUNC1/7059R]

Catalog No	Format	Size
92747-RBM2-P0	Purified Ab with BSA and Azide at 200ug/ml	20 ug
92747-RBM2-P1	Purified Ab with BSA and Azide at 200ug/ml	100 ug
92747-RBM2-P1ABX	Purified Ab WITHOUT BSA and Azide at 1.0mg/ml	100 ug

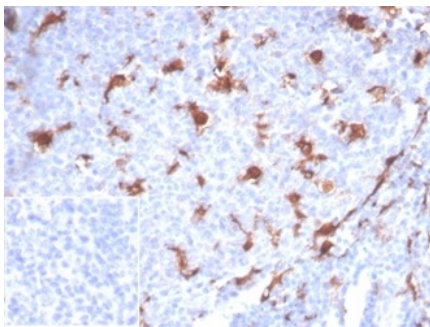
Applications	Tested Dillution	Note
Immunohistochemistry (IHC)	1-2ug/ml	30 min at RT. Staining of formalin-fixed tissues requires heating tissue sections in 10mM Tris with 1mM EDTA, pH 9.0, for 45 min at 95°C followed by cooling at RT for 20 minutes
Western Blot (WB)	2-4ug/ml	

Product Details

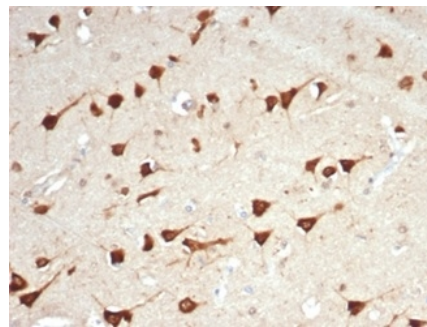
Clone	LPLUNC1/7059R
Gene Name	BPIFB1
Immunogen	Recombinant full-length human BPIFB1 protein
Host	Rabbit
Clonality	Monoclonal
Isotype / Light Chain	IgG / Kappa
Mol. Weight of Antigen	25kDa
Cellular Localization	Secreted
Species Reactivity	Human
Positive Control	Human lung or tonsil. HeLa cells.

**Optimal dilution for a specific application should be determined.*

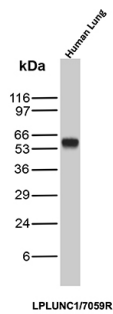
Product Images for Recombinant L-PLUNC Antibody



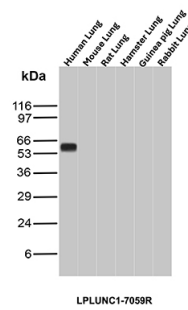
Formalin-fixed, paraffin-embedded human tonsil stained with L-PLUNC Recombinant Rabbit Monoclonal Antibody (LPLUNC1/7059R). Inset: PBS instead of primary antibody; secondary only negative control.



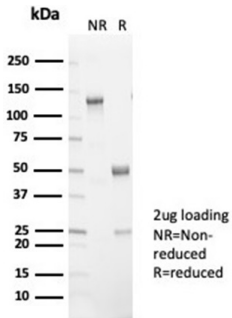
Formalin-fixed, paraffin-embedded human brain stained with L-PLUNC Recombinant Rabbit Monoclonal Antibody (LPLUNC1/7059R). HIER: Tris/EDTA, pH9.0, 45min. 2°C: HRP-polymer, 30min. DAB, 5min.



Western Blot Analysis of Human Lung lysate using L-PLUNC Recombinant Rabbit Monoclonal Antibody (LPLUNC1/7059R).



Western Blot Analysis of Lung tissue lysates of different species using L-PLUNC Recombinant Rabbit Monoclonal Antibody (LPLUNC1/7059R).



SDS-PAGE Analysis of Purified L-PLUNC Recombinant Rabbit Monoclonal (LPLUNC1/7059R). Confirmation of Purity and Integrity of Antibody.

Specificity & Comments

The upper respiratory tract is the main place of entry for pathogens to invade the body, and early recognition of bacterial products in this region is crucial for host defense. Palate lung nasal epithelial clone PLUNC (or LUNX) is an airway specific secretory protein that is expressed in epithelial tissues and submucosal glands of the oral cavity and upper respiratory tract of humans, mice, rats and cows. PLUNC binds to lipopolysaccharide (LPS) in nasal lavage fluid (NLF) which points to its role in the inflammatory response of the upper airways after exposure to irritants. Decreased levels of PLUNC occur in the NLF of smokers and people who have been exposed to reactive epoxy chemicals, indicating that long-term exposure to airway irritants impairs the production of PLUNC in the upper respiratory tract. Abnormal expression of PLUNC may influence susceptibility to nasopharyngeal carcinoma in the Chinese population.

Limitations and Warranty

This antibody is available for research use only and is not approved for use in diagnosis. There are no warranties, expressed or implied, which extend beyond this description. Company is not liable for any personal injury or economic loss resulting from this product.

Supplied As

200ug/ml of Ab purified from Bioreactor Concentrate by Protein A/G. Prepared in 10mM PBS with 0.05% BSA & 0.05% azide. Also available WITHOUT BSA & azide at 1.0mg/ml.

Storage and Stability

Antibody with azide - store at 2 to 8 °C. Antibody without azide - store at -20 to -80 °C. Antibody is stable for 24 months. Non-hazardous. No MSDS required.

Research Areas

Immunology