

L-PLUNC Antibody

Mouse Monoclonal Antibody [Clone LPLUNC1/3206]

| Catalog No | Format | Size |
|------------------|---|--------|
| 92747-MSM1-P0 | Purified Ab with BSA and Azide at 200ug/ml | 20 ug |
| 92747-MSM1-P1 | Purified Ab with BSA and Azide at 200ug/ml | 100 ug |
| 92747-MSM1-P1ABX | Purified Ab WITHOUT BSA and Azide at 1.0mg/ml | 100 ug |

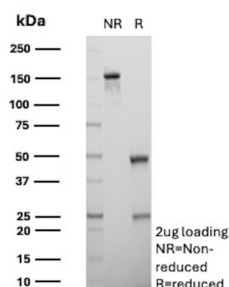
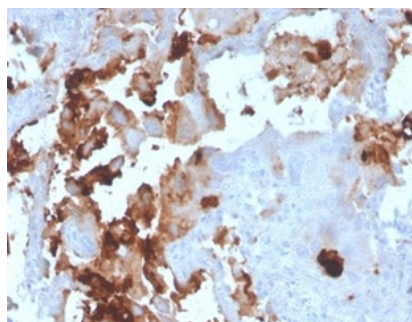
| Applications | Tested Dillution | Note |
|----------------------------|------------------|---|
| Immunohistochemistry (IHC) | 1-2ug/ml | 30 min at RT. Staining of formalin-fixed tissues requires heating tissue sections in 10mM Tris with 1mM EDTA, pH 9.0, for 45 min at 95°C followed by cooling at RT for 20 minutes |
| Western Blot (WB) | 2-4ug/ml | |

Product Details

| | |
|-------------------------------|--|
| Clone | LPLUNC1/3206 |
| Gene Name | BPIFB1 |
| Immunogen | Recombinant full-length human BPIFB1 protein |
| Host | Mouse |
| Clonality | Monoclonal |
| Isotype / Light Chain | IgG1 / Kappa |
| Mol. Weight of Antigen | 25kDa |
| Cellular Localization | Secreted |
| Species Reactivity | Human |
| Positive Control | Human lung tissue. HeLa cells. |

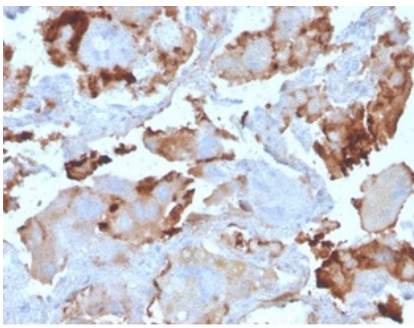
*Optimal dilution for a specific application should be determined.

Product Images for L-PLUNC Antibody



Formalin-fixed, paraffin-embedded human breast carcinoma stained with L-PLUNC Mouse Monoclonal Antibody (LPLUNC1/3206). HIER: Tris/EDTA, pH9.0, 45min. 2°C: HRP-polymer, 30min. DAB, 5min.

SDS-PAGE Analysis of Purified LPLUNC1 Mouse Monoclonal Antibody (LPLUNC1/3206). Confirmation of Purity and Integrity of Antibody.



Formalin-fixed, paraffin-embedded human breast carcinoma stained with L-PLUNC Mouse Monoclonal Antibody (LPLUNC1/3206). HIER: Tris/EDTA, pH9.0, 45min. 2°C: HRP-polymer, 30min. DAB, 5min.

Specificity & Comments

The upper respiratory tract is the main place of entry for pathogens to invade the body, and early recognition of bacterial products in this region is crucial for host defense. Palate lung nasal epithelial clone PLUNC (or LUNX) is an airway specific secretory protein that is expressed in epithelial tissues and submucosal glands of the oral cavity and upper respiratory tract of humans, mice, rats and cows. PLUNC binds to lipopolysaccharide (LPS) in nasal lavage fluid (NLF) which points to its role in the inflammatory response of the upper airways after exposure to irritants. Decreased levels of PLUNC occur in the NLF of smokers and people who have been exposed to reactive epoxy chemicals, indicating that long-term exposure to airway irritants impairs the production of PLUNC in the upper respiratory tract. Abnormal expression of PLUNC may influence susceptibility to nasopharyngeal carcinoma in the Chinese population.

Limitations and Warranty

This antibody is available for research use only and is not approved for use in diagnosis. There are no warranties, expressed or implied, which extend beyond this description. Company is not liable for any personal injury or economic loss resulting from this product.

Supplied As

200ug/ml of Ab purified from Bioreactor Concentrate by Protein A/G. Prepared in 10mM PBS with 0.05% BSA & 0.05% azide. Also available WITHOUT BSA & azide at 1.0mg/ml.

Storage and Stability

Antibody with azide - store at 2 to 8 °C. Antibody without azide - store at -20 to -80 °C. Antibody is stable for 24 months. Non-hazardous. No MSDS required.

Research Areas

Immunology