

Recombinant CD8A (Cytotoxic-& Suppressor T-Cell Marker) Antibody

Rabbit Monoclonal Antibody [Clone CD8/3892R]

| Catalog No | Format | Size |
|-----------------|--|--------|
| 925-RBM17-P0 | Purified Ab with BSA and Azide at 200ug/ml | 20 ug |
| 925-RBM17-P1 | Purified Ab with BSA and Azide at 200ug/ml | 100 ug |
| 925-RBM17-P1ABX | Purified Ab WITHOUT BSA or Azide at 1.0mg/ml | 100 ug |

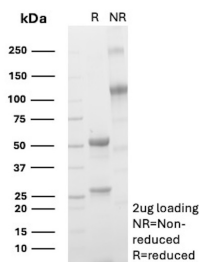
| Applications | Tested Dillution | Note |
|-------------------|------------------|------|
| Western Blot (WB) | 2-4ug/ml | |

Product Details

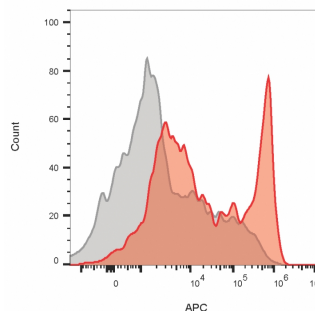
| | |
|-------------------------------|--|
| Clone | CD8/3892R |
| Immunogen | Recombinant full-length human CD8a protein |
| Host | Rabbit |
| Clonality | Monoclonal |
| Isotype / Light Chain | IgG / Kappa |
| Mol. Weight of Antigen | 25.73kDa |
| Cellular Localization | Cell membrane, Secreted |
| Species Reactivity | Human |
| Positive Control | HuT78 or hPBL. Tonsil |

*Optimal dilution for a specific application should be determined.

Product Images for Recombinant CD8A (Cytotoxic-& Suppressor T-Cell Marker) Antibody



SDS-PAGE Analysis of Purified CD8a Recombinant Rabbit Monoclonal Antibody (CD8/3892R). Confirmation of Purity and Integrity of Antibody.



Flow cytometry of lymphocyte gated PBMCs stained with CD4 monoclonal antibody (RIV7) (red) or isotype control (gray) followed bygoat anti-rabbit CF640R.

Specificity & Comments

This MAb is specific for the 32kDa alpha chain of human CD8, known as CD8a or CD8 alpha. CD8 is a cell surface receptor expressed either as a heterodimer with the CD8 beta chain (CD8 alpha/beta) or as a homodimer (CD8 alpha/alpha). A majority of thymocytes and a subpopulation of mature T cells and NK cells express CD8a. CD8 binds to MHC class 1 and through its association with protein tyrosine kinase p56lck plays a role in T cell development and activation of mature T cells. For mature T-cells, CD4 and CD8 are mutually exclusive, so anti-CD8, generally used in conjunction with anti-CD4. It is a useful marker for distinguishing helper/inducer T-lymphocytes, and most peripheral T-cell lymphomas are CD4+/CD8-. Anaplastic large cell lymphoma is usually CD4+ and CD8-, and in T-lymphoblastic lymphoma/leukemia, CD4 and CD8 are often co-expressed. CD8 is also found in littoral cell angioma of the spleen

Supplied As

200ug/ml of Ab produced in a mammalian-based expression system. Prepared in 10mM PBS with 0.05% BSA & 0.05% azide. Also available WITHOUT BSA & azide at 1.0mg/ml.

Storage and Stability

Antibody with azide - store at 2 to 8 °C. Antibody without azide - store at -20 to -80 °C. Antibody is stable for 24 months. Non-hazardous. No MSDS required.

Limitations and Warranty

This antibody is available for research use only and is not approved for use in diagnosis. There are no warranties, expressed or implied, which extend beyond this description. Company is not liable for any personal injury or economic loss resulting from this product.
