

## CD8A (Cytotoxic / Suppressor T-Cell Marker) Antibody

Mouse Monoclonal Antibody [Clone RIV11]

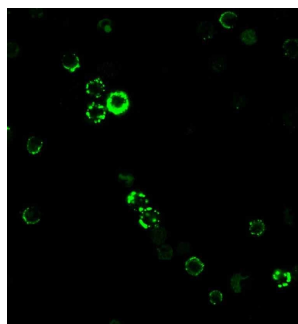
Catalog No	Format	Size
925-MSM7-P0	Purified Ab with BSA and Azide	200ug/ml
925-MSM7-P1	Purified Ab with BSA and Azide	200ug/ml
925-MSM7-P1ABX	Purified Ab WITHOUT BSA and Azide	1.0mg/ml

Applications	Tested Dillution
Flow Cytometry (Flow)	1-2ug/million cells
Immunofluorescence (IF)	1-3ug/ml

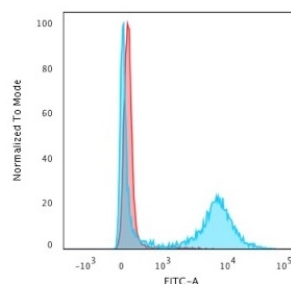
Product Details	
Clone	RIV11
Gene Name	CD8A
Immunogen	Recombinant full-length human CD8A protein
Host	Mouse
Clonality	Monoclonal
Isotype / Light Chain	IgG1 / Kappa
Mol. Weight of Antigen	32kDa
Cellular Localization	Cell membrane, Secreted
Species Reactivity	Human
Positive Control	HuT78 or hPBL. Human tonsil.

*\*Optimal dilution for a specific application should be determined.*

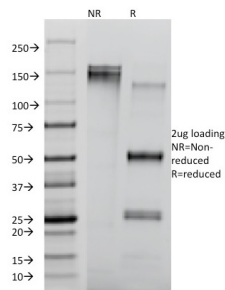
### Product Images for CD8A (Cytotoxic / Suppressor T-Cell Marker) Antibody



Immunofluorescence staining of human PBMC cells. CD8A Mouse Monoclonal Antibody (RIV11) followed by goat anti-mouse IgG-CF488 (green).



Flow Cytometric Analysis of human PBMC cells. CD8A Mouse Monoclonal Antibody (RIV11) followed by goat anti-mouse IgG-CF488 (blue); unstained cells (red).



SDS-PAGE Analysis of Purified CD8A Mouse Monoclonal Antibody (RIV11).  
Confirmation of Integrity and Purity of Antibody.

### Specificity & Comments

Cluster of Differentiation 8 (CD8) is a disulphide-linked heterodimer consisting of the unrelated  $\alpha$  and  $\beta$  subunits. Each subunit is a glycoprotein composed of a single extracellular Ig-like domain, a polypeptide linker, a transmembrane part and a short cytoplasmic tail. On T cells, CD8 is the coreceptor for the T cell receptor (TCR), and these two distinct structures recognize the Antigen Major Histocompatibility Complex (MHC). Specifically, the Ig-like domain of CD8 $\beta$  interacts with the  $\alpha$ 3-domain of the MHC class I molecule. CD8 ensures specificity of the TCR antigen interaction, prolongs the contact between the T cell and the antigen presenting cell, and the  $\alpha$  chain recruits the tyrosine kinase Lck, which is essential for T cell activation.

### Research Areas

Cardiovascular, Immunology, Dendritic Cell Marker, Hematopoietic Stem Cells, PD-1 blockade immunotherapy

### Known Applications & Suggested Dilutions

Flow Cytometry (1-2ug/million cells) | ,Immunofluorescence (1-2ug/ml) | ,Optimal dilution for a specific application should be determined.

### Limitations and Warranty

This antibody is available for research use only and is not approved for use in diagnosis.

There are no warranties, expressed or implied, which extend beyond this description. Company is not liable for any personal injury or economic loss resulting from this product.

### Supplied As

200ug/ml of Ab purified from Bioreactor Concentrate by Protein A/G. Prepared in 10mM PBS with 0.05% BSA & 0.05% azide. Also available WITHOUT BSA & azide at 1.0mg/ml.

### Storage and Stability

Antibody with azide - store at 2 to 8 °C. Antibody without azide - store at -20 to -80 °C. Antibody is stable for 24 months. Non-hazardous. No MSDS required.