

## Recombinant CD7 (T-Cell Leukemia Marker) Antibody

Rabbit Monoclonal Antibody [Clone CD7/6388R]

Catalog No	Format	Size
924-RBM10-P0	Purified Ab with BSA and Azide at 200ug/ml	20 ug
924-RBM10-P1	Purified Ab with BSA and Azide at 200ug/ml	100 ug
924-RBM10-P1ABX	Purified Ab WITHOUT BSA and Azide at 1.0mg/ml	100 ug

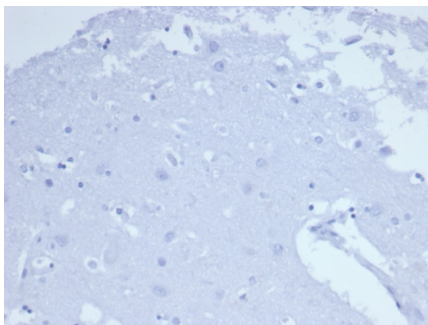
Applications	Tested Dillution	Note
Immunohistochemistry (IHC)	1-2ug/ml	30 min at RT. Staining of formalin-fixed tissues requires heating tissue sections in 10mM Tris with 1mM EDTA, pH 9.0, for 45 min at 95°C followed by cooling at RT for 20 minutes
Western Blot (WB)	2-4ug/ml	

### Product Details

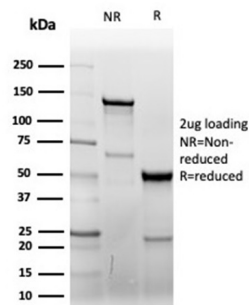
<b>Clone</b>	CD7/6388R
<b>Gene Name</b>	CD7
<b>Immunogen</b>	Recombinant fragment (around aa 72-175) of human CD7 protein (exact sequence is proprietary)
<b>Host</b>	Rabbit
<b>Clonality</b>	Monoclonal
<b>Isotype / Light Chain</b>	IgG / Kappa
<b>Mol. Weight of Antigen</b>	40kDa
<b>Cellular Localization</b>	Membrane
<b>Species Reactivity</b>	Human
<b>Positive Control</b>	HePG-2 or Jurkat cells. Human lymph node or tonsil.

\*Optimal dilution for a specific application should be determined.

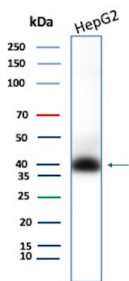
### Product Images for Recombinant CD7 (T-Cell Leukemia Marker) Antibody



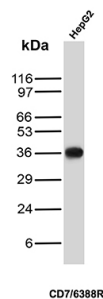
IHC analysis of formalin-fixed, paraffin-embedded human brain. Negative tissue control using CD7/6388R at 2ug/ml in PBS for 30min RT. HIER: Tris/EDTA, pH9.0, 45min. 2°C: HRP-polymer, 30min. DAB, 5min.



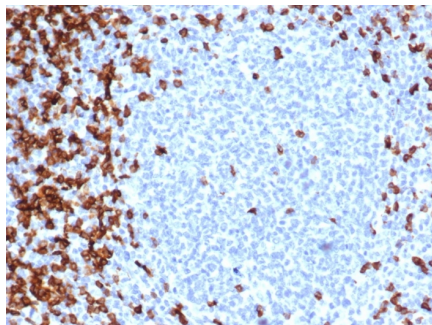
SDS-PAGE Analysis of Purified CD7 Recombinant Rabbit Monoclonal Antibody (CD7/6388R). Confirmation of Purity and Integrity of Antibody.



Western blot analysis of HepG2 cell lysate using CD7 Recombinant Rabbit Monoclonal Antibody (CD7/6388R).



Western blot analysis of HepG2 cell lysate using CD7 Recombinant Rabbit Monoclonal Antibody (CD7/6388R).



Formalin-fixed, paraffin-embedded human tonsil stained with CD7 Recombinant Rabbit Monoclonal Antibody (CD7/6388R).

### Specificity & Comments

Recognizes a protein of 40kDa, identified as CD7 (also known as gp40, Leu9). CD7 is a member of the immunoglobulin gene superfamily. Its N-terminal amino acids 1-107 are highly homologous to Ig kappa-L chains whereas the carboxyl-terminal region of the extracellular domain is proline-rich and has been postulated to form a stalk from which the Ig domain projects. CD7 is expressed on the majority of immature and mature T-lymphocytes, and T cell leukemia. It is also found on natural killer cells, a small subpopulation of normal B cells and on malignant B cells. Cross-linking surface CD7 positively modulates T cell and NK cell activity as measured by calcium fluxes, expression of adhesion molecules, cytokine secretion and proliferation. CD7 associates directly with phosphoinositol 3'-kinase. CD7 ligation induces production of D-3 phosphoinositides and tyrosine phosphorylation.

### Limitations and Warranty

This antibody is available for research use only and is not approved for use in diagnosis. There are no warranties, expressed or implied, which extend beyond this description. Company is not liable for any personal injury or economic loss resulting from this product.

### Supplied As

200ug/ml of Ab purified from Bioreactor Concentrate by Protein A/G. Prepared in 10mM PBS with 0.05% BSA & 0.05% azide. Also available WITHOUT BSA & azide at 1.0mg/ml.

### Storage and Stability

Antibody with azide - store at 2 to 8 °C. Antibody without azide - store at -20 to -80 °C. Antibody is stable for 24 months. Non-hazardous. No MSDS required.