

## Recombinant CD6 (Negative Marker of T-regulatory Cells) Antibody

Rabbit Monoclonal Antibody [Clone C6/2884R]

Catalog No	Format	Size
923-RBM5-P0	Purified Ab with BSA and Azide at 200ug/ml	20 ug
923-RBM5-P1	Purified Ab with BSA and Azide at 200ug/ml	100 ug
923-RBM5-P1ABX	Purified Ab WITHOUT BSA and Azide at 1.0mg/ml	100 ug

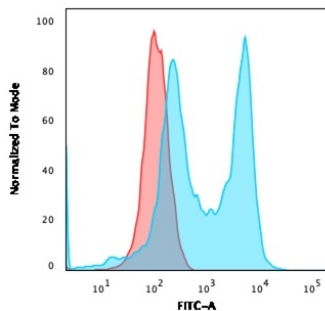
Applications	Tested Dillution	Note
Flow Cytometry (Flow)	1-2ug/million cells	
Immunofluorescence (IF)	1-3ug/ml	
Immunohistochemistry (IHC)	1-2ug/ml	30 min at RT. Staining of formalin-fixed tissues requires heating tissue sections in 10mM Tris with 1mM EDTA, pH 9.0, for 45 min at 95°C followed by cooling at RT for 20 minutes

### Product Details

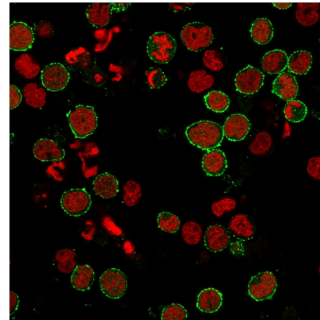
<b>Clone</b>	C6/2884R
<b>Gene Name</b>	CD6
<b>Immunogen</b>	Human recombinant full-length CD6 protein
<b>Host</b>	Rabbit
<b>Clonality</b>	Monoclonal
<b>Isotype / Light Chain</b>	IgG / Kappa
<b>Mol. Weight of Antigen</b>	90-130kDa
<b>Cellular Localization</b>	Cell membrane, Secreted
<b>Species Reactivity</b>	Human
<b>Positive Control</b>	CCRF-CEM, Jurkat cells, Molt-4, Tonsil.

\*Optimal dilution for a specific application should be determined.

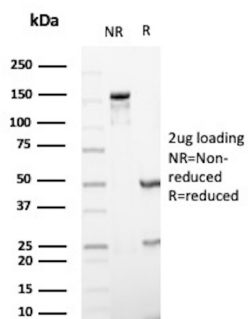
### Product Images for Recombinant CD6 (Negative Marker of T-regulatory Cells) Antibody



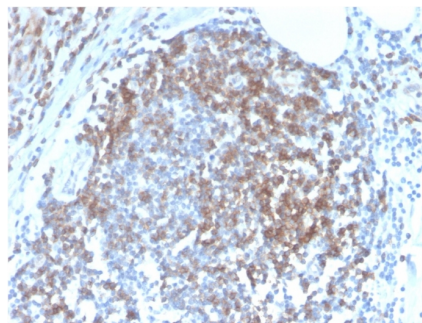
Flow Cytometric Analysis of MOLT-4 cells. CD6 Rabbit Recombinant Monoclonal Antibody (C6/2884R) followed by goat anti-rabbit IgG-CF488 (Blue); Isotype control (Red).



Immunofluorescence staining of MOLT-4 cells using CD6 Rabbit Recombinant Monoclonal Antibody (C6/2884R) followed by goat anti-rabbit IgG conjugated to CF488 (green). Nuclei are stained with Reddot.



SDS-PAGE Analysis of Purified T-cell differentiation antigen CD6 Recombinant Rabbit Monoclonal Antibody (C6/2884R). Confirmation of Purity and Integrity of Antibody.



Formalin-fixed, paraffin-embedded human Tonsil stained with CD6 Rabbit Recombinant Monoclonal Antibody (C6/2884R).

### Specificity & Comments

CD6 is a type I transmembrane glycoprotein that contains a 24-amino acid signal sequence, three extracellular scavenger receptor cysteine-rich (SRCR) domains, a membrane-spanning domain and a 44-amino acid cytoplasmic domain. The CD6 glycoprotein is tyrosine phosphorylated during TCR-mediated T cell activation. CD6 is present on mature thymocytes, peripheral T cells and a subset of B cells. Antibodies to CD6 are used to deplete T cells from bone marrow transplants to prevent graft versus host disease.

### Limitations and Warranty

This antibody is available for research use only and is not approved for use in diagnosis. There are no warranties, expressed or implied, which extend beyond this description. Company is not liable for any personal injury or economic loss resulting from this product.

### Supplied As

200ug/ml of Ab Purified from Bioreactor Concentrate by Protein A/G. Prepared in 10mM PBS with 0.05% BSA & 0.05% azide. Also available WITHOUT BSA & azide at 1.0mg/ml.

### Storage and Stability

Antibody with azide - store at 2 to 8°C. Antibody without azide - store at -20 to -80°C. Antibody is stable for 24 months. Non-hazardous. No MSDS required.