

## CD6 (Negative Marker of T-regulatory Cells) Antibody

Mouse Monoclonal Antibody [Clone 3F7B5]

Catalog No	Format	Size
923-MSM1-P0	Purified Ab with BSA and Azide at 200ug/ml	20 ug
923-MSM1-P1	Purified Ab with BSA and Azide at 200ug/ml	100 ug
923-MSM1-P1ABX	Purified Ab WITHOUT BSA and Azide at 1.0mg/ml	100 ug

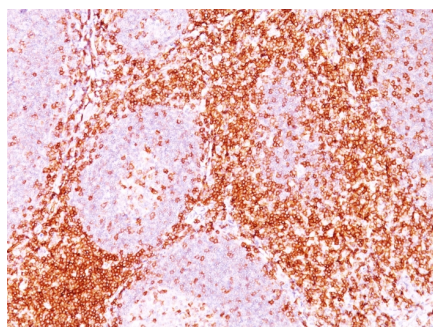
Applications	Tested Dillution	Note
Flow Cytometry (Flow)	1-2ug/million cells	
Immunofluorescence (IF)	1-3ug/ml	
Immunohistochemistry (IHC)	1-2ug/ml	30 min at RT. Staining of formalin-fixed tissues requires heating tissue sections in 10mM Tris with 1mM EDTA, pH 9.0, for 45 min at 95°C followed by cooling at RT for 20 minutes

### Product Details

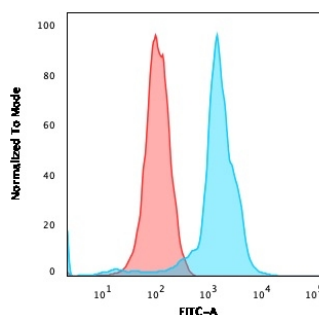
Clone	3F7B5
Gene Name	CD6
Immunogen	Human rheumatoid synovial T cell line ST-1
Host	Mouse
Clonality	Monoclonal
Isotype / Light Chain	IgG1 / Kappa
Mol. Weight of Antigen	90-130kDa
Cellular Localization	Cell membrane, Secreted
Species Reactivity	Human
Positive Control	CCRF-CEM, Jurkat cells, Molt-4, Tonsil.

*\*Optimal dilution for a specific application should be determined.*

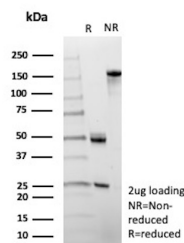
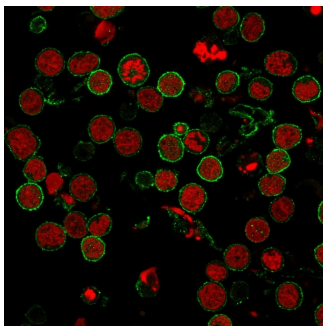
### Product Images for CD6 (Negative Marker of T-regulatory Cells) Antibody



Formalin-fixed, paraffin-embedded human Tonsil (20X) stained with CD6 Monoclonal Antibody (3F7B5).

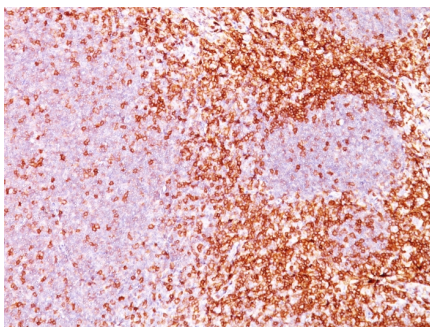


Flow Cytometric Analysis of MOLT-4 cells. CD6 Monoclonal Antibody (3F7B5) followed by goat anti-Mouse IgG-CF488 (Blue); Isotype control (Red).



Immunofluorescence staining of MOLT-4 cells using CD6 MAb (3F7B5) followed by goat anti-Mouse IgG conjugated to CF488 (green). Nuclei are stained with Reddot.

SDS-PAGE Analysis of Purified CD6 Monoclonal Antibody (3F7B5). Confirmation of Purity and Integrity of Antibody.



Formalin-fixed, paraffin-embedded human Tonsil (10X) stained with CD6 Monoclonal Antibody (3F7B5).

### Specificity & Comments

CD6 is a type I transmembrane glycoprotein that contains a 24-amino acid signal sequence, three extracellular scavenger receptor cysteine-rich (SRCR) domains, a membrane-spanning domain and a 44-amino acid cytoplasmic domain. The CD6 glycoprotein is tyrosine phosphorylated during TCR-mediated T cell activation. CD6 shows significant homology to CD5. CD6 is present on mature thymocytes, peripheral T cells and a subset of B cells. Antibodies to CD6 are used to deplete T cells from bone marrow transplants to prevent graft versus host disease.

### Supplied As

200ug/ml of Ab Purified from Bioreactor Concentrate by Protein A/G. Prepared in 10mM PBS with 0.05% BSA & 0.05% azide. Also available WITHOUT BSA & azide at 1.0mg/ml.

### Storage and Stability

Antibody with azide - store at 2 to 8°C. Antibody without azide - store at -20 to -80°C. Antibody is stable for 24 months. Non-hazardous. No MSDS required.

### Limitations and Warranty

This antibody is available for research use only and is not approved for use in diagnosis. There are no warranties, expressed or implied, which extend beyond this description. Company is not liable for any personal injury or economic loss resulting from this product.