

Aurora B (Proliferation Marker) Antibody

Mouse Monoclonal Antibody [Clone AURKB/1521]

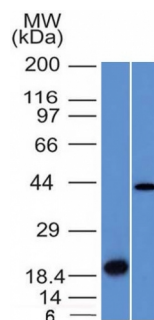
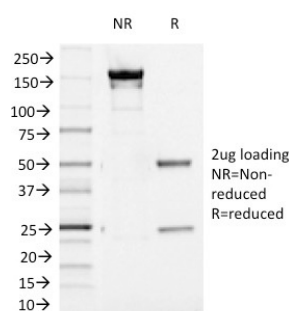
Catalog No	Format	Size
9212-MSM1-P0	Purified Ab with BSA and Azide	200ug/ml
9212-MSM1-P1	Purified Ab with BSA and Azide	200ug/ml
9212-MSM1-P1ABX	Purified Ab WITHOUT BSA and Azide	1.0mg/ml

Applications	Tested Dillution
Western Blot (WB)	2-4ug/ml

Product Details	
Clone	AURKB/1521
Gene Name	AURKB
Immunogen	Recombinant fragment (around aa 89-251) of human Aurora B protein (exact sequence is proprietary)
Host	Mouse
Clonality	Monoclonal
Isotype / Light Chain	IgG1 / Kappa
Mol. Weight of Antigen	39kDa
Cellular Localization	Centromere, Chromosome, Cytoplasm, Cytoskeleton, Kinetochore, Midbody, Nucleus, Spindle
Species Reactivity	Human
Positive Control	HeLa cells. Tonsil, Hodgkin's Lymphoma or Colon Carcinoma., Placenta

**Optimal dilution for a specific application should be determined.*

Product Images for Aurora B (Proliferation Marker) Antibody



SDS-PAGE Analysis of Purified Aurora B Mouse Monoclonal Antibody (AURKB/1521). Confirmation of Purity and Integrity of Antibody.

Western Blot Analysis (A) Recombinant Protein (B) Human Liver lysate Aurora B Mouse Monoclonal Antibody (AURKB/1521).

Specificity & Comments

Recognizes a protein of 39kDa, which is identified as Aurora B. The serine/threonine protein kinase aurora B (Aurora B) is a chromosomal passenger protein critical for accurate chromosome segregation, cytokinesis, protein localization to the centromere and kinetochore, correct microtubule-kinetochore attachment, and regulation of the mitotic checkpoint. Aurora B forms a tight complex with inner centrosome protein and survivin. Inactivation of any of these proteins causes similar defects in chromosome segregation. A significant overexpression of Aurora B has been found in a variety of human tumors including non-small cell lung carcinoma, astrocytoma, seminoma and carcinomas of the colon, prostate, endometrium and thyroid. The expression level of Aurora B is associated with cell proliferation and prognosis in these tumors.

Research Areas

Signal Transduction, Transcription Factors

Known Applications & Suggested Dilutions

Western Blot (1-2ug/ml) | Optimal dilution for a specific application should be determined.

Limitations and Warranty

This antibody is available for research use only and is not approved for use in diagnosis.

There are no warranties, expressed or implied, which extend beyond this description. Company is not liable for any personal injury or economic loss resulting from this product.

Supplied As

200ug/ml of Ab Purified from Bioreactor Concentrate by Protein A/G. Prepared in 10mM PBS with 0.05% BSA & 0.05% azide. Also available WITHOUT BSA & azide at 1.0mg/ml.

Storage and Stability

Antibody with azide - store at 2 to 8°C. Antibody without azide - store at -20 to -80°C. Antibody is stable for 24 months. Non-hazardous. No MSDS required.