

BMP15 / GDF9B Antibody

Mouse Monoclonal Antibody [Clone BMP15/4263]

Catalog No	Format	Size
9210-MSM1-P0	Purified Ab with BSA and Azide at 200ug/ml	20 ug
9210-MSM1-P1	Purified Ab with BSA and Azide at 200ug/ml	100 ug
9210-MSM1-P1ABX	Purified Ab WITHOUT BSA and Azide at 1.0mg/ml	100 ug

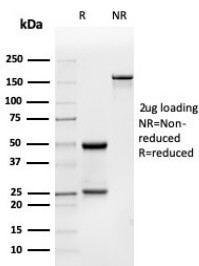
Applications	Tested Dillution	Note
Western Blot (WB)	2-4ug/ml	

Product Details

Clone	BMP15/4263
Gene Name	BMP15
Immunogen	Recognizes sequence SAEVTASSSKHSGPENNCQ on the C-terminus of human GDF9B (BMP15)
Host	Mouse
Clonality	Monoclonal
Isotype / Light Chain	IgG1
Mol. Weight of Antigen	45kDa
Cellular Localization	Secreted
Species Reactivity	Human
Positive Control	HeLa cells.

*Optimal dilution for a specific application should be determined.

Product Images for BMP15 / GDF9B Antibody



SDS-PAGE Analysis of Purified BMP15 Mouse Monoclonal Antibody (BMP15/4263)
Confirmation of Integrity and Purity of Antibody.

Specificity & Comments

BMP15, also known as GDF9B, plays a crucial role in the regulation of fertility. Clone BMP15/4263 can be used to detect BMP15 expression and biosynthesis in various carcinoma progression studies.

Supplied As

200ug/ml of Ab purified from Bioreactor Concentrate by Protein A/G. Prepared in 10mM PBS with 0.05% BSA & 0.05% azide. Also available WITHOUT BSA & azide at 1.0mg/ml.

Storage and Stability

Antibody with azide - store at 2 to 8 °C. Antibody without azide - store at -20 to -80 °C. Antibody is stable for 24 months. Non-hazardous. No MSDS required.

Research Areas

AKT Signaling

Limitations and Warranty

This antibody is available for research use only and is not approved for use in diagnosis. There are no warranties, expressed or implied, which extend beyond this description. Company is not liable for any personal injury or economic loss resulting from this product.