

Recombinant CD5 (Mantle Cell Lymphoma Marker) Antibody

Rabbit Monoclonal Antibody [Clone C5/7020R]

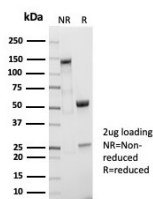
Catalog No	Format	Size
921-RBM17-P0	Purified Ab with BSA and Azide	200ug/ml
921-RBM17-P1	Purified Ab with BSA and Azide	200ug/ml
921-RBM17-P1ABX	Purified Ab WITHOUT BSA and Azide	1.0mg/ml

Applications	Tested Dillution
Immunohistochemistry (IHC)	1-2ug/ml

Product Details	
Clone	C5/7020R
Gene Name	CD5
Immunogen	Recombinant full-length protein corresponding to human CD5
Host	Rabbit
Clonality	Monoclonal
Isotype / Light Chain	IgG / Kappa
Mol. Weight of Antigen	~67kDa
Cellular Localization	Cell membrane
Species Reactivity	Human
Positive Control	293T, or MOLT-4 cells. Human tonsil or lymph node., Ramos

**Optimal dilution for a specific application should be determined.*

Product Images for Recombinant CD5 (Mantle Cell Lymphoma Marker) Antibody



SDS-PAGE Analysis Purified CD5 Recombinant Rabbit Monoclonal Antibody (C5/7020R). Confirmation of Purity and Integrity of Antibody.

Specificity & Comments

The CD5 antigen is a transmembrane glycoprotein expressed on the surface of practically all mature human T-cells (about 10% of CD4+ T-cells being CD5 negative). In immature (CD34+) T-cells, CD5 is weakly expressed, the intensity of expression increasing with maturation. CD5 is also expressed in a small subset of normal human B-cells (20% of B-cells in the peripheral blood, scattered cells in the lymph node mantle zone). The CD5+ cells are probably involved in B-T interaction and their ligand is CD72 which is expressed on all B cells. It appears that CD5+ B-cells on activation primarily produce IgM. They also produce more autoantibodies than normal CD5 negative B-cells. Thus, the CD5+ B-cell population is expanded in rheumatoid arthritis and systemic lupus erythematosus. The CD5 antibody reacts with CD5 expressed on B and T cells, and may be a useful aid for the classification of B and T-cell malignancies. This includes B-cell chronic lymphoid leukemia (B-CLL), B-cell small lymphocytic lymphoma (B-SLL), mantle cell lymphoma (MCL) and T-cell lymphoma and leukemia.

Research Areas

B Cell Markers, Hematopoietic Stem Cells

Known Applications & Suggested Dilutions

Immunohistochemistry (Formalin-fixed) (1-2ug/ml for 30 minutes at RT),(Staining of formalin-fixed tissues requires heating tissue sections in 10mM Tris with 1mM EDTA, pH 9.0, for 45 min at 95 °C followed by cooling at RT for 20 minutes),Optimal dilution for a specific application should be determined.

Limitations and Warranty

This antibody is available for research use only and is not approved for use in diagnosis.

There are no warranties, expressed or implied, which extend beyond this description. Company is not liable for any personal injury or economic loss resulting from this product.

Supplied As

200ug/ml of Ab purified from Bioreactor Concentrate by Protein A/G. Prepared in 10mM PBS with 0.05% BSA & 0.05% azide. Also available WITHOUT BSA & azide at 1.0mg/ml.

Storage and Stability

Antibody with azide - store at 2 to 8 °C. Antibody without azide - store at -20 to -80 °C. Antibody is stable for 24 months. Non-hazardous. No MSDS required.