

CD5 (Mantle Cell Lymphoma Marker) Antibody

Mouse Monoclonal Antibody [Clone SPM546]

Catalog No	Format	Size
921-MSM1X-P0	Purified Ab with BSA and Azide at 200ug/ml	20 ug
921-MSM1X-P1	Purified Ab with BSA and Azide at 200ug/ml	100 ug
921-MSM1X-P1ABX	Purified Ab WITHOUT BSA and Azide at 1.0mg/ml	100 ug

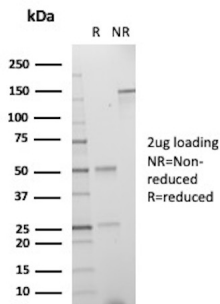
Applications	Tested Dillution	Note
Flow Cytometry (Flow)	1-2ug/million cells	
Immunofluorescence (IF)	1-3ug/ml	
Immunohistochemistry (IHC)	1-2ug/ml	30 min at RT. Staining of formalin-fixed tissues requires heating tissue sections in 10mM Tris with 1mM EDTA, pH 9.0, for 45 min at 95°C followed by cooling at RT for 20 minutes

Product Details

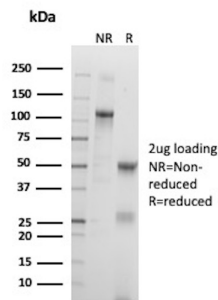
Clone	SPM546
Gene Name	CD5
Immunogen	Human CD5 recombinant protein
Host	Mouse
Clonality	Monoclonal
Isotype / Light Chain	IgG1 / Kappa
Mol. Weight of Antigen	~67kDa
Cellular Localization	Cell membrane
Species Reactivity	Human
Positive Control	293T, Ramos or MOLT-4 cells. Tonsil.

*Optimal dilution for a specific application should be determined.

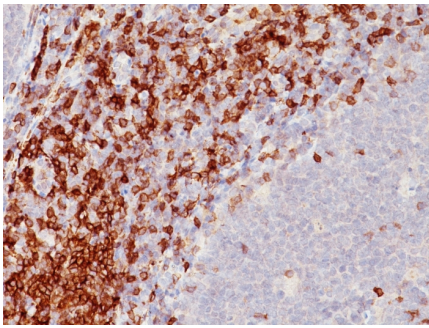
Product Images for CD5 (Mantle Cell Lymphoma Marker) Antibody



SDS-PAGE Analysis of Purified T-cell surface glycoprotein CD5 Mouse Monoclonal Antibody (SPM546). Confirmation of Purity and Integrity of Antibody.



SDS-PAGE Analysis of Purified T-cell surface glycoprotein CD5 Recombinant Mouse Monoclonal Antibody (SPM546). Confirmation of Purity and Integrity of Antibody.



Formalin-fixed, paraffin-embedded human Tonsil stained with CD5 Monoclonal Antibody (SPM546)

Specificity & Comments

Recognizes a 67kDa transmembrane protein, which is identified as CD5. The CD5 antigen is found on 95% of thymocytes and 72% of peripheral blood lymphocytes. In lymph nodes, the main reactivity is observed in T cell areas. Anti-CD5 is a pan T-cell marker that also reacts with a range of neoplastic B-cells, e.g. chronic lymphocytic leukemia/small lymphocytic lymphoma (CLL/SLL), mantle cell lymphoma, and a subset (~10%) of diffuse large B-cell lymphoma. CD5 aberrant expression is useful in making a diagnosis of mature T-cell neoplasms. Anti-CD5 detection is diagnostic in CLL/SLL within a panel of other B-cell markers, especially one that includes anti-CD23. Anti-CD5 is also very useful in differentiating among mature small lymphoid cell malignancies. In addition, anti-CD5 can be used in distinguishing thymic carcinoma (+) from thymoma (-). Anti-CD5 does not react with granulocytes or monocytes.

Limitations and Warranty

This antibody is available for research use only and is not approved for use in diagnosis. There are no warranties, expressed or implied, which extend beyond this description. Company is not liable for any personal injury or economic loss resulting from this product.

Supplied As

200ug/ml of Ab Purified from Bioreactor Concentrate by Protein A/G. Prepared in 10mM PBS with 0.05% BSA & 0.05% azide. Also available WITHOUT BSA & azide at 1.0mg/ml.

Storage and Stability

Antibody with azide - store at 2 to 8°C. Antibody without azide - store at -20 to -80°C. Antibody is stable for 24 months. Non-hazardous. No MSDS required.

Research Areas

B Cell Markers, Hematopoietic Stem Cells