

CD4 (T-Helper/Inducer Cell Marker) Antibody

Mouse Monoclonal Antibody [Clone CD4/7142]

Catalog No	Format	Size
920-MSM12-P0	Purified Ab with BSA and Azide at 200ug/ml	20 ug
920-MSM12-P1	Purified Ab with BSA and Azide at 200ug/ml	100 ug
920-MSM12-P1ABX	Purified Ab WITHOUT BSA and Azide at 1.0mg/ml	100 ug

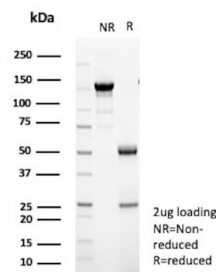
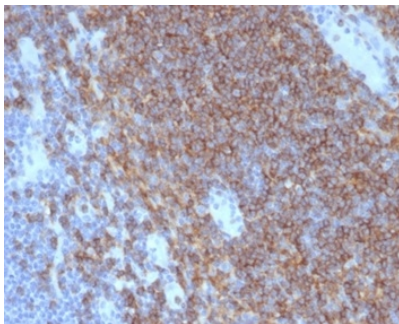
Applications	Tested Dillution	Note
Immunohistochemistry (IHC)	1-2ug/ml	30 min at RT. Staining of formalin-fixed tissues requires heating tissue sections in 10mM Tris with 1mM EDTA, pH 9.0, for 45 min at 95°C followed by cooling at RT for 20 minutes

Product Details

Clone	CD4/7142
Gene Name	CD4
Immunogen	Recombinant fragment (around aa200-400) of human CD4 protein (exact sequence is proprietary)
Host	Mouse
Clonality	Monoclonal
Isotype / Light Chain	IgG2c / Kappa
Mol. Weight of Antigen	55kDa
Cellular Localization	Cell membrane
Species Reactivity	Human
Positive Control	CCRF-CEM or HL-60. Lymph node or tonsil., Human peripheral blood mononuclear cells (PBMCs)

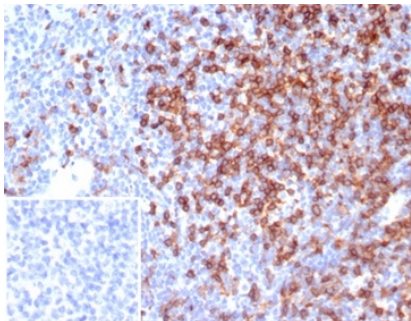
*Optimal dilution for a specific application should be determined.

Product Images for CD4 (T-Helper/Inducer Cell Marker) Antibody



IHC analysis of formalin-fixed, paraffin-embedded human lymph node. Cell surface staining using CD4/7142 at 2ug/ml in PBS for 30min RT. HIER: Tris/EDTA, pH9.0, 45min. 2 °: HRP-polymer, 30min. DAB, 5min.

SDS-PAGE Analysis of Purified CD4 Recombinant Rabbit Monoclonal Antibody(CD4/7142). Confirmation of Purity and Integrity of Antibody



Formalin-fixed, paraffin-embedded human tonsil stained with CD4 Mouse Monoclonal Antibody (CD4/7142). Inset: PBS instead of primary antibody; secondary only negative control.

Specificity & Comments

Recognizes a protein of 55kDa, identified as CD4. It is a membrane glycoprotein of T lymphocytes that interacts with major histocompatibility complex class II antigens and is also a receptor for the human immunodeficiency virus. This protein is expressed not only in T lymphocytes, but also in B cells, macrophages, and granulocytes. It is also expressed in specific regions of the brain. The protein functions to initiate or augment the early phase of T-cell activation, and may function as an important mediator of indirect neuronal damage in infectious and immune-mediated diseases of the central nervous system. Multiple alternatively spliced transcript variants encoding different isoforms have been identified.

Limitations and Warranty

This antibody is available for research use only and is not approved for use in diagnosis. There are no warranties, expressed or implied, which extend beyond this description. Company is not liable for any personal injury or economic loss resulting from this product.

Supplied As

200ug/ml of Ab purified from Bioreactor Concentrate by Protein A/G. Prepared in 10mM PBS with 0.05% BSA & 0.05% azide. Also available WITHOUT BSA & azide at 1.0mg/ml.

Storage and Stability

Antibody with azide - store at 2 to 8 °C. Antibody without azide - store at -20 to -80 °C. Antibody is stable for 24 months. Non-hazardous. No MSDS required.

Research Areas

AKT Signaling, Cardiovascular, Cytokine Signaling, Hematopoietic Stem Cells, Immunology, Infectious Disease