

Recombinant CD3e (T-Cell Marker) Antibody

Rabbit Monoclonal Antibody [Clone C3e/4653R]

Catalog No	Format	Size
916-RBM23-P0	Purified Ab with BSA and Azide at 200ug/ml	20 ug
916-RBM23-P1	Purified Ab with BSA and Azide at 200ug/ml	100 ug
916-RBM23-P1ABX	Purified Ab WITHOUT BSA at 1.0mg/ml	100 ug

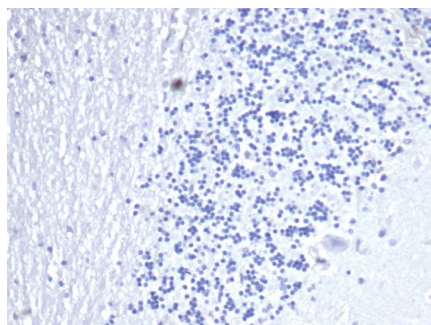
Applications	Tested Dillution	Note
Immunohistochemistry (IHC)	1-2ug/ml	30 min at RT. Staining of formalin-fixed tissues requires heating tissue sections in 10mM Tris with 1mM EDTA, pH 9.0, for 45 min at 95°C followed by cooling at RT for 20 minutes
Western Blot (WB)	2-4ug/ml	

Product Details

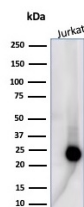
Clone	C3e/4653R
Gene Name	CD3E
Immunogen	Recombinant human CD3e fragment (around aa100-200) (exact sequence is proprietary)
Host	Rabbit
Clonality	Monoclonal
Isotype / Light Chain	IgG / Kappa
Mol. Weight of Antigen	20-25kDa
Cellular Localization	Cell membrane
Species Reactivity	Human
Positive Control	Human tonsil, spleen or lymph node. Human peripheral blood or Jurkat cells.

*Optimal dilution for a specific application should be determined.

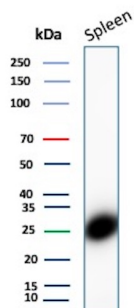
Product Images for Recombinant CD3e (T-Cell Marker) Antibody



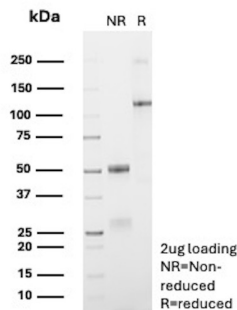
IHC analysis of formalin-fixed, paraffin-embedded human brain. Negative tissue control using C3e/4653R at 2ug/ml in PBS for 30min RT. HIER: Tris/EDTA, pH9.0, 45min. 2°C: HRP-polymer, 30min. DAB, 5min.



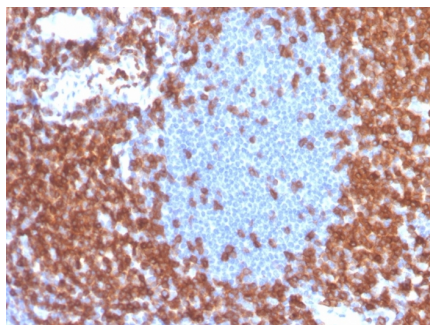
Western Blot Analysis of human Jurkat cell lysate using CD3e Recombinant Rabbit Monoclonal Antibody (CD3e/4653R).



Western Blot Analysis of Human Spleen tissue lysate using CD3e Recombinant Rabbit Monoclonal Antibody (C3e/4653R).



SDS-PAGE Analysis of Purified CD3e Recombinant Rabbit Monoclonal Antibody(C3e/4652R). Confirmation of Purity and Integrity of Antibody



Formalin-fixed, paraffin-embedded human tonsil stained with CD3e Recombinant Rabbit Monoclonal Antibody (CD3e/4653R) at 2ug/ml. HIER: Tris/EDTA, pH9.0, 45min. 2°C: HRP-polymer, 30min. DAB, 5min.

Specificity & Comments

Cluster of differentiation 3 (CD3) is a multimeric protein complex, known historically as the T3 complex, and is composed of four distinct polypeptide chains; epsilon (ε), gamma (γ), delta (δL) and zeta (ζ), that assemble and function as three pairs of dimers (εγ, δLζ, εδL ζζ). The CD3 complex serves as a T cell co-receptor that associates noncovalently with the T cell receptor (TCR).CD3 antigen appearance at all stages of T cell development, and makes it an ideal T cell marker for both the detection of normal T cells and T cell neoplasms (lymphomas and leukemias).

Supplied As

200ug/ml of Ab purified from Bioreactor Concentrate by Protein A/G. Prepared in 10mM PBS with 0.05% BSA & 0.05% azide. Also available WITHOUT BSA & azide at 1.0mg/ml.

Storage and Stability

Antibody with azide - store at 2 to 8 °C. Antibody without azide - store at -20 to -80 °C. Antibody is stable for 24 months. Non-hazardous. No MSDS required.

Research Areas

Cardiovascular, Hematopoietic Stem Cells, Immunology, PD-1 blockade immunotherapy

Limitations and Warranty

This antibody is available for research use only and is not approved for use in diagnosis. There are no warranties, expressed or implied, which extend beyond this description. Company is not liable for any personal injury or economic loss resulting from this product.