

Recombinant CD3e (T-Cell Marker) Antibody

Rabbit Monoclonal Antibody [Clone C3e/3125R]

Catalog No	Format	Size
916-RBM17-P0	Purified Ab with BSA and Azide at 200ug/ml	20 ug
916-RBM17-P1	Purified Ab with BSA and Azide at 200ug/ml	100 ug
916-RBM17-P1ABX	Purified Ab WITHOUT BSA at 1.0mg/ml	100 ug

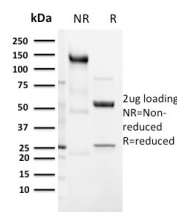
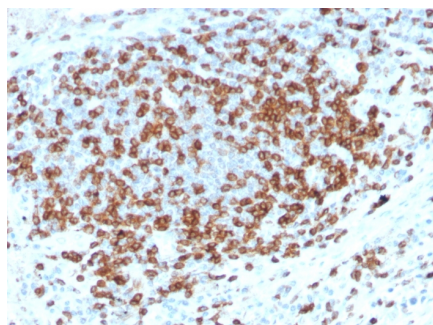
Applications	Tested Dillution	Note
Immunohistochemistry (IHC)	1-2ug/ml	30 min at RT. Staining of formalin-fixed tissues requires heating tissue sections in 10mM Tris with 1mM EDTA, pH 9.0, for 45 min at 95°C followed by cooling at RT for 20 minutes
Western Blot (WB)	2-4ug/ml	

Product Details

Clone	C3e/3125R
Gene Name	CD3E
Immunogen	Recombinant human CD3e fragment (around aa 23-119) (exact sequence is proprietary)
Host	Rabbit
Clonality	Monoclonal
Isotype / Light Chain	IgG / Kappa
Mol. Weight of Antigen	20-25kDa
Cellular Localization	Cell membrane
Species Reactivity	Human
Positive Control	Jurkat and MOLT-4 cells. Human tonsil or lymph node.

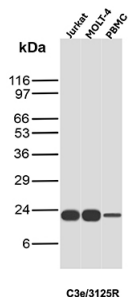
*Optimal dilution for a specific application should be determined.

Product Images for Recombinant CD3e (T-Cell Marker) Antibody

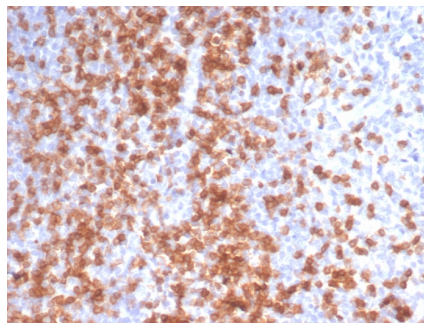


Formalin-fixed, paraffin-embedded human tonsil stained with CD3e Rabbit Recombinant Monoclonal Antibody (C3e/3125R).

SDS-PAGE Analysis of Purified CD3e Rabbit Recombinant Monoclonal Antibody (C3e/3125R). Confirmation of Integrity and Purity of Antibody.



Western Blot analysis of Jurkat, MOLT-4, and PBMC cell lysates using CD3e Recombinant Rabbit Monoclonal Antibody (C3e/3125R)



Formalin-fixed, paraffin-embedded human tonsil stained with CD3e Rabbit Recombinant Monoclonal Antibody (C3e/3125R).

Specificity & Comments

Recognizes the epsilon-chain of CD3, which consists of five different polypeptide chains (designated as gamma, delta, epsilon, zeta, and eta) with MW ranging from 16-28kDa. The CD3 complex is closely associated at the lymphocyte cell surface with the T cell antigen receptor (TCR). Reportedly, CD3 complex is involved in signal transduction to the T cell interior following antigen recognition. The CD3 antigen is first detectable in early thymocytes and probably represents one of the earliest signs of commitment to the T cell lineage. In cortical thymocytes, CD3 is predominantly intracytoplasmic. However, in medullary thymocytes, it appears on the T cell surface. CD3 antigen is a highly specific marker for T cells, and is present in majority of T cell neoplasms.

Limitations and Warranty

This antibody is available for research use only and is not approved for use in diagnosis. There are no warranties, expressed or implied, which extend beyond this description. Company is not liable for any personal injury or economic loss resulting from this product.

Supplied As

200ug/ml of Ab purified from Bioreactor Concentrate by Protein A/G. Prepared in 10mM PBS with 0.05% BSA & 0.05% azide. Also available WITHOUT BSA & azide at 1.0mg/ml.

Storage and Stability

Antibody with azide - store at 2 to 8 °C. Antibody without azide - store at -20 to -80 °C. Antibody is stable for 24 months. Non-hazardous. No MSDS required.

Research Areas

Cardiovascular, Hematopoietic Stem Cells, Immunology, PD-1 blockade immunotherapy