

CD3e (T-Cell Marker) Antibody

Mouse Monoclonal Antibody [Clone B-B12]

| Catalog No | Format | Size |
|----------------|--|--------|
| 916-MSM3-P0 | Purified Ab with BSA and Azide at 200ug/ml | 20 ug |
| 916-MSM3-P1 | Purified Ab with BSA and Azide at 200ug/ml | 100 ug |
| 916-MSM3-P1ABX | Purified Ab WITHOUT BSA at 1.0mg/ml | 100 ug |

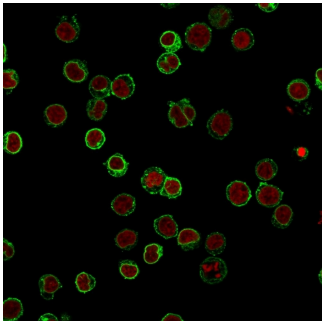
| Applications | Tested Dillution | Note |
|-------------------------|---------------------|------|
| Flow Cytometry (Flow) | 1-2ug/million cells | |
| Immunofluorescence (IF) | 1-3ug/ml | |

Product Details

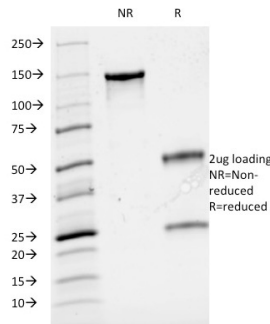
| | |
|------------------------|--------------------------------------|
| Clone | B-B12 |
| Gene Name | CD3E |
| Immunogen | Human T cell leukemia cells |
| Host | Mouse |
| Clonality | Monoclonal |
| Isotype / Light Chain | IgG1 / Kappa |
| Mol. Weight of Antigen | 20kDa |
| Cellular Localization | Cell membrane |
| Species Reactivity | Human |
| Positive Control | Jurkat cells. Tonsil and lymph node. |

*Optimal dilution for a specific application should be determined.

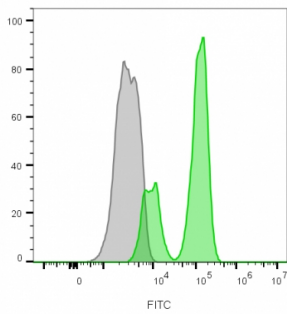
Product Images for CD3e (T-Cell Marker) Antibody



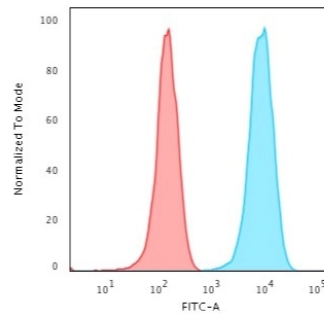
Immunofluorescence Analysis of Jurkat cells labeling CD3e with CD3e Mouse Monoclonal Antibody (B-B12) followed by Goat anti-Mouse IgG-CF488 (Green). The nuclear counterstain is Reddot (Red).



SDS-PAGE Analysis of Purified CD3e Mouse Monoclonal Antibody (B-B12). Confirmation of Integrity and Purity of Antibody.



Flow cytometry analysis of lymphocyte-gated PBMCs unstained (gray) or stained with CF488A-labeled CD3 mouse monoclonal antibody (B-B12) (green).



Flow Cytometric Analysis of Jurkat cells. CD3e Mouse Monoclonal Antibody (B-B12) followed by Goat anti-Mouse IgG-CF488 (Blue); Isotype Control (Red).

Specificity & Comments

Recognizes the epsilon-chain of CD3, which consists of five different polypeptide chains (designated as gamma, delta, epsilon, zeta, and eta) with MW ranging from 16-28kDa. CD3 is expressed, typically at high levels, on peripheral T cells and majority of T cell neoplasms. Thymocytes express CD3 at different level on the cell surface in the course of differentiation and, in cortical thymus, CD3 is predominantly Intracytoplasmic. The CD3 complex is closely associated at the lymphocyte cell surface with T cell antigen receptor (TCR) and is involved in transducing antigen-recognition signals into cytoplasm of T cells and in regulating the cell surface expression of the TCR complex.

Limitations and Warranty

This antibody is available for research use only and is not approved for use in diagnosis. There are no warranties, expressed or implied, which extend beyond this description. Company is not liable for any personal injury or economic loss resulting from this product.

Supplied As

200ug/ml of Ab Purified from rabbit anti-serum by Protein A. Prepared in 10mM PBS with 0.05% BSA & 0.05% azide. Also available WITHOUT BSA at 1.0mg/ml.

Storage and Stability

Antibody with azide - store at 2 to 8°C. Antibody without azide - store at -20 to -80°C. Antibody is stable for 24 months. Non-hazardous. No MSDS required.

Research Areas

Cardiovascular, Hematopoietic Stem Cells, Immuno Oncology, Immunology, PD-1 blockade immunotherapy