

Recombinant CD3e (T-Cell Marker) Antibody

Mouse Monoclonal Antibody [Clone rC3e/1931]

Catalog No	Format	Size
916-MSM20-P0	Purified Ab with BSA and Azide at 200ug/ml	20 ug
916-MSM20-P1	Purified Ab with BSA and Azide at 200ug/ml	100 ug
916-MSM20-P1ABX	Purified Ab WITHOUT BSA at 1.0mg/ml	100 ug

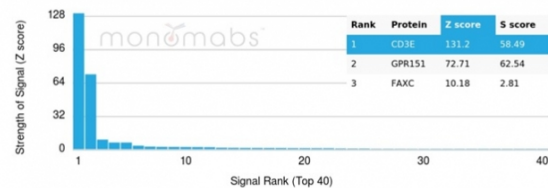
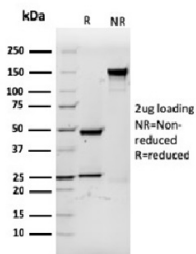
Applications	Tested Dillution	Note
Immunohistochemistry (IHC)	1-2ug/ml	30 min at RT. Staining of formalin-fixed tissues requires heating tissue sections in 10mM Tris with 1mM EDTA, pH 9.0, for 45 min at 95°C followed by cooling at RT for 20 minutes
Western Blot (WB)	2-4ug/ml	

Product Details

Clone	rC3e/1931
Gene Name	CD3E
Immunogen	A recombinant human CD3e protein fragment (around aa 23-119) (exact sequence is proprietary)
Host	Mouse
Clonality	Monoclonal
Isotype / Light Chain	IgG1 / Kappa
Mol. Weight of Antigen	20kDa
Cellular Localization	Cell membrane
Species Reactivity	Human
Positive Control	Jurkat cells. Human tonsil or lymph node.

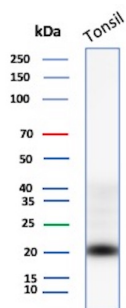
*Optimal dilution for a specific application should be determined.

Product Images for Recombinant CD3e (T-Cell Marker) Antibody

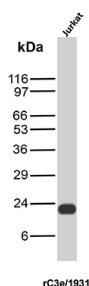


SDS-PAGE Analysis of Purified CD3e Recombinant Mouse Monoclonal Antibody (rC3e/1931). Confirmation of Purity and Integrity of Antibody.

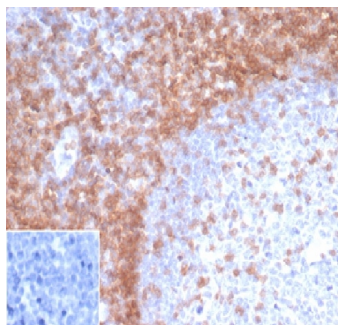
Analysis of Protein Array containing more than 19,000 full-length human proteins using CD3e Monospecific Recombinant Mouse Monoclonal Antibody (rC3e/1931). Z- and S- Score: The Z-score represents the strength of a signal that a monoclonal antibody (MAb) (in combination with a fluorescently-tagged anti-IgG secondary antibody) produces when binding to a particular protein on the HuProt™ array. Z-scores are described in units of standard deviations (SD's) above the mean value of all signals generated on that array. If targets on HuProt™ are arranged in descending order of the Z-score, the S-score is the difference (also in units of SD's) between the Z-score. S-score therefore represents the relative target specificity of a MAb to its intended target. A MAb is considered to be specific to its intended target, if the MAb has an S-score of at least 2.5. For example, if a MAb binds to protein X with a Z-score of 43 and to protein Y with a Z-score of 14, then the S-score for the binding of that MAb to protein X is equal to 29.



Western Blot Analysis of Human Tonsil tissue lysate using CD3e Recombinant Mouse Monoclonal Antibody (rC3e/1931).



Western Blot analysis of Jurkat cell lysate using CD3e Recombinant Mouse Monoclonal Antibody (rC3e/1931).



Formalin-fixed, paraffin-embedded human tonsil stained with CD3e Recombinant Mouse Monoclonal Antibody (rC3e/1931) at 2ug/ml. Inset: PBS instead of primary antibody, secondary control.

Specificity & Comments

Recognizes the epsilon-chain of CD3, which consists of five different polypeptide chains (designated as gamma, delta, epsilon, zeta, and eta) with MW ranging from 16-28kDa. The CD3 complex is closely associated at the lymphocyte cell surface with the T cell antigen receptor (TCR). Reportedly, CD3 complex is involved in signal transduction to the T cell interior following antigen recognition. The CD3 antigen is first detectable in early thymocytes and probably represents one of the earliest signs of commitment to the T cell lineage. In cortical thymocytes, CD3 is predominantly intracytoplasmic. However, in medullary thymocytes, it appears on the T cell surface. CD3 antigen is a highly specific marker for T cells, and is present in majority of T cell neoplasms.

Limitations and Warranty

This antibody is available for research use only and is not approved for use in diagnosis. There are no warranties, expressed or implied, which extend beyond this description. Company is not liable for any personal injury or economic loss resulting from this product.

Supplied As

200ug/ml of Ab purified from Bioreactor Concentrate by Protein A/G. Prepared in 10mM PBS with 0.05% BSA & 0.05% azide. Also available WITHOUT BSA & azide at 1.0mg/ml.

Storage and Stability

Antibody with azide - store at 2 to 8 °C. Antibody without azide - store at -20 to -80 °C. Antibody is stable for 24 months. Non-hazardous. No MSDS required.

Research Areas

Cardiovascular, Hematopoietic Stem Cells, Immunology, PD-1 blockade immunotherapy