

CD3e (T-Cell Marker) Antibody

Mouse Monoclonal Antibody [Clone CRIS-7]

Catalog No	Format	Size
916-MSM2-P0	Purified Ab with BSA and Azide at 200ug/ml	20 ug
916-MSM2-P1	Purified Ab with BSA and Azide at 200ug/ml	100 ug
916-MSM2-P1ABX	Purified Ab WITHOUT BSA at 1.0mg/ml	100 ug

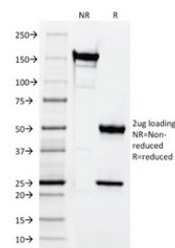
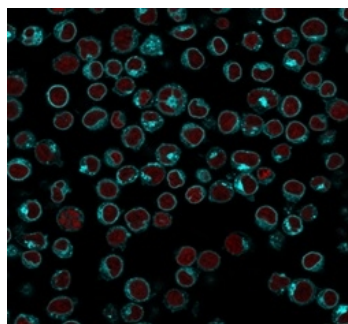
Applications	Tested Dillution	Note
Flow Cytometry (Flow)	1-2ug/million cells	
Immunofluorescence (IF)	1-3ug/ml	

Product Details

Clone	CRIS-7
Gene Name	CD3E
Immunogen	Stimulated human leukocytes
Host	Mouse
Clonality	Monoclonal
Isotype / Light Chain	IgG2a / Kappa
Mol. Weight of Antigen	20kDa
Cellular Localization	Cell membrane
Species Reactivity	Human, Monkey
Positive Control	Jurkat cells. Human tonsil and lymph node.

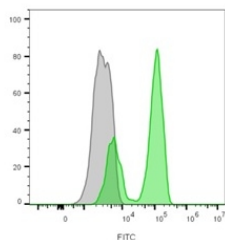
**Optimal dilution for a specific application should be determined.*

Product Images for CD3e (T-Cell Marker) Antibody

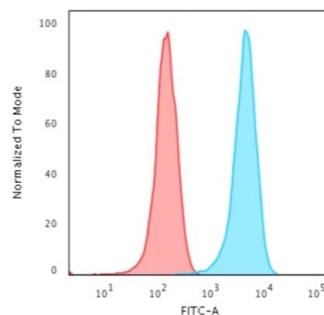


Immunofluorescence Analysis of PFA-fixed Jurkat cells. CD3e Mouse Monoclonal Antibody (CRIS-7) followed by goat anti-mouse IgG-CF488 (cyan). Nuclei stained with RedDot (red).

SDS-PAGE Analysis of Purified CD3e Mouse Monoclonal Antibody (CRIS-7). Confirmation of Integrity and Purity of Antibody.



Flow cytometric analysis of lymphocyte-gated peripheral blood mononuclear cells. CD3e Mouse Monoclonal Antibody (CRIS-7) followed goat anti-mouse IgG-CF488A (green); unstained PBMCs (gray).



Flow Cytometric Analysis of Jurkat cells. CD3e Mouse Monoclonal Antibody (CRIS-7) followed by goat anti-mouse IgG-CF488 (blue); isotype control (red).

Specificity & Comments

Recognizes the epsilon-chain of CD3, which consists of five different polypeptide chains (designated as gamma, delta, epsilon, zeta, and eta) with MW ranging from 16-28kDa. The CD3 complex is closely associated at the lymphocyte cell surface with the T cell antigen receptor (TCR). Reportedly, CD3 complex is involved in signal transduction to the T cell interior following antigen recognition. The CD3 antigen is first detectable in early thymocytes and probably represents one of the earliest signs of commitment to the T cell lineage. In cortical thymocytes, CD3 is predominantly intracytoplasmic. However, in medullary thymocytes, it appears on the T cell surface. CD3 antigen is a highly specific marker for T cells, and is present in majority of T cell neoplasms.

Supplied As

200ug/ml of Ab purified from rabbit anti-serum by Protein A. Prepared in 10mM PBS with 0.05% BSA & 0.05% azide. Also available WITHOUT BSA at 1.0mg/ml.

Storage and Stability

Antibody with azide - store at 2 to 8 °C. Antibody without azide - store at -20 to -80 °C. Antibody is stable for 24 months. Non-hazardous. No MSDS required.

Research Areas

Cardiovascular, Hematopoietic Stem Cells, Immunology, PD-1 blockade immunotherapy

Limitations and Warranty

This antibody is available for research use only and is not approved for use in diagnosis. There are no warranties, expressed or implied, which extend beyond this description. Company is not liable for any personal injury or economic loss resulting from this product.