

CD3e (T-Cell Marker) Antibody

Mouse Monoclonal Antibody [Clone UCHT1]

Catalog No	Format	Size
916-MSM13-P0	Purified Ab with BSA and Azide at 200ug/ml	20 ug
916-MSM13-P1	Purified Ab with BSA and Azide at 200ug/ml	100 ug
916-MSM13-P1ABX	Purified Ab WITHOUT BSA at 1.0mg/ml	100 ug

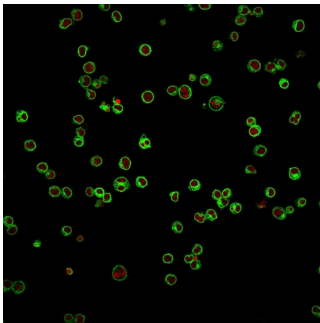
Applications	Tested Dillution	Note
Flow Cytometry (Flow)	1-2ug/million cells	
Immunofluorescence (IF)	1-3ug/ml	
Immunohistochemistry (IHC)	1-2ug/ml	30 min at RT. Staining of formalin-fixed tissues requires heating tissue sections in 10mM Tris with 1mM EDTA, pH 9.0, for 45 min at 95°C followed by cooling at RT for 20 minutes
Western Blot (WB)	2-4ug/ml	

Product Details

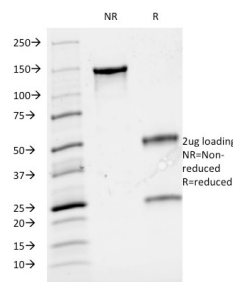
Clone	UCHT1
Gene Name	CD3E
Immunogen	Human infant thymocytes and peripheral blood lymphocytes from a S zary Syndrome donor
Host	Mouse
Clonality	Monoclonal
Isotype / Light Chain	IgG1 / Kappa
Mol. Weight of Antigen	20kDa
Cellular Localization	Cell membrane
Species Reactivity	Chimpanzee, Human
Positive Control	Human peripheral blood. Jurkat cells. Human tonsil or lymph node.

*Optimal dilution for a specific application should be determined.

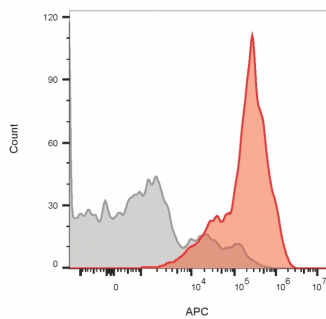
Product Images for CD3e (T-Cell Marker) Antibody



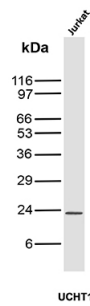
Immunofluorescence Analysis of Jurkat cells labeling CD3e. CD3e Mouse Monoclonal Antibody (UCHT1) followed by goat anti-mouse IgG-CF488 (green). The nuclear counterstain is RedDot (red).



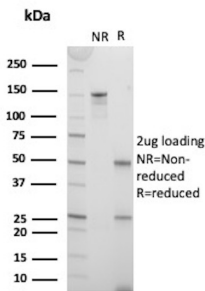
Immunofluorescence Analysis of Jurkat cells labeling CD3e. CD3e Mouse Monoclonal Antibody (UCHT1) followed by goat anti-mouse IgG-CF488 (green). The nuclear counterstain is RedDot (red).



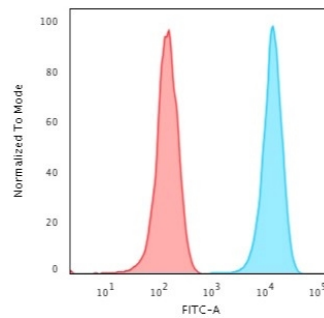
Flow cytometric analysis of lymphocyte-gated PBMCs. Cells stained using CD3 Mouse Monoclonal Antibody (UCHT1) (red). Isotype control (gray) followed by goat anti-mouse CF640R.



Western Blot analysis of Jurkat cell lysate using CD3e Mouse Monoclonal Antibody (UCHT1)



SDS-PAGE Analysis of Purified T-cell surface glycoprotein CD3 epsilon chain Mouse Monoclonal Antibody (UCHT1). Confirmation of Purity and Integrity of Antibody.



Flow Cytometric Analysis of Jurkat cells. CD3e Mouse Monoclonal Antibody (UCHT1) followed by goat anti-mouse IgG-CF488 (blue); isotype control (red).

Specificity & Comments

Recognizes the epsilon-chain of CD3, which consists of five different polypeptide chains (designated as gamma, delta, epsilon, zeta, and eta) with MW ranging from 16-28kDa. The CD3 complex is closely associated at the lymphocyte cell surface with the T cell antigen receptor (TCR). Reportedly, CD3 complex is involved in signal transduction to the T cell interior following antigen recognition. The CD3 antigen is first detectable in early thymocytes and probably represents one of the earliest signs of commitment to the T cell lineage. In cortical thymocytes, CD3 is predominantly intracytoplasmic. However, in medullary thymocytes, it appears on the T cell surface. CD3 antigen is a highly specific marker for T cells, and is present in majority of T cell neoplasms.

Limitations and Warranty

This antibody is available for research use only and is not approved for use in diagnosis. There are no warranties, expressed or implied, which extend beyond this description. Company is not liable for any personal injury or economic loss resulting from this product.

Supplied As

200ug/ml of Ab purified from Bioreactor Concentrate by Protein A/G. Prepared in 10mM PBS with 0.05% BSA & 0.05% azide. Also available WITHOUT BSA & azide at 1.0mg/ml.

Storage and Stability

Antibody with azide - store at 2 to 8 °C. Antibody without azide - store at -20 to -80 °C. Antibody is stable for 24 months. Non-hazardous. No MSDS required.

Research Areas

Cardiovascular, Hematopoietic Stem Cells, Immunology, PD-1 blockade immunotherapy