

## Recombinant CD2 / Lymphocyte Function Antigen 2 (LFA-2) Antibody

Rabbit Monoclonal Antibody [Clone LFA2/3417R]

Catalog No	Format	Size
914-RBM7-P0	Purified Ab with BSA and Azide at 200ug/ml	20 ug
914-RBM7-P1	Purified Ab with BSA and Azide at 200ug/ml	100 ug
914-RBM7-P1ABX	Purified Ab WITHOUT BSA or Azide at 1.0mg/ml	100 ug

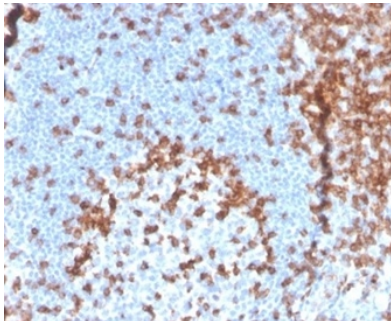
Applications	Tested Dillution	Note
Immunohistochemistry (IHC)	1-2ug/ml	30 min at RT. Staining of formalin-fixed tissues requires heating tissue sections in 10mM Tris with 1mM EDTA, pH 9.0, for 45 min at 95°C followed by cooling at RT for 20 minutes
Western Blot (WB)	2-4ug/ml	

### Product Details

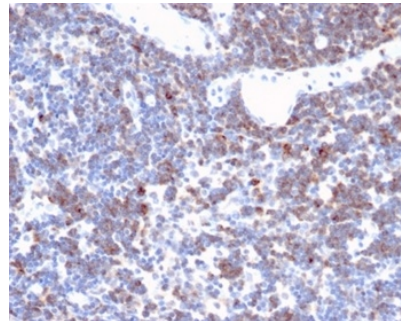
<b>Clone</b>	LFA2/3417R
<b>Immunogen</b>	Recombinant fragment (around aa246-348) of the human CD2 protein (exact sequence is proprietary)
<b>Host</b>	Rabbit
<b>Clonality</b>	Monoclonal
<b>Isotype / Light Chain</b>	IgG / Kappa
<b>Mol. Weight of Antigen</b>	39.45kDa
<b>Cellular Localization</b>	Cell membrane
<b>Species Reactivity</b>	Human
<b>Positive Control</b>	Human tonsil, Spleen or lymph node.

\*Optimal dilution for a specific application should be determined.

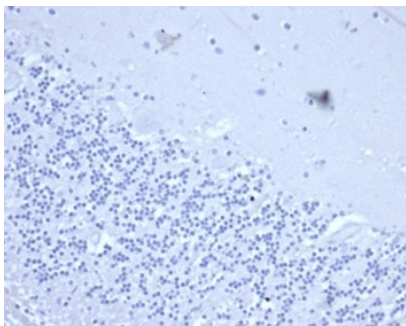
### Product Images for Recombinant CD2 / Lymphocyte Function Antigen 2 (LFA-2) Antibody



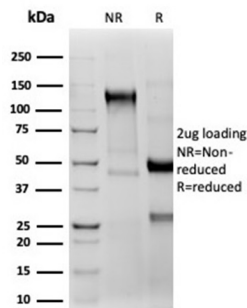
Formalin-fixed, paraffin-embedded human tonsil stained with CD2 Recombinant Rabbit Monoclonal Antibody (LFA2/3417R) at 2ug/ml. HIER: Tris/EDTA, pH9.0, 45min. 2 °: HRP-polymer, 30min. DAB, 5min.



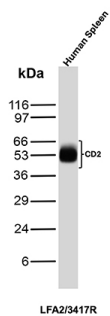
Formalin-fixed, paraffin-embedded human lymph node stained with CD2 Recombinant Rabbit Monoclonal Antibody (LFA2/3417R). HIER: Tris/EDTA, pH9.0, 45min. 2 °: HRP-polymer, 30min. DAB, 5min.



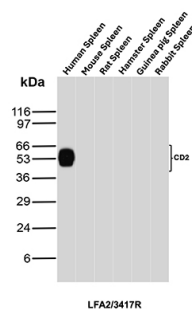
IHC analysis of formalin-fixed, paraffin-embedded human brain. Negative tissue control using LFA2/3417R at 2ug/ml in PBS for 30min RT. HIER: Tris/EDTA, pH9.0, 45min. 2 °: HRP-polymer, 30min. DAB, 5min.



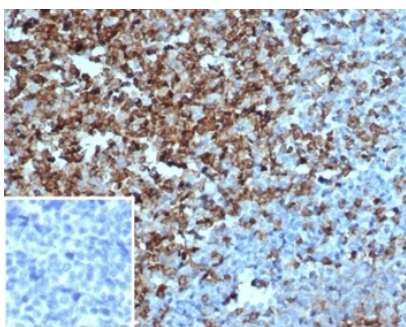
SDS-PAGE Analysis Purified CD2 Recombinant Rabbit Monoclonal Antibody (LFA2/3417R). Confirmation of Purity and Integrity of Antibody.



Western Blot Analysis of Human Spleen tissue lysate using CD2 Recombinant Rabbit Monoclonal Antibody (LFA2/3417R).



Western Blot Analysis of Spleen tissue lysates of different species using CD2 Recombinant Rabbit Monoclonal Antibody (LFA2/3417R).



Formalin-fixed, paraffin-embedded human tonsil stained with CD2 Recombinant Rabbit Monoclonal Antibody (LFA2/3417R). Inset: PBS instead of primary antibody; secondary only negative control.

### Specificity & Comments

CD2 is mainly present on the surface of mature T cells and NK cell membranes, while B cells are usually not expressed. It can be used to label the diagnosis and study of normal T cells and their associated tumors, such as pre-t cell lymphoma, marginal T cell lymphoma and anaplastic cell lymphoma. CD2 antibody is useful for identification of precursor and mature T-cell lymphomas. Aberrant loss of CD2 in T-cell lymphomas may help to distinguish them from reactive T-cell proliferations.

### Limitations and Warranty

This antibody is available for research use only and is not approved for use in diagnosis. There are no warranties, expressed or implied, which extend beyond this description. Company is not liable for any personal injury or economic loss resulting from this product.

### Supplied As

200ug/ml of Ab produced in a mammalian-based expression system. Prepared in 10mM PBS with 0.05% BSA & 0.05% azide. Also available WITHOUT BSA & azide at 1.0mg/ml.

### Storage and Stability

Antibody with azide - store at 2 to 8 °C. Antibody without azide - store at -20 to -80 °C. Antibody is stable for 24 months. Non-hazardous. No MSDS required.