

Cyclin B2 Antibody

Mouse Monoclonal Antibody [Clone X29.2]

Catalog No	Format	Size
9133-MSM1-P0	Purified Ab with BSA and Azide	200ug/ml
9133-MSM1-P1	Purified Ab with BSA and Azide	200ug/ml
9133-MSM1-P1ABX	Purified Ab WITHOUT BSA and Azide	1.0mg/ml

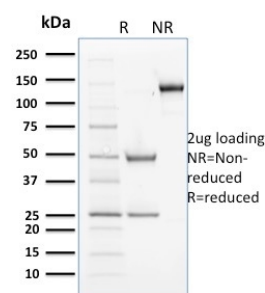
Applications	Tested Dillution
--------------	------------------

Product Details

Clone	X29.2
Gene Name	CCNB2
Immunogen	Recombinant full-length Xenopus laevis Cyclin B2 protein
Host	Mouse
Clonality	Monoclonal
Isotype / Light Chain	IgG1 / Kappa
Mol. Weight of Antigen	51kDa
Species Reactivity	Human, Mouse, Rat, Xenopus Laevis
Positive Control	HeLa cells. Human cervical tissue (IHC).

**Optimal dilution for a specific application should be determined.*

Product Images for Cyclin B2 Antibody



SDS-PAGE Analysis of Purified Cyclin B2 Mouse Monoclonal Antibody (X29.2).
Confirmation of Purity and Integrity of Antibody.

Specificity & Comments

In eukaryotic cells, mitosis is initiated following the activation of a protein kinase known variously as maturation-promoting factor, M phase specific histone kinase or M-phase kinase. This protein kinase is composed of a catalytic subunit (Cdc2), a regulatory subunit (cyclin B) and a low molecular weight subunit (p13-Suc1). The Cdc/cyclin enzyme is subject to multiple levels of control, of which the regulation of the catalytic subunit by tyrosine phosphorylation is the best understood. Tyrosine phosphorylation inhibits the Cdc2/ cyclin B enzyme, and tyrosine dephosphorylation, occurring at the onset of mitosis, directly activates the pre-MPF complex. Evidence has established that B type cyclins not only act on M phase regulatory subunits of the Cdc2 protein kinase, but also activate the Cdc25A and Cdc25B endogenous tyrosine phosphatase, of which Cdc2 is the physiological substrate. The two B type cyclins, cyclin B1 and cyclin B2, have been shown to have distinct tissue distributions.

Known Applications & Suggested Dilutions

ELISA (For coating, order antibody without BSA) | Optimal dilution for a specific application should be determined.

Supplied As

200ug/ml of Ab Purified from Bioreactor Concentrate by Protein A/G. Prepared in 10mM PBS with 0.05% BSA & 0.05% azide. Also available WITHOUT BSA & azide at 1.0mg/ml.

Storage and Stability

Antibody with azide - store at 2 to 8°C. Antibody without azide - store at -20 to -80°C. Antibody is stable for 24 months. Non-hazardous. No MSDS required.

Limitations and Warranty

This antibody is available for research use only and is not approved for use in diagnosis.

There are no warranties, expressed or implied, which extend beyond this description. Company is not liable for any personal injury or economic loss resulting from this product.
