

CD1c Antibody

Mouse Monoclonal Antibody [Clone CD1C/1603]

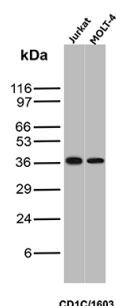
Catalog No	Format	Size
911-MSM1-P0	Purified Ab with BSA and Azide at 200ug/ml	20 ug
911-MSM1-P1	Purified Ab with BSA and Azide at 200ug/ml	100 ug
911-MSM1-P1ABX	Purified Ab WITHOUT BSA and Azide at 1.0mg/ml	100 ug

Applications	Tested Dillution	Note
Western Blot (WB)	2-4ug/ml	

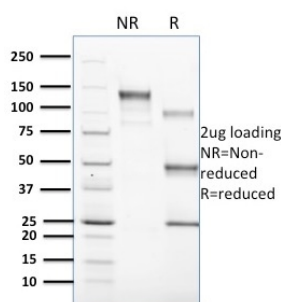
Product Details	
Clone	CD1C/1603
Gene Name	CD1C
Immunogen	Recombinant full-length human CD1c protein
Host	Mouse
Clonality	Monoclonal
Isotype / Light Chain	IgG1 / Kappa
Mol. Weight of Antigen	43kDa
Cellular Localization	Cell membrane, Endosome membrane, Lysosome
Species Reactivity	Human
Positive Control	Expressed on cortical thymocytes, on certain T-cell leukemias and in various other tissues, Jurkat, MOLT-4

**Optimal dilution for a specific application should be determined.*

Product Images for CD1c Antibody



Western blot analysis of Jurkat and MOLT-4 cell lysates using CD1c Mouse Monoclonal Antibody (CD1C/1603).



SDS-PAGE Analysis of Purified CD1c Mouse Monoclonal Antibody (CD1C/1603). Confirmation of Purity and Integrity of Antibody.

Specificity & Comments

The CD1 multigene family encodes five forms of the CD1 T-cell surface glycoprotein in human, designated CD1A, 1B, 1C, 1D and 1E. CD1, a type 1 membrane protein, has structural similarity to the MHC class I antigen and has been shown to present lipid antigens for recognition by T lymphocytes. CD1 antigens are associated with - 2-Microglobulin and expressed on cortical thymocytes, Langerhans cells, a B cell subset and some dendritic cells. Specifically, CD1A is a marker for Langerhans cell histiocytosis (LCH) and is found on interdigitating cells. Adaptor-protein complexes and CD1-associated chaperones control CD1 trafficking, and the development and activation of CD1-restricted T cells. Constitutive endocytosis of CD1B molecules and the differential sorting of MHC class II from lysosomes separate peptide- and lipid antigen-presenting molecules during dendritic cell maturation. CD1B is also expressed in interdigitating cells. The human CD1 genes are all closely linked in a cluster mapping at chromosome 1q23.1

Limitations and Warranty

This antibody is available for research use only and is not approved for use in diagnosis. There are no warranties, expressed or implied, which extend beyond this description. Company is not liable for any personal injury or economic loss resulting from this product.

Supplied As

200ug/ml of Ab Purified from Bioreactor Concentrate by Protein A/G. Prepared in 10mM PBS with 0.05% BSA & 0.05% azide. Also available WITHOUT BSA & azide at 1.0mg/ml.

Storage and Stability

Antibody with azide - store at 2 to 8°C. Antibody without azide - store at -20 to -80°C. Antibody is stable for 24 months. Non-hazardous. No MSDS required.

Research Areas

Immunology, B Cell Markers, Dendritic Cell Marker, Hematopoietic Stem Cells
