

CD1a / HTA1 (Mature Langerhans Cells Marker) Antibody

Mouse Monoclonal Antibody [Clone C1A/3249]

Catalog No	Format	Size
909-MSM9-P0	Purified Ab with BSA and Azide at 200ug/ml	20 ug
909-MSM9-P1	Purified Ab with BSA and Azide at 200ug/ml	100 ug
909-MSM9-P1ABX	Purified Ab WITHOUT BSA and Azide at 1.0mg/ml	100 ug

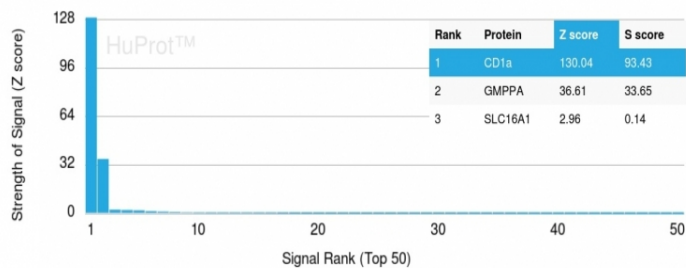
Applications	Tested Dillution	Note
Western Blot (WB)	2-4ug/ml	

Product Details

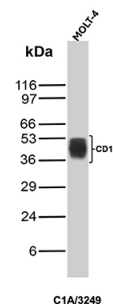
Clone	C1A/3249
Gene Name	CD1A
Immunogen	Recombinant fragment (around aa43-173) of human CD1A protein (exact sequence is proprietary)
Host	Mouse
Clonality	Monoclonal
Isotype / Light Chain	IgG2b / Kappa
Mol. Weight of Antigen	49kDa
Cellular Localization	Cell membrane, Endosome membrane, Membrane raft
Species Reactivity	Human
Positive Control	MOLT-4 cells. Paracortex in a tonsil or a reactive lymph node or skin.

*Optimal dilution for a specific application should be determined.

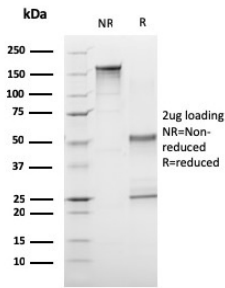
Product Images for CD1a / HTA1 (Mature Langerhans Cells Marker) Antibody



Analysis of Protein Array containing more than 19,000 full-length human proteins using CD1a Mouse Monoclonal Antibody (C1A/3249). Z- and S- Score: The Z-score represents the strength of a signal that a monoclonal antibody (MAb) (in combination with a fluorescently-tagged anti-IgG secondary antibody) produces when binding to a particular protein on the HuProt™ array. Z-scores are described in units of standard deviations (SD's) above the mean value of all signals generated on that array. If targets on HuProt™ are arranged in descending order of the Z-score, the S-score is the difference (also in units of SD's) between the Z-score. S-score therefore represents the relative target specificity of a MAb to its intended target. A MAb is considered to specific to its intended target, if the MAb has an S-score of at least 2.5. For example, if a MAb binds to protein X with a Z-score of 43 and to protein Y with a Z-score of 14, then the S-score for the binding of that MAb to protein X is equal to 29.



Western blot analysis of MOLT-4 cell lysate using CD1a Mouse Monoclonal Antibody (C1A/3249).



SDS-PAGE Analysis of Purified CD1a Mouse Monoclonal Antibody (C1A/3249).
Confirmation of Purity and Integrity of Antibody.

Specificity & Comments

At least five CD1 genes (CD1a, b, c, d, and e) are identified. CD1 proteins have been demonstrated to restrict T cell response to non-peptide lipid and glycolipid antigens and play a role in non-classical antigen presentation. CD1a is a non-polymorphic MHC Class 1 related cell surface glycoprotein, expressed in association with Beta-2 microglobulin. Anti-CD1a labels Langerhans cell histiocytosis (Histiocytosis X), extranodal histiocytic sarcoma, a subset of T-lymphoblastic lymphoma/leukemia, and interdigitating dendritic cell sarcoma of the lymph node. When combined with antibodies against TTF-1 and CD5, anti-CD1a is useful in distinguishing between pulmonary and thymic neoplasms since CD1a is consistently expressed in thymic lymphocytes in both typical and atypical thymomas, but only focally in 1/6 of thymic carcinomas and not in lymphocytes in pulmonary neoplasms. Anti-CD1a is reported to be a new marker for perivascular epithelial cell tumor (PEComa).

Limitations and Warranty

This antibody is available for research use only and is not approved for use in diagnosis. There are no warranties, expressed or implied, which extend beyond this description. Company is not liable for any personal injury or economic loss resulting from this product.

Supplied As

200ug/ml of Ab Purified from Bioreactor Concentrate by Protein A/G. Prepared in 10mM PBS with 0.05% BSA & 0.05% azide. Also available WITHOUT BSA & azide at 1.0mg/ml.

Storage and Stability

Antibody with azide - store at 2 to 8°C. Antibody without azide - store at -20 to -80°C. Antibody is stable for 24 months. Non-hazardous. No MSDS required.

Research Areas

Immunology, Dendritic Cell Marker