

## CD1a / HTA1 (Mature Langerhans Cells Marker) Antibody

Mouse Monoclonal Antibody [Clone CB-T6]

| Catalog No     | Format  | Size   |
|----------------|---|--------|
| 909-MSM5-P0    | Purified Ab with BSA and Azide at 200ug/ml    | 20 ug  |
| 909-MSM5-P1    | Purified Ab with BSA and Azide at 200ug/ml    | 100 ug |
| 909-MSM5-P1ABX | Purified Ab WITHOUT BSA and Azide at 1.0mg/ml | 100 ug |

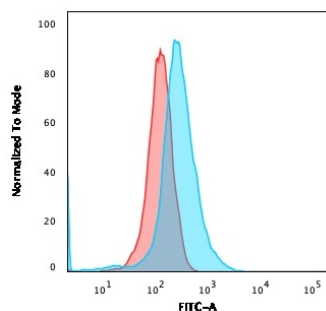
| Applications            | Tested Dillution    | Note |
|-------------------------|---------------------|------|
| Flow Cytometry (Flow)   | 1-2ug/million cells |      |
| Immunofluorescence (IF) | 1-3ug/ml            |      |

### Product Details

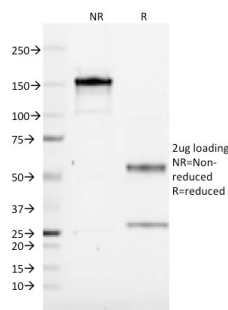
|                               |  |
|-------------------------------|--|
| <b>Clone</b>                  | CB-T6  |
| <b>Gene Name</b>              | CD1A   |
| <b>Immunogen</b>              | Human CD1a   |
| <b>Host</b>                   | Mouse  |
| <b>Clonality</b>              | Monoclonal   |
| <b>Isotype / Light Chain</b>  | IgG2b / Kappa  |
| <b>Mol. Weight of Antigen</b> | 49kDa  |
| <b>Cellular Localization</b>  | Cell membrane, Endosome membrane, Membrane raft                |
| <b>Species Reactivity</b>     | Human, Mouse   |
| <b>Positive Control</b>       | MOLT-4 cells. Paracortex in a tonsil or a reactive lymph node. |

\*Optimal dilution for a specific application should be determined.

### Product Images for CD1a / HTA1 (Mature Langerhans Cells Marker) Antibody



Flow Cytometric Analysis of MOLT-4 cells using CD1a Mouse Monoclonal Antibody (CB-T6) followed by goat anti-Mouse IgG-CF488 (Blue); Isotype control (Red).



SDS-PAGE Analysis of Purified CD1a Mouse Monoclonal Antibody (CB-T6). Confirmation of Integrity and Purity of Antibody.

### **Specificity & Comments**

At least five CD1 genes (CD1a, b, c, d, and e) are identified. CD1 proteins have been demonstrated to restrict T cell response to non-peptide lipid and glycolipid antigens and play a role in non-classical antigen presentation. CD1a is a non-polymorphic MHC Class 1 related cell surface glycoprotein, expressed in association with Beta-2 microglobulin. Anti-CD1a labels Langerhans cell histiocytosis (Histiocytosis X), extranodal histiocytic sarcoma, a subset of T-lymphoblastic lymphoma/leukemia, and interdigitating dendritic cell sarcoma of the lymph node. When combined with antibodies against TTF-1 and CD5, anti-CD1a is useful in distinguishing between pulmonary and thymic neoplasms since CD1a is consistently expressed in thymic lymphocytes in both typical and atypical thymomas, but only focally in 1/6 of thymic carcinomas and not in lymphocytes in pulmonary neoplasms. Anti-CD1a is reported to be a new marker for perivascular epithelial cell tumor (PEComa).

---

### **Limitations and Warranty**

This antibody is available for research use only and is not approved for use in diagnosis. There are no warranties, expressed or implied, which extend beyond this description. Company is not liable for any personal injury or economic loss resulting from this product.

---

### **Supplied As**

200ug/ml of Ab Purified from Bioreactor Concentrate by Protein A/G. Prepared in 10mM PBS with 0.05% BSA & 0.05% azide. Also available WITHOUT BSA & azide at 1.0mg/ml.

---

### **Storage and Stability**

Antibody with azide - store at 2 to 8°C. Antibody without azide - store at -20 to -80°C. Antibody is stable for 24 months. Non-hazardous. No MSDS required.

---

### **Research Areas**

Dendritic Cell Marker, Immunology

---