

Recombinant Cyclin E (G1/S-Phase Cyclin) Antibody

Rabbit Monoclonal Antibody [Clone CCNE1/4935R]

Catalog No	Format	Size
898-RBM5-P0	Purified Ab with BSA and Azide at 200ug/ml	20 ug
898-RBM5-P1	Purified Ab with BSA and Azide at 200ug/ml	100 ug
898-RBM5-P1ABX	Purified Ab WITHOUT BSA or Azide at 1.0mg/ml	100 ug

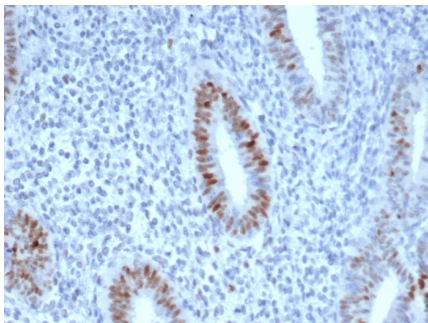
Applications	Tested Dillution	Note
Immunohistochemistry (IHC)	1-2ug/ml	30 min at RT. Staining of formalin-fixed tissues requires heating tissue sections in 10mM Tris with 1mM EDTA, pH 9.0, for 45 min at 95°C followed by cooling at RT for 20 minutes
Western Blot (WB)	2-4ug/ml	

Product Details

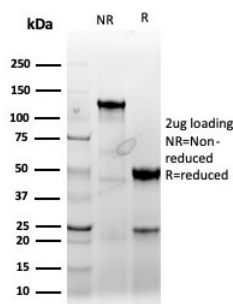
Clone	CCNE1/4935R
Immunogen	Recombinant fragment (around aa10-176) of the human Cyclin E protein (exact sequence is proprietary)
Host	Rabbit
Clonality	Monoclonal
Isotype / Light Chain	IgG / Kappa
Mol. Weight of Antigen	47.08kDa
Cellular Localization	Nucleus
Species Reactivity	Human
Positive Control	HCT116, MCF7, HeLa. Human breast or colon carcinoma., Jurkat

*Optimal dilution for a specific application should be determined.

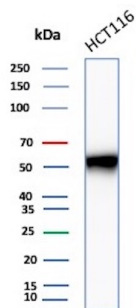
Product Images for Recombinant Cyclin E (G1/S-Phase Cyclin) Antibody



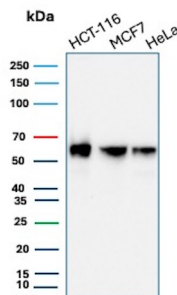
Formalin-fixed, paraffin-embedded human endometrium stained with Cyclin E Recombinant Rabbit Monoclonal Antibody (CCNE1/4935R).



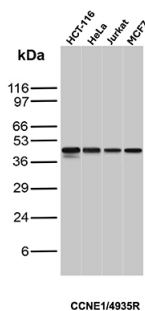
SDS-PAGE Analysis of Purified Cyclin E Recombinant Rabbit Monoclonal Antibody (CCNE1/4935R). Confirmation of Purity and Integrity of Antibody.



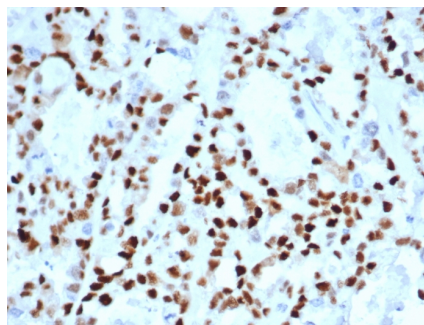
Western Blot Analysis of HCT-116 cell lysate using Cyclin E Recombinant Rabbit Monoclonal Antibody (CCNE1/4935R).



Western Blot Analysis of HCT-116, MCF7 and HeLa cell lysates using Cyclin E Recombinant Rabbit Monoclonal Antibody (CCNE1/4935R).



Western Blot Analysis of HCT-116, HeLa, Jurkat and MCF7 cell lysates using Cyclin E Recombinant Rabbit Monoclonal Antibody (CCNE1/4935R).



Formalin-fixed, paraffin-embedded human ovarian carcinoma stained with Cyclin E Recombinant Rabbit Monoclonal Antibody (CCNE1/4935R).

Specificity & Comments

Cyclin E belongs to the highly conserved cyclin family, whose members exhibit distinct expression and degradation patterns which contribute to the temporal coordination of each mitotic event. Cyclins function as regulators of CDK kinases. Cyclin E forms a complex with and functions as a regulatory subunit of CDK2, whose activity is required for cell cycle G1/S transition. Cyclin E accumulates at the G1-S phase boundary and is degraded as cells progress through S phase. Cyclin E overexpression has been observed in many tumors, which results in chromosome instability, and thus may contribute to tumorigenesis.

Limitations and Warranty

This antibody is available for research use only and is not approved for use in diagnosis. There are no warranties, expressed or implied, which extend beyond this description. Company is not liable for any personal injury or economic loss resulting from this product.

Supplied As

200ug/ml of Ab produced in a mammalian-based expression system. Prepared in 10mM PBS with 0.05% BSA & 0.05% azide. Also available WITHOUT BSA & azide at 1.0mg/ml.

Storage and Stability

Antibody with azide - store at 2 to 8 °C. Antibody without azide - store at -20 to -80 °C. Antibody is stable for 24 months. Non-hazardous. No MSDS required.