

## Cyclin E (G1/S-Phase Cyclin) Antibody

Mouse Monoclonal Antibody [Clone CCNE1/2460]

Catalog No	Format	Size
898-MSM1-P0	Purified Ab with BSA and Azide at 200ug/ml	20 ug
898-MSM1-P1	Purified Ab with BSA and Azide at 200ug/ml	100 ug
898-MSM1-P1ABX	Purified Ab WITHOUT BSA and Azide at 1.0mg/ml	100 ug

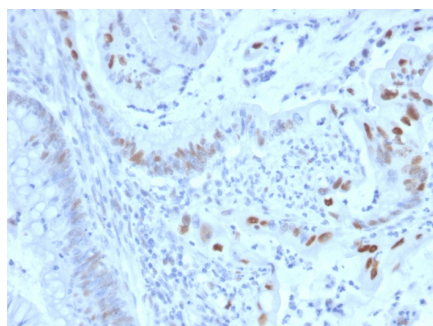
Applications	Tested Dillution	Note
Flow Cytometry (Flow)	1-2ug/million cells	
Immunofluorescence (IF)	1-3ug/ml	
Immunohistochemistry (IHC)	1-2ug/ml	30 min at RT. Staining of formalin-fixed tissues requires heating tissue sections in 10mM Tris with 1mM EDTA, pH 9.0, for 45 min at 95°C followed by cooling at RT for 20 minutes
Western Blot (WB)	2-4ug/ml	

### Product Details

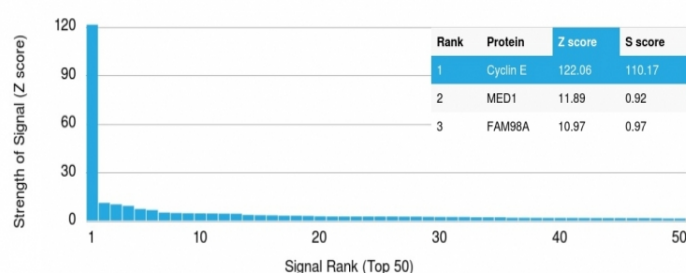
<b>Clone</b>	CCNE1/2460
<b>Gene Name</b>	CCNE1
<b>Immunogen</b>	Recombinant human Cyclin E (CCNE1) protein fragment (around aa 10-176) (exact sequence is proprietary)
<b>Host</b>	Mouse
<b>Clonality</b>	Monoclonal
<b>Isotype / Light Chain</b>	IgG2b / Kappa
<b>Mol. Weight of Antigen</b>	53kDa
<b>Cellular Localization</b>	Nucleus
<b>Species Reactivity</b>	Human
<b>Positive Control</b>	Jurkat, HCT-116, MCF-7 or HeLa cells. Human breast or colon carcinoma.

\*Optimal dilution for a specific application should be determined.

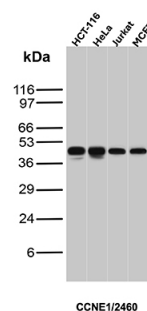
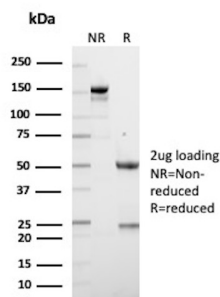
### Product Images for Cyclin E (G1/S-Phase Cyclin) Antibody



Formalin-fixed, paraffin-embedded human colon carcinoma stained with Cyclin E Mouse Monoclonal Antibody (CCNE1/2460).

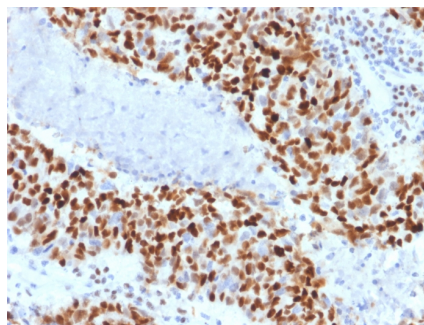
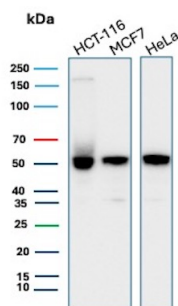


Analysis of Protein Array containing more than 19,000 full-length human proteins using Cyclin E Mouse Monoclonal Antibody (CCNE1/2460). Z- and S- Score: The Z-score represents the strength of a signal that a monoclonal antibody (MAb) (in combination with a fluorescently-tagged anti-IgG secondary antibody) produces when binding to a particular protein on the HuProt™ array. Z-scores are described in units of standard deviations (SD's) above the mean value of all signals generated on that array. If targets on HuProt™ are arranged in descending order of the Z-score, the S-score is the difference (also in units of SD's) between the Z-score. S-score therefore represents the relative target specificity of a MAb to its intended target. A MAb is considered to specific to its intended target, if the MAb has an S-score of at least 2.5. For example, if a MAb binds to protein X with a Z-score of 43 and to protein Y with a Z-score of 14, then the S-score for the binding of that MAb to protein X is equal to 29.



SDS-PAGE Analysis of Purified Cyclin E Mouse Monoclonal Antibody (CCNE1/2460). Confirmation of Purity and Integrity of Antibody.

Western Blot Analysis of HCT-116, HeLa, Jurkat and MCF7 cell lysates using Cyclin E (LOT B) Mouse Monoclonal Antibody (CCNE1/2460).



Western Blot Analysis of HCT-116, MCF7 and HeLa cell lysates using Cyclin E Mouse Monoclonal Antibody (CCNE1/2460).

Formalin-fixed, paraffin-embedded human colon carcinoma stained with Cyclin E Mouse Monoclonal Antibody (CCNE1/2460).

## Specificity & Comments

Cyclin E belongs to the highly conserved cyclin family, whose members exhibit distinct expression and degradation patterns which contribute to the temporal coordination of each mitotic event. Cyclins function as regulators of CDK kinases. Cyclin E forms a complex with and functions as a regulatory subunit of CDK2, whose activity is required for cell cycle G1/S transition. Cyclin E accumulates at the G1-S phase boundary and is degraded as cells progress through S phase. Cyclin E overexpression has been observed in many tumors, which results in chromosome instability, and thus may contribute to tumorigenesis.

## Supplied As

200ug/ml of Ab purified from Bioreactor Concentrate by Protein A/G. Prepared in 10mM PBS with 0.05% BSA & 0.05% azide. Also available WITHOUT BSA & azide at 1.0mg/ml.

## Storage and Stability

Antibody with azide - store at 2 to 8 °C. Antibody without azide - store at -20 to -80 °C. Antibody is stable for 24 months. Non-hazardous. No MSDS required.

## Research Areas

Cardiovascular, Infectious Disease, Lung Cancer, Nuclear Marker, Signal Transduction, Transcription Factors

## Limitations and Warranty

This antibody is available for research use only and is not approved for use in diagnosis. There are no warranties, expressed or implied, which extend beyond this description. Company is not liable for any personal injury or economic loss resulting from this product.