

Recombinant BCL10 (MALT-Lymphoma Marker) Antibody

Mouse Monoclonal Antibody [Clone rBL10/411]

Catalog No	Format	Size
8915-MSM4-P0	Purified Ab with BSA and Azide at 200ug/ml	20 ug
8915-MSM4-P1	Purified Ab with BSA and Azide at 200ug/ml	100 ug
8915-MSM4-P1ABX	Purified Ab WITHOUT BSA or Azide at 1.0mg/ml	100 ug

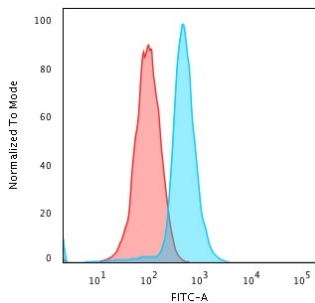
Applications	Tested Dillution	Note
Immunohistochemistry (IHC)	1-2ug/ml	30 min at RT. Staining of formalin-fixed tissues requires heating tissue sections in 10mM Tris with 1mM EDTA, pH 9.0, for 45 min at 95°C followed by cooling at RT for 20 minutes
Western Blot (WB)	2-4ug/ml	

Product Details

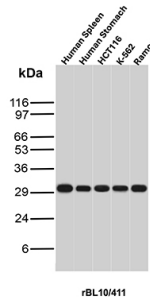
Clone	rBL10/411
Immunogen	Recombinant fragment (around aa122-168) of the human BCL-10 protein (exact sequence is proprietary)
Host	Mouse
Clonality	Monoclonal
Isotype / Light Chain	IgG1 / Kappa
Mol. Weight of Antigen	26.25kDa
Cellular Localization	Cytoplasm, Membrane raft, Perinuclear region
Species Reactivity	Human
Positive Control	Human Spleen, Human Stomach, HCT116, K-562 or Ramos. Human lymphoma.

*Optimal dilution for a specific application should be determined.

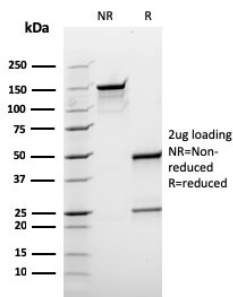
Product Images for Recombinant BCL10 (MALT-Lymphoma Marker) Antibody



Flow Cytometric Analysis of PFA-fixed K562 cells using BCL10 Recombinant Mouse Monoclonal Antibody (rBL10/411) followed by Goat anti-mouse IgG-CF488 (Blue); Isotype Control (Red),



Western Blot Analysis of Human Spleen, Human Stomach, HCT116, K-562 and Ramos lysates using BCL10 Recombinant Mouse Monoclonal Antibody (rBL10/411).



SDS-PAGE Analysis of Purified BCL10 Recombinant Mouse Monoclonal Antibody (rBL10/411). Confirmation of Purity and Integrity of Antibody.

Specificity & Comments

BCL10, with an N-terminal caspase recruitment domain (CARD), is found in a number of apoptotic regulatory molecules. It was identified through its direct involvement in t(1;14) of mucosa-associated lymphoid tissue (MALT) lymphoma. Expression of BCL10 was shown to induce NF14 translocation, while 55% of MALT lymphomas lacking this translocation exhibited the same labeling pattern, although at a much lower level.

Supplied As

200ug/ml of Ab produced in a mammalian-based expression system. Prepared in 10mM PBS with 0.05% BSA & 0.05% azide. Also available WITHOUT BSA & azide at 1.0mg/ml.

Storage and Stability

Antibody with azide - store at 2 to 8 °C. Antibody without azide - store at -20 to -80 °C. Antibody is stable for 24 months. Non-hazardous. No MSDS required.

Limitations and Warranty

This antibody is available for research use only and is not approved for use in diagnosis. There are no warranties, expressed or implied, which extend beyond this description. Company is not liable for any personal injury or economic loss resulting from this product.