

Recombinant p40 (deltaNp63) (Squamous, Basal & Myoepithelial Cell Marker) Antibody

Rabbit Monoclonal Antibody [Clone TP63/1423R]

Catalog No	Format	Size
8626-RBM3-P0	Purified Ab with BSA and Azide at 200ug/ml	20 ug
8626-RBM3-P1	Purified Ab with BSA and Azide at 200ug/ml	100 ug
8626-RBM3-P1ABX	Purified Ab WITHOUT BSA or Azide at 1.0mg/ml	100 ug

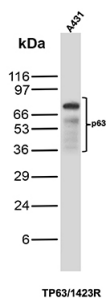
Applications	Tested Dillution	Note
Immunohistochemistry (IHC)	1-2ug/ml	30 min at RT. Staining of formalin-fixed tissues requires heating tissue sections in 10mM Tris with 1mM EDTA, pH 9.0, for 45 min at 95°C followed by cooling at RT for 20 minutes
Western Blot (WB)	2-4ug/ml	

Product Details

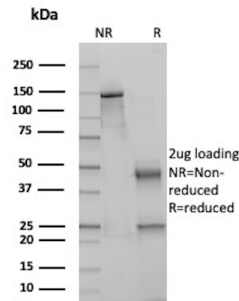
Clone	TP63/1423R
Immunogen	Recombinant fragment of the human p63 protein (exact sequence is proprietary)
Host	Rabbit
Clonality	Monoclonal
Isotype / Light Chain	IgG / Kappa
Mol. Weight of Antigen	76.78kDa
Cellular Localization	Nucleus
Species Reactivity	Human
Positive Control	HEK293 cells. Prostate Carcinoma or Lung or bladder squamous cell carcinoma, A431

*Optimal dilution for a specific application should be determined.

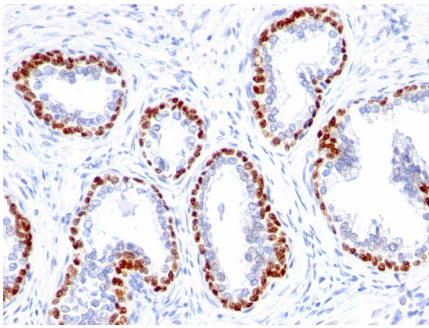
Product Images for Recombinant p40 (deltaNp63) (Squamous, Basal & Myoepithelial Cell Marker) Antibody



Western Blot analysis of A431 lysate using p63 Recombinant Rabbit Monoclonal Antibody (TP63/1423R).



SDS-PAGE Analysis of Purified Tumor protein 63 Recombinant Rabbit Monoclonal Antibody (TP63/1423R). Confirmation of Purity and Integrity of Antibody.



Formalin-fixed, paraffin-embedded human Prostate Cancer stained with p63 Rabbit Monoclonal Antibody (TP63/1423R).

Specificity & Comments

p63 is a homolog of the tumor suppressor p53. It is identified in basal cells in the epithelial layers of a variety of tissues, including epidermis, cervix, urothelium, breast and prostate. p63 was detected in nuclei of the basal epithelium in normal prostate glands; however, it was not expressed in malignant tumors of the prostate. As a result, p63 has been reported as a useful marker for differentiating benign from malignant lesions in the prostate, particularly when used in combination with markers of high molecular weight cytokeratins and the prostate-specific marker AMACR (P504S). p63 has also been shown to be a sensitive marker for lung squamous cell carcinomas (SqCC), with a sensitivity of ~90%. Specificity for lung SqCC, vs. lung adenocarcinoma (LADC), is approximately 80%. In breast tissue, p63 has been identified in myoepithelial cells of normal ducts.

Limitations and Warranty

This antibody is available for research use only and is not approved for use in diagnosis. There are no warranties, expressed or implied, which extend beyond this description. Company is not liable for any personal injury or economic loss resulting from this product.

Supplied As

200ug/ml of Ab produced in a mammalian-based expression system. Prepared in 10mM PBS with 0.05% BSA & 0.05% azide. Also available WITHOUT BSA & azide at 1.0mg/ml.

Storage and Stability

Antibody with azide - store at 2 to 8 °C. Antibody without azide - store at -20 to -80 °C. Antibody is stable for 24 months. Non-hazardous. No MSDS required.