

Recombinant p40 (Squamous, Basal & Myoepithelial Cell Marker) Antibody

Rabbit Monoclonal Antibody [Clone P40/4396R]

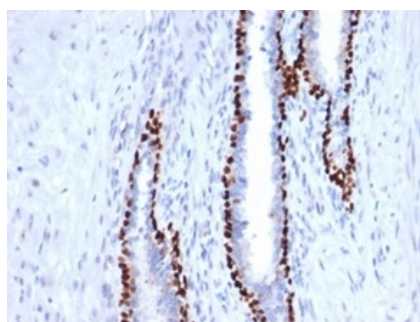
Catalog No	Format	Size
8626-RBM14-P0	Purified Ab with BSA and Azide at 200ug/ml	20 ug
8626-RBM14-P1	Purified Ab with BSA and Azide at 200ug/ml	100 ug
8626-RBM14-P1ABX	Purified Ab WITHOUT BSA and Azide at 1.0mg/ml	100 ug

Applications	Tested Dillution	Note
Flow Cytometry (Flow)	1-2ug/million cells	
Immunohistochemistry (IHC)	1-2ug/ml	30 min at RT. Staining of formalin-fixed tissues requires heating tissue sections in 10mM Tris with 1mM EDTA, pH 9.0, for 45 min at 95°C followed by cooling at RT for 20 minutes

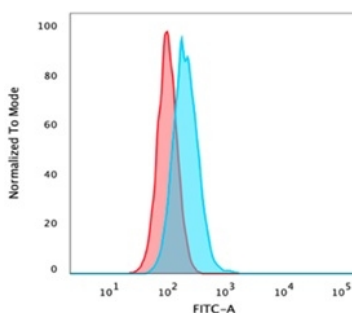
Product Details	
Clone	P40/4396R
Gene Name	TP63
Immunogen	Recombinant fragment (around aa1-100) of human p40 protein (exact sequence is proprietary)
Host	Rabbit
Clonality	Monoclonal
Isotype / Light Chain	IgG / Kappa
Mol. Weight of Antigen	63kDa
Cellular Localization	Nucleus
Species Reactivity	Human
Positive Control	HEK293, lung or bladder squamous cell carcinoma tissue., MDA-MB453 or MCF7 cells. Human prostate

**Optimal dilution for a specific application should be determined.*

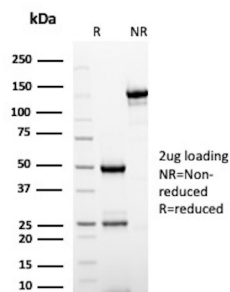
Product Images for Recombinant p40 (Squamous, Basal & Myoepithelial Cell Marker) Antibody



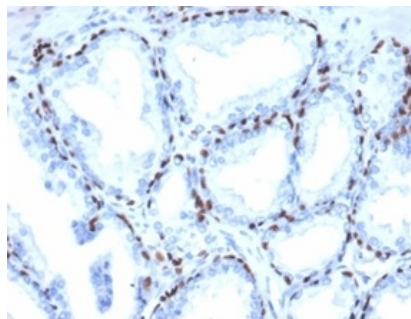
Formalin-fixed, paraffin-embedded human prostate stained with p40 Recombinant Rabbit Monoclonal Antibody (P40/4396R).



Flow cytometric analysis of PFA-fixed HeLa cells. p40 Recombinant Rabbit Monoclonal Antibody (P40/4396R) followed by goat anti-mouse IgG-CF488 (blue); isotype control (red).



SDS-PAGE Analysis of Purified Tumor protein 63 Recombinant Rabbit Monoclonal Antibody (P40/4396R). Confirmation of Purity and Integrity of Antibody.



Formalin-fixed, paraffin-embedded human prostate stained with p40 Recombinant Rabbit Monoclonal Antibody (P40/4396R).

Specificity & Comments

p40 antibody (antibody recognizing Np63 only) is an isoform of p63, is thought to function as a stem cell factor, responsible for maintaining cells in an uncommitted state with regenerative potential a role that may be recapitulated in tumors derived from these cells. p40 is normally expressed in the basal or progenitor cell layer of stratified epithelia (eg. squamous, urothelial, bronchial), basal cells of some glandular epithelia (eg. prostate), as well as myoepithelial cells of breast and salivary glands, trophoblasts and thymic epithelial cells. In tumor tissues, p40 expression is specific for squamous cell carcinoma. p40 is equivalent to p63 in sensitivity for lung squamous cell carcinoma, but it is markedly superior to p63 in specificity, which eliminates a potential pitfall of misinterpreting a p63-positive adenocarcinoma or unsuspected lymphoma as squamous cell carcinoma. p40 appears to be a more reliable marker for squamous cell carcinoma.

Supplied As

200ug/ml of Ab purified by Protein A Column. Prepared in 10mM PBS with 0.05% BSA & 0.05% azide. Also available WITHOUT BSA & azide at 1.0mg/ml.

Storage and Stability

Antibody with azide - store at 2 to 8 °C. Antibody without azide - store at -20 to -80 °C. Antibody is stable for 24 months. Non-hazardous. No MSDS required.

Research Areas

Basal Cell Marker, Nuclear Marker, Stem Cell Differentiation, Transcription Factors

Limitations and Warranty

This antibody is available for research use only and is not approved for use in diagnosis. There are no warranties, expressed or implied, which extend beyond this description. Company is not liable for any personal injury or economic loss resulting from this product.