

p63 (Squamous, Basal & Myoepithelial Cell Marker) Antibody

Mouse Monoclonal Antibody [Clone TP63/1786]

Catalog No	Format	Size
8626-MSM6-P0	Purified Ab with BSA and Azide at 200ug/ml	20 ug
8626-MSM6-P1	Purified Ab with BSA and Azide at 200ug/ml	100 ug
8626-MSM6-P1ABX	Purified Ab WITHOUT BSA and Azide at 1.0mg/ml	100 ug

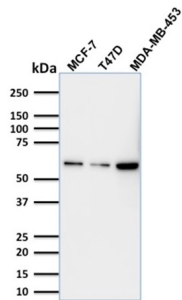
Applications	Tested Dillution	Note
Western Blot (WB)	2-4ug/ml	

Product Details

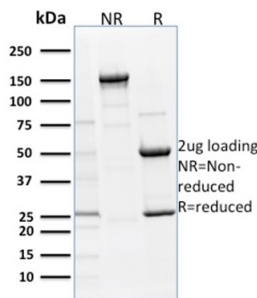
Clone	TP63/1786
Gene Name	TP63
Immunogen	Recombinant fragment (around aa 3-106) of human p63 protein (exact sequence is proprietary)
Host	Mouse
Clonality	Monoclonal
Isotype / Light Chain	IgG2b / Kappa
Mol. Weight of Antigen	63kDa
Cellular Localization	Nucleus
Species Reactivity	Human
Positive Control	HEK293 cells. Prostate Carcinoma or Lung or bladder squamous cell carcinoma.

*Optimal dilution for a specific application should be determined.

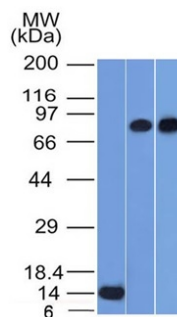
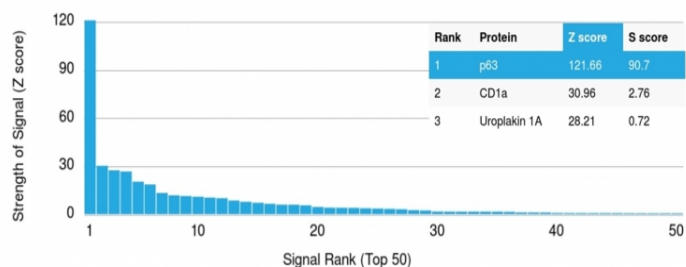
Product Images for p63 (Squamous, Basal & Myoepithelial Cell Marker) Antibody



Western Blot Analysis MCF-7; T47D and MDA-MB453 cell lysate using p63 Mouse Monoclonal Antibody (TP63/1786).



SDS-PAGE Analysis of Purified p63 Mouse Monoclonal Antibody (TP63/1786). Confirmation of Purity and Integrity of Antibody.



Western Blot of Recombinant, PC3 and HeLa cell lysates using p63 Mouse Monoclonal Antibody (TP63/1786).

Analysis of Protein Array containing >19,000 full-length human proteins using p63 Mouse Monoclonal Antibody (TP63/1786) Z- and S- Score: The Z-score represents the strength of a signal that a monoclonal antibody (MAb) (in combination with a fluorescently-tagged anti-IgG secondary antibody) produces when binding to a particular protein on the HuProt™ array. Z-scores are described in units of standard deviations (SD's) above the mean value of all signals generated on that array. If targets on HuProt™ are arranged in descending order of the Z-score, the S-score is the difference (also in units of SD's) between the Z-score. S-score therefore represents the relative target specificity of a MAb to its intended target. A MAb is considered to specific to its intended target, if the MAb has an S-score of at least 2.5. For example, if a MAb binds to protein X with a Z-score of 43 and to protein Y with a Z-score of 14, then the S-score for the binding of that MAb to protein X is equal to 29.

Specificity & Comments

p63 is a homolog of the tumor suppressor p53. It is identified in basal cells in the epithelial layers of a variety of tissues, including epidermis, cervix, urothelium, breast and prostate. p63 was detected in nuclei of the basal epithelium in normal prostate glands; however, it was not expressed in malignant tumors of the prostate. As a result, p63 has been reported as a useful marker for differentiating benign from malignant lesions in the prostate, particularly when used in combination with markers of high molecular weight cytokeratins and the prostate-specific marker AMACR (P504S). p63 has also been shown to be a sensitive marker for lung squamous cell carcinomas (SqCC), with a sensitivity of ~90%. Specificity for lung SqCC, vs. lung adenocarcinoma (LADC), is approximately 80%. In breast tissue, p63 has been identified in myoepithelial cells of normal ducts.

Limitations and Warranty

This antibody is available for research use only and is not approved for use in diagnosis. There are no warranties, expressed or implied, which extend beyond this description. Company is not liable for any personal injury or economic loss resulting from this product.

Supplied As

200ug/ml of Ab Purified from Bioreactor Concentrate by Protein A/G. Prepared in 10mM PBS with 0.05% BSA & 0.05% azide. Also available WITHOUT BSA & azide at 1.0mg/ml.

Storage and Stability

Antibody with azide - store at 2 to 8°C. Antibody without azide - store at -20 to -80°C. Antibody is stable for 24 months. Non-hazardous. No MSDS required.

Research Areas

Apoptosis, Basal Cell Marker, Cancer, Nuclear Marker, Stem Cell Differentiation, Transcription Factors