

## BAP1 (BRCA1 Associated Protein 1) Antibody

Mouse Monoclonal Antibody [Clone BAP1/2433]

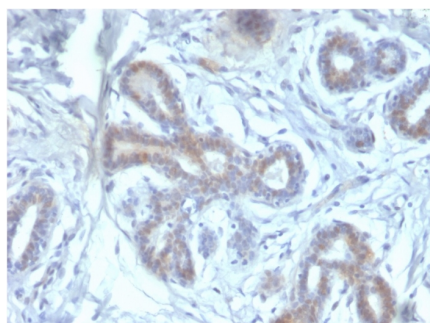
| Catalog No      | Format                            | Size     |
|-----------------|-----------------------------------|----------|
| 8314-MSM3-P0    | Purified Ab with BSA and Azide    | 200ug/ml |
| 8314-MSM3-P1    | Purified Ab with BSA and Azide    | 200ug/ml |
| 8314-MSM3-P1ABX | Purified Ab WITHOUT BSA and Azide | 1.0mg/ml |

| Applications               | Tested Dillution |
|----------------------------|------------------|
| Immunohistochemistry (IHC) | 1-2ug/ml         |

| Product Details        |   |
|------------------------|---|
| Clone                  | BAP1/2433   |
| Gene Name              | BAP1  |
| Immunogen              | Recombinant human BAP1 protein fragment (around aa 191-326) (exact sequence is proprietary) |
| Host                   | Mouse   |
| Clonality              | Monoclonal  |
| Isotype / Light Chain  | IgG   |
| Mol. Weight of Antigen | 91kDa   |
| Cellular Localization  | Cytoplasm, Nucleus  |
| Species Reactivity     | Human   |
| Positive Control       | Jurkat cell or PC-3 cell lysates. HepG2 cells. Human testis, ovaries and breast., Placenta  |

*\*Optimal dilution for a specific application should be determined.*

### Product Images for BAP1 (BRCA1 Associated Protein 1) Antibody



Formalin-fixed, paraffin-embedded human Breast carcinoma stained with BAP1 Mouse Monoclonal Antibody (BAP1/2433).

### Specificity & Comments

The BAP1 gene belongs to the ubiquitin C-terminal hydrolase subfamily of de-ubiquitination enzymes that are involved in the removal of ubiquitin from proteins. The encoded enzyme binds to the breast cancer type 1 susceptibility protein (BRCA1) via the RING finger domain of the latter and acts as a tumor suppressor. In addition, the enzyme may be involved in regulation of transcription, regulation of cell cycle and growth, response to DNA damage and chromatin dynamics. Germ line mutations in this gene may be associated with tumor predisposition syndrome (TPDS), which involves increased risk of cancers including malignant mesothelioma, Uveal melanoma and cutaneous melanoma.

---

### Research Areas

Mesenchymal Stem Cell Differentiation, Nuclear Marker

---

### Known Applications & Suggested Dilutions

Immunohistochemistry (Formalin-fixed) (1-2ug/ml for 30 min at RT)(Staining of formalin-fixed tissues requires heating tissue sections in 10mM Tris with 1mM EDTA, pH 9.0, for 45 min at 95&degC followed by cooling at RT for 20 minutes) | Optimal dilution for a specific application should be determined.

---

### Limitations and Warranty

This antibody is available for research use only and is not approved for use in diagnosis.

There are no warranties, expressed or implied, which extend beyond this description. Company is not liable for any personal injury or economic loss resulting from this product.

---

### Supplied As

200ug/ml of Ab Purified from Bioreactor Concentrate by Protein A/G. Prepared in 10mM PBS with 0.05% BSA & 0.05% azide. Also available WITHOUT BSA & azide at 1.0mg/ml.

---

### Storage and Stability

Antibody with azide - store at 2 to 8°C. Antibody without azide - store at -20 to -80°C. Antibody is stable for 24 months. Non-hazardous. No MSDS required.

---