

## PD-L2 / PDCD1LG2 / CD273 Antibody

Mouse Monoclonal Antibody [Clone PDL2/1850]

Catalog No	Format	Size
80380-MSM4-P0	Purified Ab with BSA and Azide at 200ug/ml	20 ug
80380-MSM4-P1	Purified Ab with BSA and Azide at 200ug/ml	100 ug
80380-MSM4-P1ABX	Purified Ab WITHOUT BSA and Azide at 1.0mg/ml	100 ug

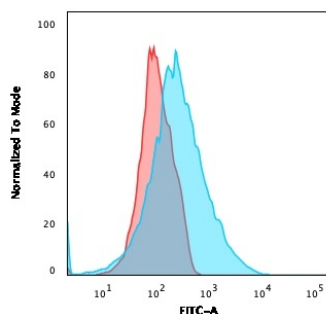
Applications	Tested Dillution	Note
Flow Cytometry (Flow)	1-2ug/million cells	

### Product Details

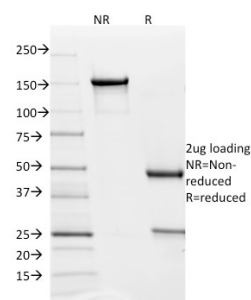
<b>Clone</b>	PDL2/1850
<b>Gene Name</b>	PDCD1LG2
<b>Immunogen</b>	Recombinant fragment (around aa 27-220) of human PD-L2 protein (exact sequence is proprietary)
<b>Host</b>	Mouse
<b>Clonality</b>	Monoclonal
<b>Isotype / Light Chain</b>	IgG1 / Kappa
<b>Mol. Weight of Antigen</b>	31kDa
<b>Cellular Localization</b>	Extracellular matrix, Extracellular space, Secreted
<b>Species Reactivity</b>	Human
<b>Positive Control</b>	Placenta or Pancreas. Thyroid Carcinoma.

\*Optimal dilution for a specific application should be determined.

### Product Images for PD-L2 / PDCD1LG2 / CD273 Antibody



Flow Cytometric Analysis of Jurkat cells using PD-L2 Mouse Monoclonal Antibody (Z64P2D3\*H4) followed by goat anti-Mouse IgG-CF488 (Blue); Isotype Control (Red).



SDS-PAGE Analysis of Purified PD-L2 Mouse Monoclonal Antibody (Z64P2D3\*H4). Confirmation of Purity and Integrity of Antibody.

### Specificity & Comments

Recognizes a protein of about 31kDa, which is identified as PD-L2 (same as PDCD1LG2). Engagement of CD28 by B7-1 (CD80) or B7-2 (CD86) in the presence of antigen promotes T cell proliferation, cytokine production, differentiation of effector T cells and the induction of Bcl-x, a promoter of T cell survival. Conversely, engagement of CTLA4 by B7-1 or B7-2 may inhibit proliferation and IL-2 production. PD-L2 does not bind CD28, cytotoxic T lymphocyte A4 or ICOS (inducible co-stimulator). The constitutive expression of PD-L1 and PD-L2 on parenchymal cells of heart, lung and kidney suggests that the Pdccl-1-Pdccl-L system could provide unique negative signaling to help prevent autoimmune disease.

### Supplied As

200ug/ml of Ab Purified from Bioreactor Concentrate by Protein A/G. Prepared in 10mM PBS with 0.05% BSA & 0.05% azide. Also available WITHOUT BSA & azide at 1.0mg/ml.

### Storage and Stability

Antibody with azide - store at 2 to 8°C. Antibody without azide - store at -20 to -80°C. Antibody is stable for 24 months. Non-hazardous. No MSDS required.

### Research Areas

Dendritic Cell Marker, Immunology, PD-1 blockade immunotherapy

## Limitations and Warranty

This antibody is available for research use only and is not approved for use in diagnosis. There are no warranties, expressed or implied, which extend beyond this description. Company is not liable for any personal injury or economic loss resulting from this product.

---