

Recombinant Caldesmon, HMW (h-Caldesmon) (Smooth Muscle Marker) Antibody

Rabbit Monoclonal Antibody [Clone CALD1/1424R]

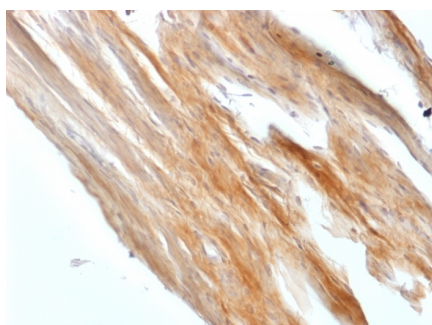
Catalog No	Format	Size
800-RBM4-P0	Purified Ab with BSA and Azide	200ug/ml
800-RBM4-P1	Purified Ab with BSA and Azide	200ug/ml
800-RBM4-P1ABX	Purified Ab WITHOUT BSA and Azide	1.0mg/ml

Applications	Tested Dilution
Western Blot (WB)	2-4ug/ml

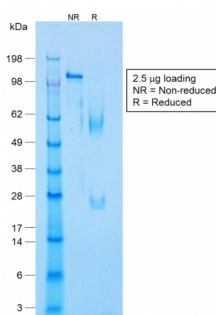
Product Details	
Clone	CALD1/1424R
Gene Name	CALD1
Immunogen	Recombinant human full-length CALD1 protein
Host	Rabbit
Clonality	Monoclonal
Isotype / Light Chain	IgG / Kappa
Mol. Weight of Antigen	150kDa
Cellular Localization	Cytoplasm, Cytoskeleton, Myofibril, Stress fiber
Species Reactivity	Human, Rat
Positive Control	Blood vessels in all tissues, ovary, smooth muscle or leiomyosarcoma, Uterus

**Optimal dilution for a specific application should be determined.*

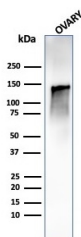
Product Images for Recombinant Caldesmon, HMW (h-Caldesmon) (Smooth Muscle Marker) Antibody



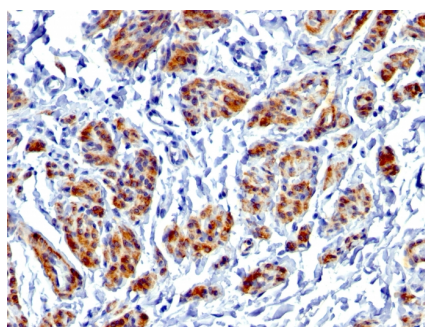
Formalin-fixed, paraffin-embedded Rat Uterus stained with Caldesmon Rabbit Recombinant Monoclonal Antibody (CALD1/1424R).



SDS-PAGE Analysis of Purified Caldesmon Rabbit Recombinant Monoclonal Antibody (CALD1/1424R). Confirmation of Integrity and Purity of Antibody.



Western Blot Analysis of human ovary tissue lysate using Caldesmon Rabbit Recombinant Monoclonal Antibody (CALD1/1424R).



Formalin-fixed, paraffin-embedded human Uterus stained with Caldesmon Rabbit Recombinant Monoclonal Antibody (CALD1/1424R).

Specificity & Comments

Recognizes a protein of 150kDa, which is identified as the high molecular weight variant of Caldesmon. Two closely related variants of human caldesmon have been identified which are different in their electrophoretic mobility and cellular distribution. The h-caldesmon variant (120 150kDa) is predominantly expressed in smooth muscle whereas l-caldesmon (70 80kDa) is found in non- muscle tissue and cells. Neither of the two variants has been detected in skeletal muscle. This MAb recognizes only the 150kDa variant (h-caldesmon) in Western blots of human aortic media extracts and is unreactive with fibroblast extracts from cultivated human foreskin. Caldesmon is a developmentally regulated protein involved in smooth muscle and non-muscle contraction.

Research Areas

Cardiovascular

Known Applications & Suggested Dilutions

Western Blot (1-2ug/ml) | ,Immunohistology (Formalin-fixed) (1-2ug/ml for 30 minutes at RT),(Staining of formalin-fixed tissues requires boiling tissue sections in 1mM EDTA, pH 7.5-8.5, for 10-20 min followed by cooling at RT for 20 minutes),Optimal dilution for a specific application should be determined.

Limitations and Warranty

This antibody is available for research use only and is not approved for use in diagnosis.

There are no warranties, expressed or implied, which extend beyond this description. Company is not liable for any personal injury or economic loss resulting from this product.

Supplied As

200ug/ml of Ab purified by Protein A/G. Prepared in 10mM PBS with 0.05% BSA & 0.05% azide. Also available WITHOUT BSA & azide at 1.0mg/ml.

Storage and Stability

Antibody with azide - store at 2 to 8 °C. Antibody without azide - store at -20 to -80 °C. Antibody is stable for 24 months. Non-hazardous. No MSDS required.
