

Recombinant Caldesmon, HMW (h-Caldesmon) (Smooth Muscle Marker) Antibody

Rabbit Monoclonal Antibody [Clone CALD1/7024R]

Catalog No	Format	Size
800-RBM15-P0	Purified Ab with BSA and Azide at 200ug/ml	20 ug
800-RBM15-P1	Purified Ab with BSA and Azide at 200ug/ml	100 ug
800-RBM15-P1ABX	Purified Ab WITHOUT BSA and Azide at 1.0mg/ml	100 ug

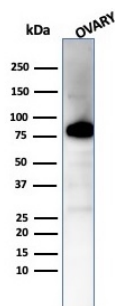
Applications	Tested Dillution	Note
Immunohistochemistry (IHC)	1-2ug/ml	30 min at RT. Staining of formalin-fixed tissues requires heating tissue sections in 10mM Tris with 1mM EDTA, pH 9.0, for 45 min at 95°C followed by cooling at RT for 20 minutes
Western Blot (WB)	2-4ug/ml	

Product Details

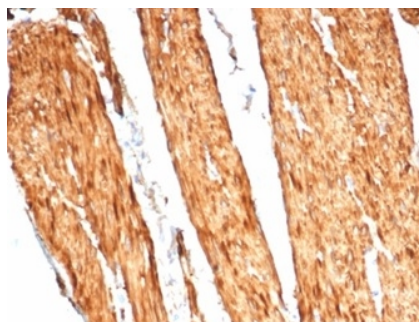
Clone	CALD1/7024R
Gene Name	CALD1
Immunogen	Recombinant human full-length CALD1 protein
Host	Rabbit
Clonality	Monoclonal
Isotype / Light Chain	IgG / Kappa
Mol. Weight of Antigen	150kDa
Cellular Localization	Cytoplasm, Cytoskeleton, Myofibril, Stress fiber
Species Reactivity	Human
Positive Control	Blood vessels in all tissues, smooth muscle or leiomyosarcoma. Skeletal Muscle.

**Optimal dilution for a specific application should be determined.*

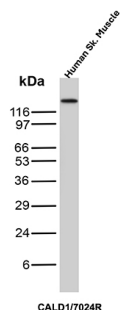
Product Images for Recombinant Caldesmon, HMW (h-Caldesmon) (Smooth Muscle Marker) Antibody



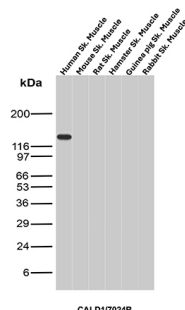
Western blot analysis of human ovary tissue lysate using h-CALD Rabbit Recombinant Monoclonal Antibody (CALD1/7024R).



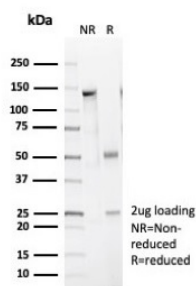
Formalin-fixed, paraffin-embedded human colon stained with h-CALD Rabbit Recombinant Monoclonal Antibody (CALD1/7024R). HIER: Tris/EDTA, pH9.0, 45min. 2 °: HRP-polymer, 30min. DAB, 5min.



Western blot analysis of Human Skeletal Muscle tissue lysate using h-CALD Rabbit Recombinant Monoclonal Antibody (CALD1/7024R).



Western blot analysis of Skeletal Muscle tissue lysate of different species using h-CALD Rabbit Recombinant Monoclonal Antibody (CALD1/7024R).



SDS-PAGE Analysis Purified h-CALD Rabbit Recombinant Monoclonal Antibody (CALD1/7024R). Confirmation of Integrity and Purity of Antibody.

Specificity & Comments

Recognizes a protein of 150kDa, which is identified as the high molecular weight variant of Caldesmon. Two closely related variants of human caldesmon have been identified which are different in their electrophoretic mobility and cellular distribution. The h-caldesmon variant (120 150kDa) is predominantly expressed in smooth muscle whereas l-caldesmon (70 80kDa) is found in non- muscle tissue and cells. Neither of the two variants has been detected in skeletal muscle. This MAb recognizes only the 150kDa variant (h-caldesmon) in Western blots of human aortic media extracts and is unreactive with fibroblast extracts from cultivated human foreskin. Caldesmon is a developmentally regulated protein involved in smooth muscle and non-muscle contraction.

Supplied As

200ug/ml of Ab purified by Protein A/G. Prepared in 10mM PBS with 0.05% BSA & 0.05% azide. Also available WITHOUT BSA & azide at 1.0mg/ml.

Storage and Stability

Antibody with azide - store at 2 to 8 °C. Antibody without azide - store at -20 to -80 °C. Antibody is stable for 24 months. Non-hazardous. No MSDS required.

Research Areas

Cardiovascular

Limitations and Warranty

This antibody is available for research use only and is not approved for use in diagnosis. There are no warranties, expressed or implied, which extend beyond this description. Company is not liable for any personal injury or economic loss resulting from this product.