

Caldesmon, HMW (h-Caldesmon) (Smooth Muscle Marker) Antibody

Mouse Monoclonal Antibody [Clone h-CALD]

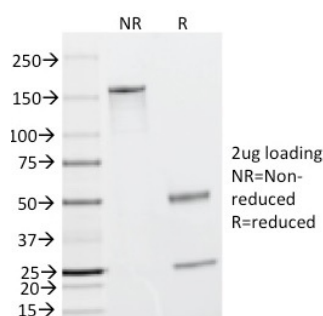
Catalog No	Format	Size
800-MSM1-P0	Purified Ab with BSA and Azide	200ug/ml
800-MSM1-P1	Purified Ab with BSA and Azide	200ug/ml
800-MSM1-P1ABX	Purified Ab WITHOUT BSA and Azide	1.0mg/ml

Applications	Tested Dillution
Flow Cytometry (Flow)	1-2ug/million cells
Immunofluorescence (IF)	1-3ug/ml
Immunohistochemistry (IHC)	1-2ug/ml
Western Blot (WB)	2-4ug/ml

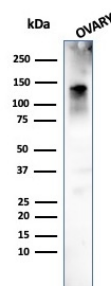
Product Details	
Clone	h-CALD
Gene Name	CALD1
Immunogen	Crude human uterus extract
Host	Mouse
Clonality	Monoclonal
Isotype / Light Chain	IgG1 / Kappa
Mol. Weight of Antigen	150kDa
Cellular Localization	Cytoplasm, Cytoskeleton, Myofibril, Stress fiber
Species Reactivity	Human
Positive Control	Blood vessels in all tissues, smooth muscle or leiomyosarcoma., Uterus

**Optimal dilution for a specific application should be determined.*

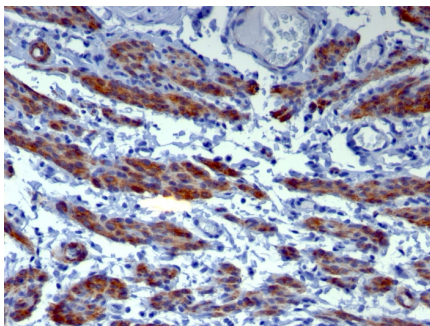
Product Images for Caldesmon, HMW (h-Caldesmon) (Smooth Muscle Marker) Antibody



SDS-PAGE Analysis of Purified Caldesmon Mouse Monoclonal Antibody (h-CALD). Confirmation of Integrity and Purity of Antibody.



Western Blot Analysis of human Ovary tissue using Caldesmon Mouse Monoclonal Antibody (h-CALD).



Formalin-fixed, paraffin-embedded human Leiomyosarcoma stained with Caldesmon Mouse Monoclonal Antibody (h-CALD).

Specificity & Comments

Recognizes a protein of 150kDa, which is identified as the high molecular weight variant of Caldesmon. Two closely related variants of human caldesmon have been identified which are different in their electrophoretic mobility and cellular distribution. The h-caldesmon variant (120'150kDa) is predominantly expressed in smooth muscle whereas l-caldesmon (70'80kDa) is found in non- muscle tissue and cells. Neither of the two variants has been detected in skeletal muscle. This MAb recognizes only the 150kDa variant (h-caldesmon) in Western blots of human aortic media extracts and is unreactive with fibroblast extracts from cultivated human foreskin. Caldesmon is a developmentally regulated protein involved in smooth muscle and non-muscle contraction.

Research Areas

Cardiovascular

Known Applications & Suggested Dilutions

Western Blot (2-4ug/ml) | Flow Cytometry (1-2ug/million cells) | Immunofluorescence (1-2ug/ml) | Immunohistochemistry (Formalin-fixed) (1-2ug/ml for 30 minutes at RT)(Staining of formalin-fixed tissues requires heating tissue sections in 10mM Tris with 1mM EDTA, pH 9.0, for 45 min at 95°C followed by cooling at RT for 20 minutes) | Optimal dilution for a specific application should be determined.

Limitations and Warranty

This antibody is available for research use only and is not approved for use in diagnosis.

There are no warranties, expressed or implied, which extend beyond this description. Company is not liable for any personal injury or economic loss resulting from this product.

Supplied As

200ug/ml of Ab Purified from Bioreactor Concentrate by Protein A/G. Prepared in 10mM PBS with 0.05% BSA & 0.05% azide. Also available WITHOUT BSA & azide at 1.0mg/ml.

Storage and Stability

Antibody with azide - store at 2 to 8°C. Antibody without azide - store at -20 to -80°C. Antibody is stable for 24 months. Non-hazardous. No MSDS required.