

## PAX8 (Renal Cell Marker) Antibody

Mouse Monoclonal Antibody [Clone PAX8/1492]

Catalog No	Format	Size
7849-MSM2-P0	Purified Ab with BSA and Azide at 200ug/ml	20 ug
7849-MSM2-P1	Purified Ab with BSA and Azide at 200ug/ml	100 ug
7849-MSM2-P1ABX	Purified Ab WITHOUT BSA and Azide at 1.0mg/ml	100 ug

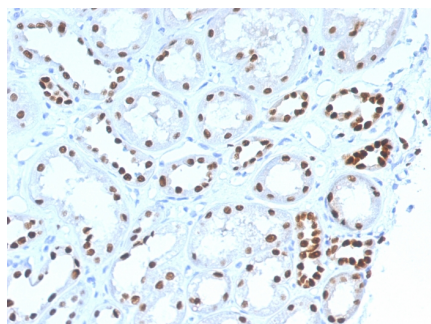
Applications	Tested Dillution	Note
Flow Cytometry (Flow)	1-2ug/million cells	
Immunofluorescence (IF)	1-3ug/ml	
Immunohistochemistry (IHC)	1-2ug/ml	30 min at RT. Staining of formalin-fixed tissues requires heating tissue sections in 10mM Tris with 1mM EDTA, pH 9.0, for 45 min at 95°C followed by cooling at RT for 20 minutes
Western Blot (WB)	2-4ug/ml	

### Product Details

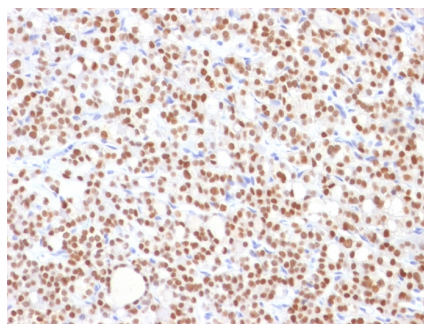
Clone	PAX8/1492
Gene Name	PAX8
Immunogen	Recombinant fragment (around aa 60-261) of human PAX8 protein (exact sequence is proprietary)
Host	Mouse
Clonality	Monoclonal
Isotype / Light Chain	IgG2b / Kappa
Mol. Weight of Antigen	62kDa
Cellular Localization	Nucleus
Species Reactivity	Dog, Human
Positive Control	Raji cells. Renal Cell Carcinoma (RCC).

*\*Optimal dilution for a specific application should be determined.*

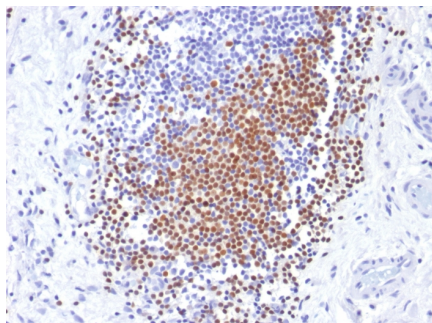
### Product Images for PAX8 (Renal Cell Marker) Antibody



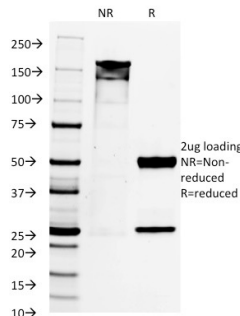
Formalin-fixed, paraffin-embedded human Renal Cell Carcinoma stained with PAX8 Mouse Monoclonal Antibody (PAX8/1492).



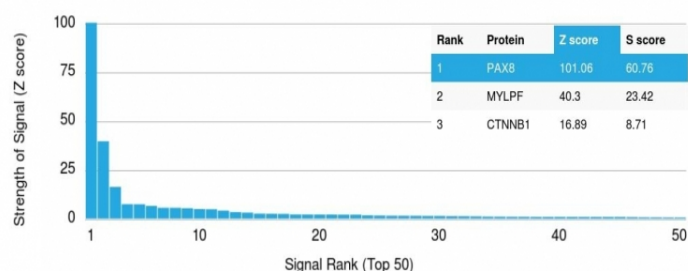
Formalin-fixed, paraffin-embedded human Thyroid Carcinoma stained with PAX8 Mouse Monoclonal Antibody (PAX8/1492).



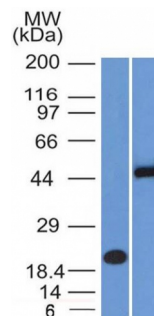
Formalin-fixed, paraffin-embedded human Urothelial Carcinoma stained with PAX8 Mouse Monoclonal Antibody (PAX8/1492).



SDS-PAGE Analysis Purified PAX8 Mouse Monoclonal Antibody (PAX8/1492). Confirmation of Integrity and Purity of Antibody.



Analysis of Protein Array containing >19,000 full-length human proteins using PAX8 Mouse Monoclonal Antibody (PAX8/1492) Z- and S- Score: The Z-score represents the strength of a signal that a monoclonal antibody (MAb) (in combination with a fluorescently-tagged anti-IgG secondary antibody) produces when binding to a particular protein on the HuProt™ array. Z-scores are described in units of standard deviations (SD's) above the mean value of all signals generated on that array. If targets on HuProt™ are arranged in descending order of the Z-score, the S-score is the difference (also in units of SD's) between the Z-score. S-score therefore represents the relative target specificity of a MAb to its intended target. A MAb is considered to specific to its intended target, if the MAb has an S-score of at least 2.5. For example, if a MAb binds to protein X with a Z-score of 43 and to protein Y with a Z-score of 14, then the S-score for the binding of that MAb to protein X is equal to 29.



Western Blot Analysis (A) Recombinant Protein (B) Raji cell lysate Using PAX8 Mouse Monoclonal Antibody (PAX8/1492).

## Specificity & Comments

Recognizes a protein of 62kDa, identified as PAX8. It is a member of the paired box (PAX) family of transcription factors. This nuclear protein is involved in thyroid follicular cell development and expression of thyroid-specific genes. Mutations in this gene have been associated with thyroid dysgenesis, thyroid follicular carcinomas, and atypical thyroid adenomas. PAX-8 is expressed in the thyroid (and associated carcinomas), non-ciliated mucosal cells of the fallopian tubes, and simple ovarian inclusion cysts, but not normal ovarian surface epithelial cells. PAX-8 is expressed in a high percentage of ovarian serous, endometrioid, and clear cell carcinomas, but only rarely in primary ovarian mucinous adenocarcinomas. PAX-8 expression is reported in renal tubules as well as renal cell carcinoma, nephroblastoma, and seminoma. PAX-8 antibody may be used as an additional immunohistochemical marker for renal epithelial tumors.

## Limitations and Warranty

This antibody is available for research use only and is not approved for use in diagnosis. There are no warranties, expressed or implied, which extend beyond this description. Company is not liable for any personal injury or economic loss resulting from this product.

## Supplied As

200ug/ml of Ab Purified from Bioreactor Concentrate by Protein A/G. Prepared in 10mM PBS with 0.05% BSA & 0.05% azide. Also available WITHOUT BSA & azide at 1.0mg/ml.

## Storage and Stability

Antibody with azide - store at 2 to 8°C. Antibody without azide - store at -20 to -80°C. Antibody is stable for 24 months. Non-hazardous. No MSDS required.

## Research Areas

Cancer, Nuclear Marker