

14-3-3E / Tryptophan 5-Monooxygenase Antibody

Mouse Monoclonal Antibody [Clone CPTC-YWHAE-1]

Catalog No	Format	Size
7531-MSM1-P0	Purified Ab with BSA and Azide at 200ug/ml	20 ug
7531-MSM1-P1	Purified Ab with BSA and Azide at 200ug/ml	100 ug
7531-MSM1-P1ABX	Purified Ab WITHOUT BSA and Azide at 1.0mg/ml	100 ug

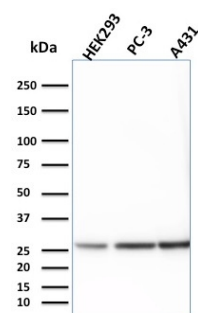
Applications	Tested Dillution	Note
Immunohistochemistry (IHC)	1-2ug/ml	30 min at RT. Staining of formalin-fixed tissues requires heating tissue sections in 10mM Tris with 1mM EDTA, pH 9.0, for 45 min at 95°C followed by cooling at RT for 20 minutes
Western Blot (WB)	2-4ug/ml	

Product Details

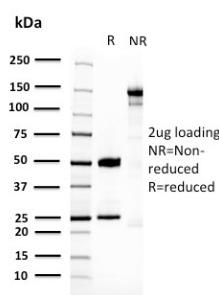
Clone	CPTC-YWHAE-1
Gene Name	YWHAE
Immunogen	Recombinant human full-length YWHAE protein
Host	Mouse
Clonality	Monoclonal
Isotype / Light Chain	IgG2a / Kappa
Mol. Weight of Antigen	29.4kDa
Cellular Localization	Cytoplasm, Nucleus
Species Reactivity	Guinea Pig, Hamster, Human, Mouse, Rat
Positive Control	HEK-293 or A-431 cell lines. Human Brain, Mouse Brain, Rat Brain, Hamster Brain, Guinea pig Brain, Human Lungs, Mouse Lungs, Rat Lungs, Hamster Lungs or Guinea pig Lungs

**Optimal dilution for a specific application should be determined.*

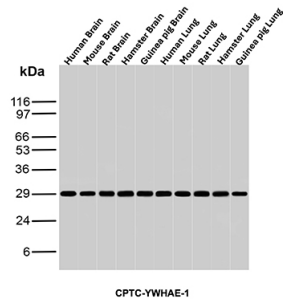
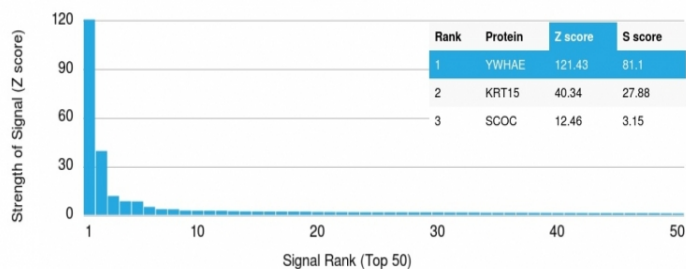
Product Images for 14-3-3E / Tryptophan 5-Monooxygenase Antibody



Western Blot Analysis of HEK293, PC-3 and A431 cell lysates using 14-3-3E Mouse Monoclonal Antibody (CPTC-YWHAE-1).

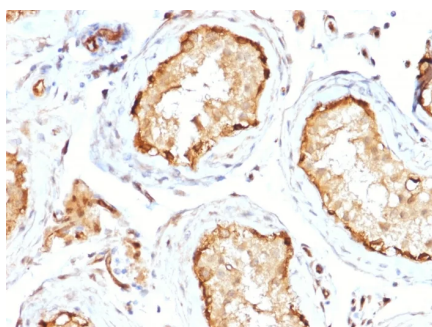


SDS-PAGE Analysis of Purified 14-3-3E Mouse Monoclonal Antibody (CPTC-YWHAE-1). Confirmation of Purity and Integrity of Antibody.



Analysis of Protein Array containing more than 19,000 full-length human proteins using 14-3-3E Mouse Monoclonal Antibody (CPTC-YWHAE-1). Z- and S- Score: The Z-score represents the strength of a signal that a monoclonal antibody (MAb) (in combination with a fluorescently-tagged anti-IgG secondary antibody) produces when binding to a particular protein on the HuProtTM array. Z-scores are described in units of standard deviations (SD's) above the mean value of all signals generated on that array. If targets on HuProtTM are arranged in descending order of the Z-score, the S-score is the difference (also in units of SD's) between the Z-score. S-score therefore represents the relative target specificity of a MAb to its intended target. A MAb is considered to specific to its intended target, if the MAb has an S-score of at least 2.5. For example, if a MAb binds to protein X with a Z-score of 43 and to protein Y with a Z-score of 14, then the S-score for the binding of that MAb to protein X is equal to 29.

Western blot analysis of Human Brain, Mouse Brain, Rat Brain, Hamster Brain, Guinea pig Brain, Human Lungs, Mouse Lungs, Rat Lungs, Hamster Lungs and Guinea pig Lungs tissue lysates using 14-3-3E Mouse Monoclonal Antibody (CPTC-YWHAE-1).



Formalin-fixed, paraffin-embedded human Testis stained with 14-3-3E Mouse Monoclonal Antibody (CPTC-YWHAE-1).

Specificity & Comments

Adapter protein implicated in the regulation of a large spectrum of both general and specialized signaling pathway. Binds to a large number of partners, usually by recognition of a phosphoserine or phosphothreonine motif. Binding generally results in the modulation of the activity of the binding partner. It interacts with CDC25 phosphatases, RAF1 and IRS1 proteins, suggesting its role in diverse biochemical activities related to signal transduction, such as cell division and regulation of insulin sensitivity. It has also been implicated in the pathogenesis of small cell lung cancer. The YWHAE gene which encodes 14-3-3E has also been identified as a possible susceptibility gene for schizophrenia.

Supplied As

200ug/ml of Ab Purified from Bioreactor Concentrate by Protein A/G. Prepared in 10mM PBS with 0.05% BSA & 0.05% azide. Also available WITHOUT BSA & azide at 1.0mg/ml.

Storage and Stability

Antibody with azide - store at 2 to 8°C. Antibody without azide - store at -20 to -80°C. Antibody is stable for 24 months. Non-hazardous. No MSDS required.

Research Areas

Apoptosis, Autophagy, Cancer, Cardiovascular, AKT Signaling, Defective Intrinsic Apoptosis, Infectious Disease, Signal Transduction, Transcription Factors

Limitations and Warranty

This antibody is available for research use only and is not approved for use in diagnosis. There are no warranties, expressed or implied, which extend beyond this description. Company is not liable for any personal injury or economic loss resulting from this product.