

Recombinant von Willebrand Factor / Factor VIII Related-Ag (Endothelial Marker) Antibody
Mouse Monoclonal Antibody [Clone rVWF/1465]

Catalog No	Format	Size
7450-MSM8-P0	Purified Ab with BSA and Azide at 200ug/ml	20 ug
7450-MSM8-P1	Purified Ab with BSA and Azide at 200ug/ml	100 ug
7450-MSM8-P1ABX	Purified Ab WITHOUT BSA and Azide at 1.0mg/ml	100 ug

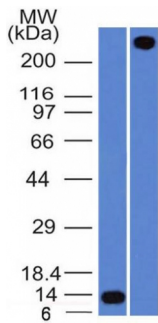
Applications	Tested Dillution	Note
Immunohistochemistry (IHC)	1-2ug/ml	30 min at RT. Staining of formalin-fixed tissues requires heating tissue sections in 10mM Tris with 1mM EDTA, pH 9.0, for 45 min at 95°C followed by cooling at RT for 20 minutes
Western Blot (WB)	2-4ug/ml	

Product Details

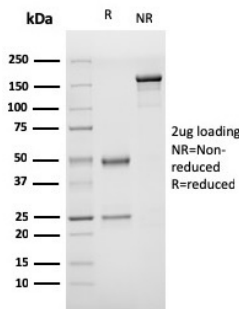
Clone	rVWF/1465
Gene Name	VWF
Immunogen	Recombinant fragment of human vWF protein (aa1815-1939) (exact sequence is proprietary)
Host	Mouse
Clonality	Monoclonal
Isotype / Light Chain	IgG1 / Kappa
Mol. Weight of Antigen	250kDa
Cellular Localization	Extracellular matrix, Extracellular space, Secreted
Species Reactivity	Human
Positive Control	HUVEC cells. Tonsil.

*Optimal dilution for a specific application should be determined.

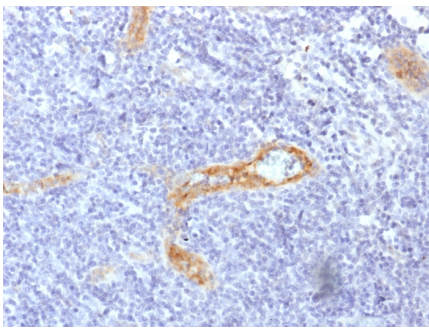
Product Images for Recombinant von Willebrand Factor / Factor VIII Related-Ag (Endothelial Marker) Antibody



Western Blot Analysis A) Recombinant Protein (B) human lung lysate Using Recombinant Mouse Monoclonal Antibody (rVWF/1465).



SDS-PAGE Analysis of Purified vWF Recombinant Mouse Monoclonal Antibody (rVWF/1465). Confirmation of Purity and Integrity of Antibody.



Formalin-fixed, paraffin-embedded human Tonsil stained with vWF Recombinant Mouse Monoclonal Antibody (rVWF/1465).

Specificity & Comments

von Willebrand Factor (vWF) is a multimeric glycoprotein that is found in endothelial cells, plasma and platelets. It acts as a carrier protein for Factor VIII and promotes platelet adhesion and aggregation. vWF undergoes a variety of posttranslational modifications that influence the affinity and availability for Factor VIII, including cleavage of the propeptide and formation of N-terminal disulfide bonds. This antibody helps to establish the endothelial nature of some lesions of disputed histogenesis, e.g. Kaposi's sarcoma and cardiac myxoma. It is widely used for differentiating vascular lesions from those of other tissue differentiation within a panel of other vascular markers although not all tumors of endothelial differentiation contain this antigen.

Limitations and Warranty

This antibody is available for research use only and is not approved for use in diagnosis. There are no warranties, expressed or implied, which extend beyond this description. Company is not liable for any personal injury or economic loss resulting from this product.

Supplied As

200ug/ml of recombinant Ab Purified by Protein A/G. Prepared in 10mM PBS with 0.05% BSA & 0.05% azide. Also available WITHOUT BSA & azide at 1.0mg/ml.

Storage and Stability

Antibody with azide - store at 2 to 8°C. Antibody without azide - store at -20 to -80°C. Antibody is stable for 24 months. Non-hazardous. No MSDS required.

Research Areas

Angiogenesis, Cardiovascular, Endothelial Cell Marker, Infectious Disease, Signal Transduction