

Recombinant VLDL-Receptor (Very Low Density Lipoprotein Receptor) Antibody

Mouse Monoclonal Antibody [Clone rVLDLR/1337]

Catalog No	Format	Size
7436-MSM3-P0	Purified Ab with BSA and Azide at 200ug/ml	20 ug
7436-MSM3-P1	Purified Ab with BSA and Azide at 200ug/ml	100 ug
7436-MSM3-P1ABX	Purified Ab WITHOUT BSA or Azide at 1.0mg/ml	100 ug

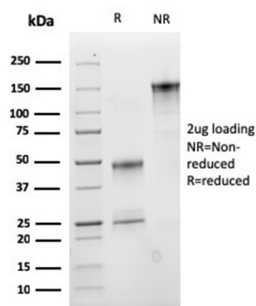
Applications	Tested Dillution	Note
Immunohistochemistry (IHC)	1-2ug/ml	30 min at RT. Staining of formalin-fixed tissues requires heating tissue sections in 10mM Tris with 1mM EDTA, pH 9.0, for 45 min at 95°C followed by cooling at RT for 20 minutes
Western Blot (WB)	2-4ug/ml	

Product Details

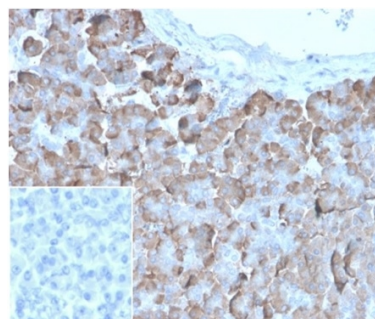
Clone	rVLDLR/1337
Immunogen	Recombinant fragment corresponding to the c-terminal region of the human VLDL Receptor protein
Host	Mouse
Clonality	Monoclonal
Isotype / Light Chain	IgG1 / Kappa
Mol. Weight of Antigen	96.1kDa
Cellular Localization	Cell membrane, Clathrin-coated pit, Membrane
Species Reactivity	Human
Positive Control	Cerebellum, Heart or Skeletal Muscle., HeLaor U-251 cells.Human pancreas

*Optimal dilution for a specific application should be determined.

Product Images for Recombinant VLDL-Receptor (Very Low Density Lipoprotein Receptor) Antibody



SDS-PAGE Analysis of Purified VLDLR recombinant Mouse Monoclonal Antibody (rVLDLR/1337). Confirmation of Purity and Integrity of Antibody.



Formalin-fixed, paraffin-embedded human pancreas stained with VLDL-Receptor Recombinant Mouse Monoclonal Antibody (rVLDLR/1337). Inset: PBS instead of primary antibody; secondary only negative control.

Specificity & Comments

VLDLR (very low density lipoprotein receptor) is a member of the LDL receptor gene family, which includes LDL receptor, LRP, megalin, VLDLR and ApoER2. The LDL receptor family is characterized by a cluster of cysteine-rich class A repeats, epidermal growth factor (EGF)-like repeats, YWTD repeats and an O-linked sugar domain. VLDLR associates with RAP (receptor associated protein) during receptor folding, and RAP facilitates the secretion of the extracellular region of VLDLR. VLDLR is thought to mediate the interaction of extracellular Reelin and cytosolic mDab1 (mammalian disabled protein), which activates a tyrosine kinase. This pathway regulates the migration of neurons along the radial

glial fiber network during brain development.
2 Union Square, Union City, CA 94587, Tel: 1-866-2-NEOBIO (1-866-263-6246)
orders@NeoBiotechnologies.com, www.NeoBiotechnologies.com

Supplied As

200ug/ml of Ab produced in a mammalian-based expression system. Prepared in 10mM PBS with 0.05% BSA & 0.05% azide. Also available WITHOUT BSA & azide at 1.0mg/ml.

Storage and Stability

Antibody with azide - store at 2 to 8 °C. Antibody without azide - store at -20 to -80 °C. Antibody is stable for 24 months. Non-hazardous. No MSDS required.

Limitations and Warranty

This antibody is available for research use only and is not approved for use in diagnosis. There are no warranties, expressed or implied, which extend beyond this description. Company is not liable for any personal injury or economic loss resulting from this product.
