

Ezrin / p81 Antibody

Mouse Monoclonal Antibody [Clone CPTC-Ezrin-1]

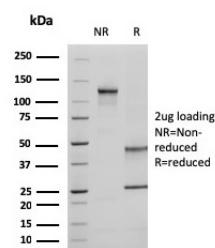
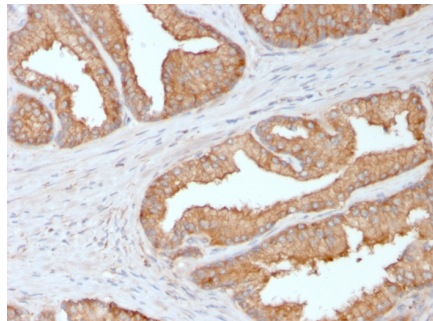
Catalog No	Format	Size
7430-MSM1-P0	Purified Ab with BSA and Azide	200ug/ml
7430-MSM1-P1	Purified Ab with BSA and Azide	200ug/ml
7430-MSM1-P1ABX	Purified Ab WITHOUT BSA and Azide	1.0mg/ml

Applications	Tested Dillution
Western Blot (WB)	2-4ug/ml

Product Details	
Clone	CPTC-Ezrin-1
Gene Name	EZR
Immunogen	Recombinant human full-length Ezrin protein
Host	Mouse
Clonality	Monoclonal
Isotype / Light Chain	IgG2b
Mol. Weight of Antigen	87kDa
Cellular Localization	Apical cell membrane, Cell cortex, Cell projection, Cytoplasm, Cytoskeleton, Microvillus, Microvillus membrane, Ruffle membrane
Species Reactivity	Human
Positive Control	A431, HEK293, HeLa, Jurkat, MCF-7, MCF-7. Cerebral cortex and hippocampus., SKBR3

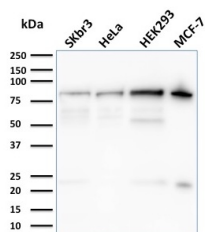
**Optimal dilution for a specific application should be determined.*

Product Images for Ezrin / p81 Antibody

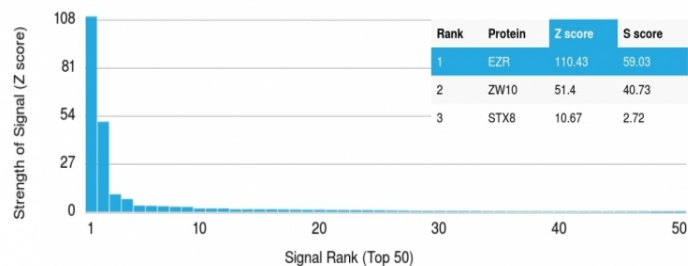


Formalin-fixed, paraffin-embedded human Prostate Carcinoma stained with Ezrin Mouse Monoclonal Antibody (CPTC-Ezrin-1).

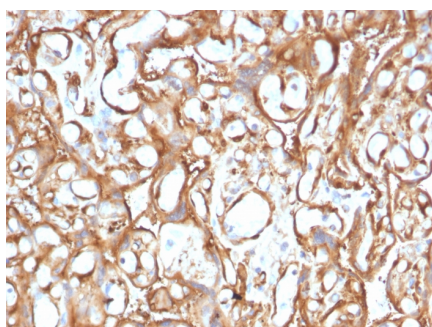
SDS-PAGE Analysis of Purified Ezrin Mouse Monoclonal Antibody (CPTC-Ezrin-1). Confirmation of Purity and Integrity of Antibody.



Western Blot Analysis of SKBr-3, HeLa, HEK293, MCF-7 Cell lysates using Ezrin Mouse Monoclonal Antibody (CPTC-Ezrin-1).



Analysis of Protein Array containing more than 19,000 full-length human proteins using Ezrin / p81 Mouse Monoclonal Antibody (CPTC-Ezrin-1). Z- and S- Score: The Z-score represents the strength of a signal that a monoclonal antibody (MAb) (in combination with a fluorescently-tagged anti-IgG secondary antibody) produces when binding to a particular protein on the HuProt™ array. Z-scores are described in units of standard deviations (SD's) above the mean value of all signals generated on that array. If targets on HuProt™ are arranged in descending order of the Z-score, the S-score is the difference (also in units of SD's) between the Z-score. S-score therefore represents the relative target specificity of a MAb to its intended target. A MAb is considered to specific to its intended target, if the MAb has an S-score of at least 2.5. For example, if a MAb binds to protein X with a Z-score of 43 and to protein Y with a Z-score of 14, then the S-score for the binding of that MAb to protein X is equal to 29.



Formalin-fixed, paraffin-embedded human Placenta stained with Ezrin Mouse Monoclonal Antibody (CPTC-Ezrin-1).

Specificity & Comments

Ezrin, Moesin and Radixin belong to a family of highly homologous actin-associated proteins that are localized just beneath the plasma membrane. The proteins are believed to be involved in the mediation of interactions between cytoskeletal and membrane proteins. Ezrin serves as a major cytoplasmic substrate of various protein-tyrosine kinases, including the epidermal growth factor receptor. Ezrin has also been identified as a cAMP-dependent protein kinase (A-kinase) anchoring protein and designated AKAP78. Moesin and Radixin share over 70% homology with Ezrin and are co-expressed within various cell types. Despite the high degree of homology, the three proteins exhibit a distinct receptor-specific pattern of phosphorylation. Overexpression of Ezrin predicts the poor prognosis of gastric adenocarcinoma.

Research Areas

Cardiovascular, Developmental Biology, BBB VCAM-1 Signaling

Known Applications & Suggested Dilutions

Western Blotting (1-2ug/ml) | Immunohistology (Formalin-fixed) (1-2ug/ml for 30 min at RT), (Staining of formalin-fixed tissues requires boiling tissue sections in 10mM Citrate Buffer, pH 6.0, for 10-20 min followed by cooling at RT for 20 minutes), Optimal dilution for a specific application should be determined.

Limitations and Warranty

This antibody is available for research use only and is not approved for use in diagnosis.

There are no warranties, expressed or implied, which extend beyond this description. Company is not liable for any personal injury or economic loss resulting from this product.

Supplied As

200ug/ml of Ab purified from Bioreactor Concentrate by Protein A/G. Prepared in 10mM PBS with 0.05% BSA & 0.05% azide. Also available WITHOUT BSA & azide at 1.0mg/ml.

Storage and Stability

Antibody with azide - store at 2 to 8 °C. Antibody without azide - store at -20 to -80 °C. Antibody is stable for 24 months. Non-hazardous. No MSDS required.