

Recombinant Vinculin (Marker of Age-related Macular Degeneration) Antibody

Rabbit Monoclonal Antibody [Clone VCL/7091R]

Catalog No	Format	Size
7414-RBM6-P0	Purified Ab with BSA and Azide at 200ug/ml	20 ug
7414-RBM6-P1	Purified Ab with BSA and Azide at 200ug/ml	100 ug
7414-RBM6-P1ABX	Purified Ab WITHOUT BSA and Azide at 1.0mg/ml	100 ug

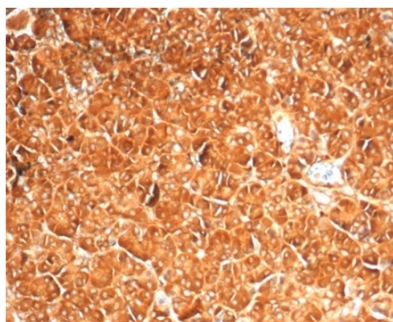
Applications	Tested Dillution	Note
Immunohistochemistry (IHC)	1-2ug/ml	30 min at RT. Staining of formalin-fixed tissues requires heating tissue sections in 10mM Tris with 1mM EDTA, pH 9.0, for 45 min at 95°C followed by cooling at RT for 20 minutes
Western Blot (WB)	2-4ug/ml	

Product Details

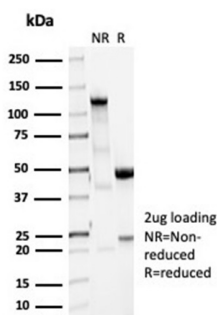
Clone	VCL/7091R
Gene Name	VCL
Immunogen	Recombinant fragment (around aa 174-322) of human Vinculin (VCL) protein (exact sequence is proprietary)
Host	Rabbit
Clonality	Monoclonal
Isotype / Light Chain	IgG / Kappa
Mol. Weight of Antigen	117kDa
Cellular Localization	Adherens junction, Cell junction, Cell membrane, Cytoplasm, Cytoskeleton, Focal adhesion, Sarcolemma
Species Reactivity	Human, Mouse
Positive Control	A431, K562, NIH3T3, U-87 or THP-1 cells. Human bladder or testis. Human Skeletal muscle, HEK293

*Optimal dilution for a specific application should be determined.

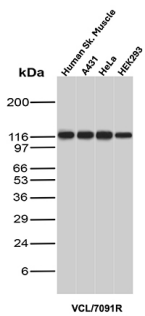
Product Images for Recombinant Vinculin (Marker of Age-related Macular Degeneration) Antibody



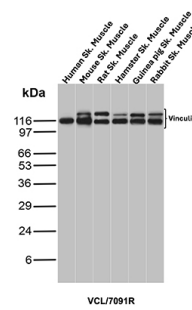
Formalin-fixed, paraffin-embedded human pancreas stained with Vinculin Recombinant Rabbit Monoclonal Antibody (VCL/7091R) at 2ug/ml.



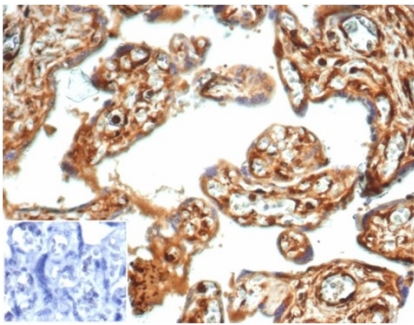
SDS-PAGE Analysis of Purified Vinculin Recombinant Rabbit Monoclonal Antibody (VCL/7091R). Confirmation of Purity and Integrity of Antibody.



Western Blot Analysis of Human Skeletal muscle, A431, HeLa and HEK293 lysates using Vinculin Recombinant Rabbit Monoclonal Antibody (VCL/7091R).



Western Blot Analysis of Skeletal muscle tissue lysates of different species using Vinculin Recombinant Rabbit Monoclonal Antibody (VCL/7091R).



Formalin-fixed, paraffin-embedded human placenta stained with Vinculin Recombinant Rabbit Monoclonal Antibody (VCL/7091R) at 2ug/ml. Inset: PBS instead of primary antibody; secondary only negative control.

Specificity & Comments

Focal adhesions are identified as areas within the plasma membrane of tissue culture cells that adhere tightly to the underlying substrate. In vivo, these regions are involved in the adhesion of cells to the extracellular matrix. Paxillin and vinculin are cytoskeletal, focal adhesion proteins that are components of a protein complex which links the Actin network to the plasma membrane. Vinculin binding sites have been identified on other cytoskeletal proteins, including Talin and β -Actinin. In addition, vinculin, Talin and β -Actinin each contain Actin binding sites. Expression of vinculin and Talin have been shown to be affected by the level of Actin expression. β -Actinin has been shown to link Actin to integrins in the plasma membrane through interactions with the vinculin and Talin complex or by a direct interaction with integrin.

Limitations and Warranty

This antibody is available for research use only and is not approved for use in diagnosis. There are no warranties, expressed or implied, which extend beyond this description. Company is not liable for any personal injury or economic loss resulting from this product.

Supplied As

200ug/ml of Ab purified from Bioreactor Concentrate by Protein A/G. Prepared in 10mM PBS with 0.05% BSA & 0.05% azide. Also available WITHOUT BSA & azide at 1.0mg/ml.

Storage and Stability

Antibody with azide - store at 2 to 8 °C. Antibody without azide - store at -20 to -80 °C. Antibody is stable for 24 months. Non-hazardous. No MSDS required.

Research Areas

Cardiovascular, Immunology, Infectious Disease, Signal Transduction