

Vinculin (Marker of Age-related Macular Degeneration) Antibody

Mouse Monoclonal Antibody [Clone VCL/2572]

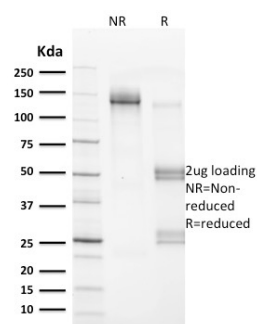
Catalog No	Format	Size
7414-MSM1-P0	Purified Ab with BSA and Azide at 200ug/ml	20 ug
7414-MSM1-P1	Purified Ab with BSA and Azide at 200ug/ml	100 ug
7414-MSM1-P1ABX	Purified Ab WITHOUT BSA and Azide at 1.0mg/ml	100 ug

Applications	Tested Dillution	Note
Immunohistochemistry (IHC)	1-2ug/ml	30 min at RT. Staining of formalin-fixed tissues requires heating tissue sections in 10mM Tris with 1mM EDTA, pH 9.0, for 45 min at 95°C followed by cooling at RT for 20 minutes
Western Blot (WB)	2-4ug/ml	

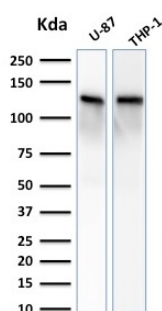
Product Details	
Clone	VCL/2572
Gene Name	VCL
Immunogen	Recombinant fragment (around aa 174-322) of human Vinculin (VCL) protein (exact sequence is proprietary)
Host	Mouse
Clonality	Monoclonal
Isotype / Light Chain	IgG1 / Kappa
Mol. Weight of Antigen	117kDa
Cellular Localization	Adherens junction, Cell junction, Cell membrane, Cytoplasm, Cytoskeleton, Focal adhesion, Sarcolemma
Species Reactivity	Human
Positive Control	THP-1 cells Human Bladder and Testis., U-87

*Optimal dilution for a specific application should be determined.

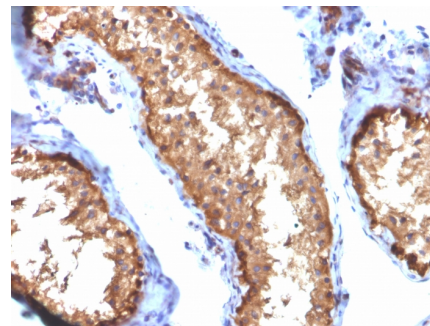
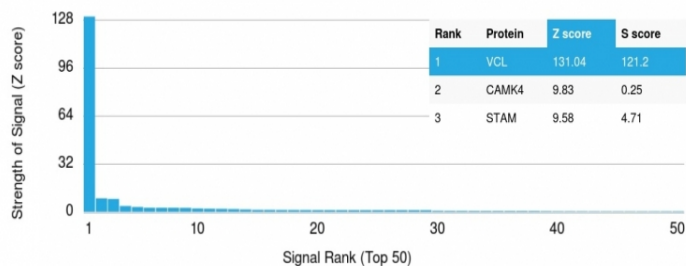
Product Images for Vinculin (Marker of Age-related Macular Degeneration) Antibody



SDS-PAGE Analysis of Purified VCL Mouse Monoclonal Antibody (VCL/2572). Confirmation of Integrity and Purity of Antibody.



Western Blot Analysis of U-87 and THP-1 cell lysate using VCL Mouse Monoclonal Antibody (VCL/2572).



Formalin-fixed, paraffin-embedded human Testis stained with VCL Mouse Monoclonal Antibody (VCL/2572).

Analysis of Protein Array containing more than 19,000 full-length human proteins using Vinculin Mouse Monoclonal Antibody (VCL/2572). Z- and S- Score: The Z-score represents the strength of a signal that a monoclonal antibody (MAb) (in combination with a fluorescently-tagged anti-IgG secondary antibody) produces when binding to a particular protein on the HuProt™ array. Z-scores are described in units of standard deviations (SD's) above the mean value of all signals generated on that array. If targets on HuProt™ are arranged in descending order of the Z-score, the S-score is the difference (also in units of SD's) between the Z-score. S-score therefore represents the relative target specificity of a MAb to its intended target. A MAb is considered to be specific to its intended target, if the MAb has an S-score of at least 2.5. For example, if a MAb binds to protein X with a Z-score of 43 and to protein Y with a Z-score of 14, then the S-score for the binding of that MAb to protein X is equal to 29.

Specificity & Comments

Focal adhesions are identified as areas within the plasma membrane of tissue culture cells that adhere tightly to the underlying substrate. In vivo, these regions are involved in the adhesion of cells to the extracellular matrix. Paxillin and vinculin are cytoskeletal, focal adhesion proteins that are components of a protein complex which links the Actin network to the plasma membrane. Vinculin binding sites have been identified on other cytoskeletal proteins, including Talin and -Actinin has been shown to link Actin to integrins in the plasma membrane through interactions with the vinculin and Talin complex or by a direct interaction with integrin.

Supplied As

200ug/ml of Ab Purified from Bioreactor Concentrate by Protein A/G. Prepared in 10mM PBS with 0.05% BSA & 0.05% azide. Also available WITHOUT BSA & azide at 1.0mg/ml.

Storage and Stability

Antibody with azide - store at 2 to 8°C. Antibody without azide - store at -20 to -80°C. Antibody is stable for 24 months. Non-hazardous. No MSDS required.

Research Areas

Cardiovascular, Immunology, Infectious Disease, Signal Transduction

Limitations and Warranty

This antibody is available for research use only and is not approved for use in diagnosis. There are no warranties, expressed or implied, which extend beyond this description. Company is not liable for any personal injury or economic loss resulting from this product.