

## Recombinant PGP9.5 / Uchl1 (pan-Neuronal Marker) Antibody

Rabbit Monoclonal Antibody [Clone UCHL1/4556R]

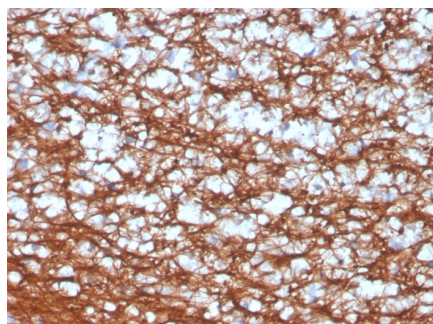
Catalog No	Format	Size
7345-RBM6-P0	Purified Ab with BSA and Azide	200ug/ml
7345-RBM6-P1	Purified Ab with BSA and Azide	200ug/ml
7345-RBM6-P1ABX	Purified Ab WITHOUT BSA and Azide	1.0mg/ml

Applications	Tested Dillution
Immunohistochemistry (IHC)	1-2ug/ml
Western Blot (WB)	2-4ug/ml

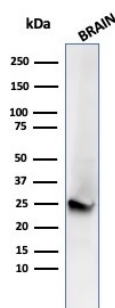
Product Details	
Clone	UCHL1/4556R
Gene Name	UCHL1
Immunogen	Recombinant full-length human UCHL1 protein
Host	Rabbit
Clonality	Monoclonal
Isotype / Light Chain	IgG / Kappa
Mol. Weight of Antigen	20-30kDa
Cellular Localization	Cytoplasm, Endoplasmic reticulum membrane
Species Reactivity	Dog, Human, Rat
Positive Control	Cerebellum

*\*Optimal dilution for a specific application should be determined.*

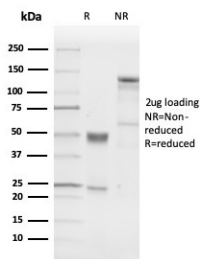
### Product Images for Recombinant PGP9.5 / Uchl1 (pan-Neuronal Marker) Antibody



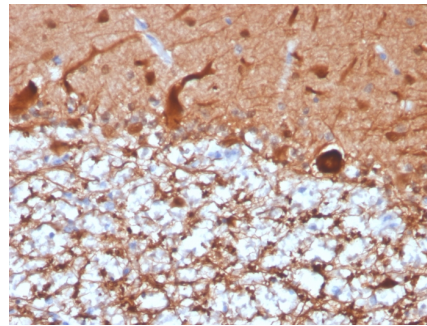
Formalin-fixed, paraffin-embedded human cerebellum stained with Pgp9.5 Rabbit Recombinant Monoclonal Antibody (UCHL1/4556R).



Western blot analysis of human brain tissue lysate using Pgp9.5 Rabbit Recombinant Monoclonal Antibody (UCHL1/4556R).



SDS-PAGE Analysis of Purified Pgp9.5 Rabbit Recombinant Monoclonal Antibody (UCHL1/4556R). Confirmation of Purity and Integrity of Antibody.



Formalin-fixed, paraffin-embedded human cerebellum stained with Pgp9.5 Rabbit Recombinant Monoclonal Antibody (UCHL1/4556R).

### Specificity & Comments

This MAb reacts with a protein of 20-30kDa, identified as PGP9.5, also known as ubiquitin carboxyl-terminal hydrolase-1 (UchL1). Initially, PGP9.5 expression in normal tissues was reported in neurons and neuroendocrine cells but later it was found in distal renal tubular epithelium, spermatogonia, Leydig cells, oocytes, melanocytes, prostatic secretory epithelium, ejaculatory duct cells, epididymis, mammary epithelial cells, Merkel cells, and dermal fibroblasts. Furthermore, immunostaining for PGP9.5 has been shown in a wide variety of mesenchymal neoplasms as well. A mutation in PGP9.5 gene is believed to cause a form of Parkinson's disease.

### Research Areas

Neuroscience

### Known Applications & Suggested Dilutions

Western Blot (2-4ug/ml) | Immunohistochemistry (Formalin-fixed) (1-2ug/ml for 30 minutes at RT), (Staining of formalin-fixed tissues requires heating tissue sections in 10mM Tris with 1mM EDTA, pH 9.0, for 45 min at 95 °C followed by cooling at RT for 20 minutes), Optimal dilution for a specific application should be determined.

### Limitations and Warranty

This antibody is available for research use only and is not approved for use in diagnosis.

There are no warranties, expressed or implied, which extend beyond this description. Company is not liable for any personal injury or economic loss resulting from this product.

### Supplied As

200ug/ml of Ab purified from Bioreactor Concentrate by Protein A/G. Prepared in 10mM PBS with 0.05% BSA & 0.05% azide. Also available WITHOUT BSA & azide at 1.0mg/ml.

### Storage and Stability

Antibody with azide - store at 2 to 8 °C. Antibody without azide - store at -20 to -80 °C. Antibody is stable for 24 months. Non-hazardous. No MSDS required.