

TLE1 (Synovial Sarcoma Marker) Antibody

Mouse Monoclonal Antibody [Clone TLE1/2062]

Catalog No	Format	Size
7088-MSM2-P0	Purified Ab with BSA and Azide at 200ug/ml	20 ug
7088-MSM2-P1	Purified Ab with BSA and Azide at 200ug/ml	100 ug
7088-MSM2-P1ABX	Purified Ab WITHOUT BSA and Azide at 1.0mg/ml	100 ug

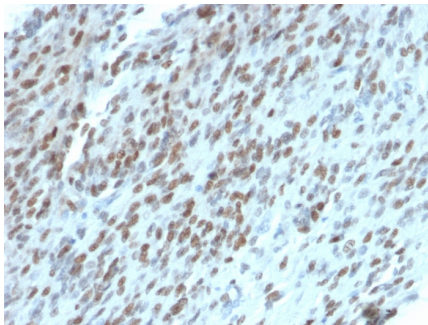
Applications	Tested Dillution	Note
Immunohistochemistry (IHC)	1-2ug/ml	30 min at RT. Staining of formalin-fixed tissues requires heating tissue sections in 10mM Tris with 1mM EDTA, pH 9.0, for 45 min at 95°C followed by cooling at RT for 20 minutes
Western Blot (WB)	2-4ug/ml	

Product Details

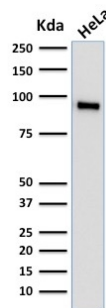
Clone	TLE1/2062
Gene Name	TLE1
Immunogen	Recombinant human TLE1 fragment (aa 175-338) (exact sequence is proprietary)
Host	Mouse
Clonality	Monoclonal
Isotype / Light Chain	IgG2a / Kappa
Mol. Weight of Antigen	83kDa
Cellular Localization	Nucleus
Species Reactivity	Human
Positive Control	HeLa, HepG2 or Jurkat cells. Endometrium Carcinoma or Sarcomas.

*Optimal dilution for a specific application should be determined.

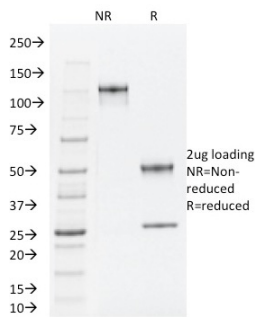
Product Images for TLE1 (Synovial Sarcoma Marker) Antibody



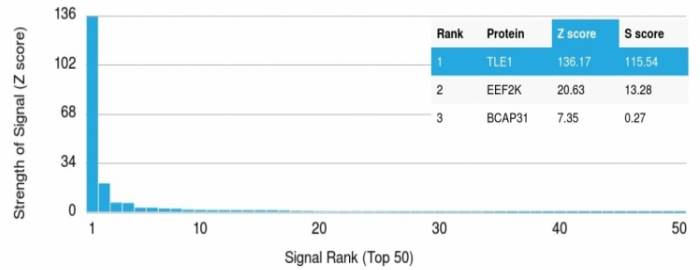
Formalin-fixed, paraffin-embedded human GIST stained with TLE1 Mouse Monoclonal Antibody (TLE1/2062).



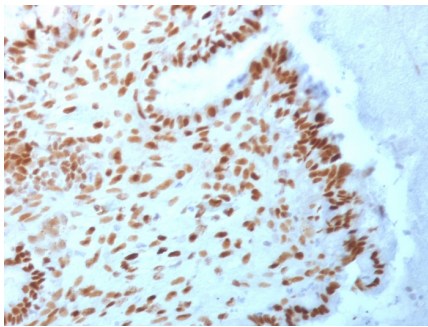
Western Blot Analysis of human HeLa cell lysate using TLE1 Mouse Monoclonal Antibody (TLE1/2062).



SDS-PAGE Analysis Purified TLE1 Mouse Monoclonal Antibody (TLE1/2062). Confirmation of Integrity and Purity of Antibody.



Analysis of Protein Array containing more than 19,000 full-length human proteins using TLE1 Mouse Monoclonal Antibody (TLE1/2062). Z- and S- Score: The Z-score represents the strength of a signal that a monoclonal antibody (MAb) (in combination with a fluorescently-tagged anti-IgG secondary antibody) produces when binding to a particular protein on the HuProt™ array. Z-scores are described in units of standard deviations (SD's) above the mean value of all signals generated on that array. If targets on HuProt™ are arranged in descending order of the Z-score, the S-score is the difference (also in units of SD's) between the Z-score. S-score therefore represents the relative target specificity of a MAb to its intended target. A MAb is considered to specific to its intended target, if the MAb has an S-score of at least 2.5. For example, if a MAb binds to protein X with a Z-score of 43 and to protein Y with a Z-score of 14, then the S-score for the binding of that MAb to protein X is equal to 29.



Formalin-fixed, paraffin-embedded human Endometrial Carcinoma stained with TLE1 Mouse Monoclonal Antibody (TLE1/2062).

Specificity & Comments

Key players in the Notch pathway are the TLE genes, which are human homologs of the *Drosophila* groucho gene. Groucho is a transcriptional repressor that plays a key role in neurogenesis, segmentation and sex determination. Transducin-like enhancer protein1 (TLE1) is a protein that is encoded by the TLE1 gene and is involved in control of hematopoiesis, neuronal, and terminal epithelial differentiation. Positive immunohistochemical nuclear staining with anti-TLE-1 has been shown to be a useful addition to an IHC panel when differentiating synovial sarcoma from other soft tissue malignancies.

Supplied As

200ug/ml of Ab Purified from Bioreactor Concentrate by Protein A/G. Prepared in 10mM PBS with 0.05% BSA & 0.05% azide. Also available WITHOUT BSA & azide at 1.0mg/ml.

Storage and Stability

Antibody with azide - store at 2 to 8°C. Antibody without azide - store at -20 to -80°C. Antibody is stable for 24 months. Non-hazardous. No MSDS required.

Research Areas

Cardiovascular, Signal Transduction

Limitations and Warranty

This antibody is available for research use only and is not approved for use in diagnosis. There are no warranties, expressed or implied, which extend beyond this description. Company is not liable for any personal injury or economic loss resulting from this product.