

## TIMP2 (Tissue Inhibitor of Metalloproteinase 2) Antibody

Mouse Monoclonal Antibody [Clone 3A4]

Catalog No	Format	Size
7077-MSM1-P0	Purified Ab with BSA and Azide at 200ug/ml	20 ug
7077-MSM1-P1	Purified Ab with BSA and Azide at 200ug/ml	100 ug
7077-MSM1-P1ABX	Purified Ab WITHOUT BSA and Azide at 1.0mg/ml	100 ug

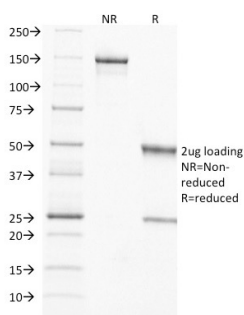
Applications	Tested Dillution	Note
Flow Cytometry (Flow)	1-2ug/million cells	
Immunofluorescence (IF)	1-3ug/ml	
Immunohistochemistry (IHC)	1-2ug/ml	30 min at RT. Staining of formalin-fixed tissues requires heating tissue sections in 10mM Tris with 1mM EDTA, pH 9.0, for 45 min at 95°C followed by cooling at RT for 20 minutes
Western Blot (WB)	2-4ug/ml	

### Product Details

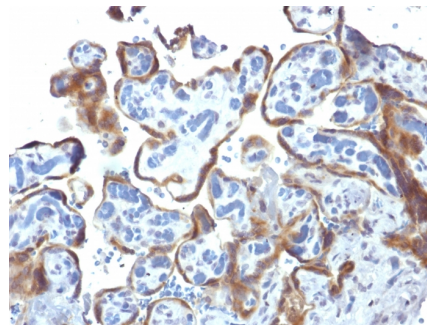
<b>Clone</b>	3A4
<b>Gene Name</b>	TIMP2
<b>Immunogen</b>	A synthetic peptide from the N-terminus of human TIMP2 protein (aa56-66) (DSGNDIYGNPI)
<b>Host</b>	Mouse
<b>Clonality</b>	Monoclonal
<b>Isotype / Light Chain</b>	IgG2a / Kappa
<b>Mol. Weight of Antigen</b>	21kDa
<b>Cellular Localization</b>	Secreted
<b>Species Reactivity</b>	Cow, Guinea Pig, Human, Mouse, Rabbit, Rat, Zebrafish
<b>Positive Control</b>	Colon, Endometrial, HeLa cells. Normal Placenta. Breast, Prostate or Ovarian Carcinoma.

\*Optimal dilution for a specific application should be determined.

### Product Images for TIMP2 (Tissue Inhibitor of Metalloproteinase 2) Antibody



SDS-PAGE Analysis of Purified TIMP2 Mouse Monoclonal Antibody (3A4). Confirmation of Purity and Integrity of Antibody.



Formalin-fixed, paraffin-embedded human Placenta stained with TIMP2 Mouse Monoclonal Antibody (3A4)

**Specificity & Comments**

It recognizes a protein of 21kDa, identified as tissue inhibitor of metalloproteinases-2 (TIMP-2). It is closely related to TIMP-1 and shows the highest binding affinity to both the latent (pro) and active forms of 72kDa Type IV collagenase (also known as MMP-2 or gelatinase A). It also has affinity for the active form of 92kDa Type IV collagenase (also known as MMP-9 or gelatinase B). TIMP-2 inhibits the proteolytic invasiveness of tumor cells and normal placental trophoblast cells.

---

**Limitations and Warranty**

This antibody is available for research use only and is not approved for use in diagnosis. There are no warranties, expressed or implied, which extend beyond this description. Company is not liable for any personal injury or economic loss resulting from this product.

---

**Supplied As**

200ug/ml of Ab Purified from Bioreactor Concentrate by Protein A/G. Prepared in 10mM PBS with 0.05% BSA & 0.05% azide. Also available WITHOUT BSA & azide at 1.0mg/ml.

---

**Storage and Stability**

Antibody with azide - store at 2 to 8°C. Antibody without azide - store at -20 to -80°C. Antibody is stable for 24 months. Non-hazardous. No MSDS required.

---

**Research Areas**

AKT Signaling, Angiogenesis, Cardiovascular, Immunology

---