

## Recombinant Synaptophysin (Neuroendocrine Marker) Antibody

Rabbit Monoclonal Antibody [Clone SYP/4503R]

Catalog No	Format	Size
6855-RBM3-P0	Purified Ab with BSA and Azide at 200ug/ml	20 ug
6855-RBM3-P1	Purified Ab with BSA and Azide at 200ug/ml	100 ug
6855-RBM3-P1ABX	Purified Ab WITHOUT BSA or Azide at 1.0mg/ml	100 ug

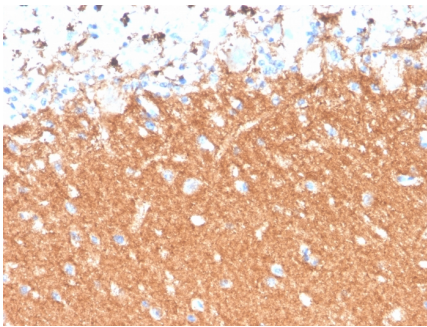
Applications	Tested Dillution	Note
Immunohistochemistry (IHC)	1-2ug/ml	30 min at RT. Staining of formalin-fixed tissues requires heating tissue sections in 10mM Tris with 1mM EDTA, pH 9.0, for 45 min at 95°C followed by cooling at RT for 20 minutes
Western Blot (WB)	2-4ug/ml	

### Product Details

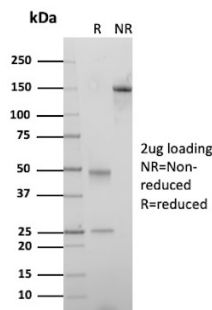
<b>Clone</b>	SYP/4503R
<b>Immunogen</b>	Recombinant fragment (around aa224-313) of the human Synaptophysin protein (exact sequence is proprietary)
<b>Host</b>	Rabbit
<b>Clonality</b>	Monoclonal
<b>Isotype / Light Chain</b>	IgG / Kappa
<b>Mol. Weight of Antigen</b>	33.84kDa
<b>Cellular Localization</b>	Cytoplasmic vesicle, Secretory vesicle, Synapse, Synaptic vesicle membrane, Synaptosome
<b>Species Reactivity</b>	Human
<b>Positive Control</b>	Cerebellum or Pheochromocytoma., HeLa or Y79 cells. Brain Human pancreas, HePG2

\*Optimal dilution for a specific application should be determined.

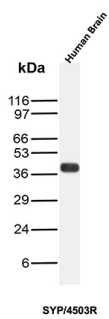
### Product Images for Recombinant Synaptophysin (Neuroendocrine Marker) Antibody



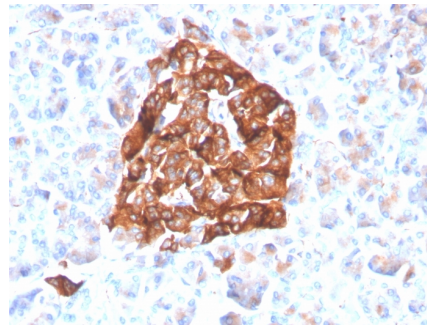
Formalin-fixed, paraffin-embedded human brain stained with Synaptophysin Recombinant Rabbit Monoclonal Antibody (SYP/4503R).



SDS-PAGE Analysis of Purified Synaptophysin Recombinant Rabbit Monoclonal Antibody (SYP/4503R). Confirmation of Purity and Integrity of Antibody.



Western Blot Analysis of Human Brain tissue lysate using Synaptophysin Recombinant Rabbit Monoclonal Antibody (SYP/4503R).



Formalin-fixed, paraffin-embedded human pancreas stained with Synaptophysin Recombinant Rabbit Monoclonal Antibody (SYP/4503R).

### Specificity & Comments

This recombinant rabbit monoclonal antibody recognizes a protein of 38kDa that is identified as synaptophysin. It is an N-glycosylated integral membrane protein found in neurons and endocrine cells. Synaptophysin contains four transmembrane domains and may function as a gap junction-like channel. This antibody identifies normal neuroendocrine cells and neuroendocrine neoplasms. Diffuse, finely granular, cytoplasmic staining is observed, which probably correlates with the distribution of the antigen within neurosecretory vesicles. Synaptophysin is an independent, broad-range marker of neural and neuroendocrine differentiation.

### Limitations and Warranty

This antibody is available for research use only and is not approved for use in diagnosis. There are no warranties, expressed or implied, which extend beyond this description. Company is not liable for any personal injury or economic loss resulting from this product.

### Supplied As

200ug/ml of Ab produced in a mammalian-based expression system. Prepared in 10mM PBS with 0.05% BSA & 0.05% azide. Also available WITHOUT BSA & azide at 1.0mg/ml.

### Storage and Stability

Antibody with azide - store at 2 to 8 °C. Antibody without azide - store at -20 to -80 °C. Antibody is stable for 24 months. Non-hazardous. No MSDS required.